

A kaleidoscope of photosynthetic antenna proteins and their emerging roles

Rameez Arshad ^{1,2} Francesco Saccon ³ Pushan Bag ⁴ Avratanu Biswas ⁵ Claudio Calvaruso ⁶ Ahmad Farhan Bhatti ⁷ Steffen Grebe ⁸ Vincenzo Mascoli ⁵ Moontaha Mahbub ^{3,9} Fernando Muzzopappa ¹⁰ Alexandros Polyzois ¹¹ Christo Schiphorst ¹² Mirella Sorrentino ^{13,14} Simona Streckaitė ¹⁰ Herbert van Amerongen ⁷ Eva-Mari Aro ⁸ Roberto Bassi ¹² Egbert J. Boekema ² Roberta Croce ⁵ Jan Dekker ⁵ Rienk van Grondelle,⁵ Stefan Jansson ⁴ Diana Kirilovsky ¹⁰ Roman Kouril,¹ Sylvie Michel ¹¹ Conrad W. Mullineaux ³ Klára Panzarová ¹³ Bruno Robert,¹⁰ Alexander V. Ruban ³ Ivo van Stokkum ⁵ Emilie Wientjes ⁷ and Claudia Büchel ^{6,*†}

- 1 Department of Biophysics, Centre of the Region Haná for Biotechnological and Agricultural Research, Faculty of Science, Palacký University, Olomouc 783 71, Czech Republic
- 2 Electron Microscopy Group, Groningen Biomolecular Sciences and Biotechnology Institute, University of Groningen, Groningen 9747 AG, The Netherlands
- 3 School of Biological and Behavioural Sciences, Queen Mary University of London, London, UK
- 4 Department of Plant Physiology, Umeå Plant Science Centre, Umeå University, Umeå 901 87, Sweden
- 5 Department of Physics and Astronomy and LaserLab, Faculty of Science, Vrije Universiteit Amsterdam, Amsterdam 1081 HV, The Netherlands
- 6 Institute for Molecular Biosciences, Goethe University of Frankfurt, Frankfurt 60438, Germany
- 7 Laboratory of Biophysics, Wageningen University, Wageningen, the Netherlands
- 8 Department of Life Technologies, MolecularPlant Biology, University of Turku, Turku FI-20520, Finland
- 9 Department of Botany, Jagannath University, Dhaka 1100, Bangladesh
- 10 Institute for Integrative Biology of the Cell (I2BC), CEA, CNRS, Université Paris-Sud, Université Paris-Saclay, Gif sur Yvette 1198, France
- 11 Université de Paris, Faculté de Pharmacie de Paris, CiTCoM UMR 8038 CNRS, Paris 75006, France
- 12 Dipartimento di Biotecnologie, Università di Verona, Verona, Italy
- 13 Photon Systems Instruments, spol. s.r.o., Drásov, Czech Republic
- 14 Department of Agricultural Sciences, University of Naples Federico II, Naples 80138, Italy

*Author for correspondence: C.Buechel@bio.uni-frankfurt.de

These authors contributed equally (R.A. and F.S.).

†Senior author

R.A., F.S., and C.B. conceived the structure and content of the manuscript. C.S., F.S., and S.S. prepared all figures. All authors contributed to the writing. C.B. agrees to serve as the author responsible for contact and ensures communication.

The author responsible for distribution of materials integral to the findings presented in this article in accordance with the policy described in the Instructions for Authors (<https://academic.oup.com/plphys/pages/general-instructions>) is Claudia Büchel (C.Buechel@bio.uni-frankfurt.de).

Abstract

Photosynthetic light-harvesting antennae are pigment-binding proteins that perform one of the most fundamental tasks on Earth, capturing light and transferring energy that enables life in our biosphere. Adaptation to different light environments led to the evolution of an astonishing diversity of light-harvesting systems. At the same time, several strategies have been developed to optimize the light energy input into photosynthetic membranes in response to fluctuating conditions. The basic feature of these prompt responses is the dynamic nature of antenna complexes, whose function readily adapts

to the light available. High-resolution microscopy and spectroscopic studies on membrane dynamics demonstrate the crosstalk between antennae and other thylakoid membrane components. With the increased understanding of light-harvesting mechanisms and their regulation, efforts are focusing on the development of sustainable processes for effective conversion of sunlight into functional bio-products. The major challenge in this approach lies in the application of fundamental discoveries in light-harvesting systems for the improvement of plant or algal photosynthesis. Here, we underline some of the latest fundamental discoveries on the molecular mechanisms and regulation of light harvesting that can potentially be exploited for the optimization of photosynthesis.

Introduction

Oxygenic photosynthesis is one of the most important biosynthetic pathways on Earth, sustained solely by solar energy. It is responsible for all oxygen production and for a global net primary production of about 1.05×10^{17} grams of fixed carbon per annum (Field et al., 1998). The primary processes involve the harvesting of solar energy, its conversion into chemical energy, and protection of the organism against photodamage. These processes lead to the synthesis of ATP and NADPH, which are used for assimilation of CO_2 . The primary reactions take place in the thylakoid membranes in cyanobacterial cells and the chloroplasts of eukaryotic photosynthetic organisms like plants and algae. The photosystems (PSs), responsible for photochemistry, are well conserved between the different organisms, whereas many different light-harvesting systems have evolved (Büchel, 2015; Croce et al., 2018). Membrane-extrinsic antennae like the phycobilisomes (PBSs) of cyanobacteria and red algae and the membrane-intrinsic proteins of the light-harvesting complex (Lhc) family in plants serve the same purpose: to efficiently harvest solar energy and transfer it to the PS reaction centers (RCs), where charge separation occurs in the specialized chlorophylls (Chls), fueling photosynthetic electron transport. To this end, the antenna proteins are arranged together with the PS cores in the so-called supercomplexes, enabling a high efficiency of transfer, but also its regulation.

The differences in antenna systems are accompanied by diversity in thylakoid membrane structure, ranging from almost homogeneous, parallel membranes, as in cyanobacteria, to the strong segregation into grana and stroma lamellae visible in vascular plants. Green algae also possess grana, although their grana stacks usually contain fewer membranes. In both green algae and plants, grana and stroma differentiation is accompanied by a segregation of the PSs (Anderson, 1986; Wietrzynski et al., 2020). PSII in a functional state is found almost exclusively in the grana and PSI in the stroma lamellae. Diatoms, as an example from the huge group of stramenopile algae, have thylakoids associated into bands of six membranes each. In this case, only enrichment of PSI in the outer membranes and of PSII in the inner four membranes of such a band could be demonstrated (Flori et al., 2017), but not such complete segregation as in vascular plants and green algae.

Advances

- Major advances have been obtained in identifying the site and mechanism of NPQ, including disentangling the contribution of minor and major antennae in plants, identifying a Chl-carotenoid dissipative energy transfer pathway, and describing the mechanism of OCP-mediated quenching in cyanobacteria.
- The structural organization of PSs in plants and algae has been resolved, enabling detailed studies on light harvesting and photoprotection in the supercomplexes.
- The mechanism of extreme light and temperature tolerance in evergreen conifers has been elucidated.
- Data have been obtained regarding the organization of supercomplexes in the thylakoid membranes and their biogenesis.

In order to optimize the use of the absorbed solar energy and at the same time to prevent damage to the organism under changing light conditions, all processes have to be tightly regulated. On the level of the primary reactions, the competition between light harvesting and photoprotection is of major importance: while under low-light conditions, plants and algae need to optimize energy harvesting, high-light conditions demand the harmless dissipation of excess energy. In vivo, changes in the incident light regime occur rather fast and frequently, enhancing the need for fast regulation. Eventually, the competition between light harvesting and photoprotection limits the yield of assimilation and by that the yield of products for human use.

Plants have been used by mankind mainly for nutrition, but also for medical purposes, and breeding has led to plant lines of considerable agronomical value. Lately, plants as well as algae have also come into use for biofuel production (Ruiz et al., 2016). For all purposes, high biomass or product yields are mandatory. Since the interplay between light harvesting and photoprotection is one of the limiting factors (Slattery et al., 2018), a thorough understanding of the regulation of light reactions is crucial to improve the organism's ability to produce biomass for future biotechnological

approaches and sustainable agriculture. This review thus first introduces the different photosynthetic systems of the diverse groups of organisms, including cyanobacteria, plants, green algae, and diatoms. It then deals with recent advances in understanding excitation energy transfer, photoprotection, and the plasticity of the thylakoid membrane.

Natural diversity of PS supercomplexes

PSII

PSs are multi-subunit assemblies of light-harvesting antenna complexes and RC proteins. While the structure of reaction centers is conserved in photosynthetic organisms (Umena et al., 2011; Su et al., 2017; Pi et al., 2019; Sheng et al., 2019), the structure of antennae, the identity of bound pigments and, consequently their function in light-harvesting processes vary drastically. In cyanobacteria and red algae, the PBSs anchored to the cytoplasmic side of the thylakoid membranes serve as the major Lhc. PBSs are composed of water-soluble assemblies of open-chain tetrapyrrole chromophore-bearing phycobiliproteins and linker proteins that efficiently absorb light in a broad spectral range between 550 and 670 nm. Commonly, PBSs are hemidiscoidal or hemiellipsoidal structures, which consist of two key structural components: (1) a core substructure, which can be bicylindrical as in *Synechococcus* sp., but which is more typically tricylindrical as in *Synechocystis* sp. and (2) peripheral rods, protruding out from the core (Glauer et al., 1992).

The rods can be composed of various pigmented proteins: C-phycoerythrin ($\lambda_{\max} = 620$ nm), phycoerythrin ($\lambda_{\max} = 565$ nm), or phycoerythrocyanin ($\lambda_{\max} = 575$ nm). The cores are instead built of a variable number of allophycocyanin (APC, $\lambda_{\max} = 650$ – 670 nm) units (Figure 1). There are, however, large variations in the PBS organization and composition and deviations from this fundamental design depending on the species and growth conditions (Adir, 2005). The pigment–protein complexes of PBSs are organized as an energetic funnel, transmitting the absorbed energy via the rods to the core and ultimately to the RC) of the PSs with a very high quantum efficiency (Scott et al., 2006; Adir et al., 2020). Great progress has been made in recent years to solve the structure of PBSs at high resolution and reveal their docking site to PSs as well as possible regulatory sites (Zhang et al., 2017; Ma et al., 2020; Liu et al., 2021; Figure 1). Both cryo-electron microscopy (EM) structures from the Sui group, obtained from the red algae *Porphyridium purpureum* and *Griffithsia pacifica*, revealed the huge size of the PBSs and a convoluted rod architecture. In *P. purpureum*, >1,500 chromophores are bound, of which the majority are phycoerythrobilins (Ma et al., 2020).

Compartmental modeling analysis of picosecond time-resolved fluorescence studies revealed that, in intact cyanobacterial cells, the excitation energy from PBS can be rapidly distributed to the PSs (Tian et al., 2011; Acuña et al., 2018). The varying architecture and the composition of PBSs among cyanobacterial species seem to hardly affect the

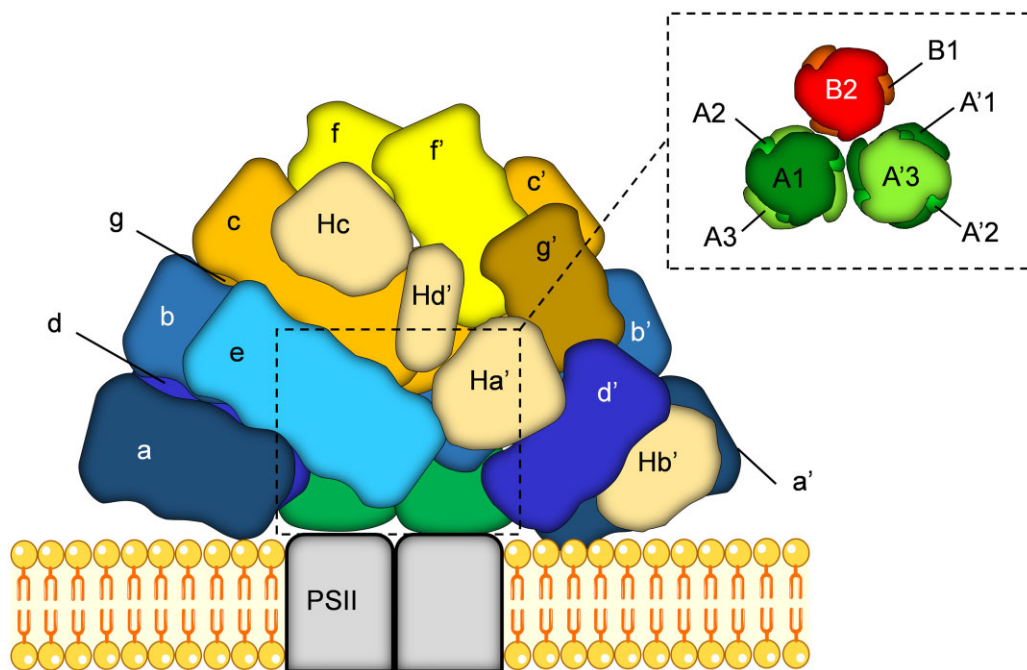


Figure 1 Organization of hemiellipsoidal PBS assemblies in the red alga *P. purpureum* (PDB entry: 6KGX). This is, at present, the highest resolution structure of a PBS deposited. Lowercase characters (a–g, a'–g') mark the 14 peripheral rods, formed variably of phycoerythrin and phycocyanin complexes. Additional phycoerythrin hexamers are resolved, namely Ha', Hb', Hc, and Hd' (their counterparts are not visible in this view). Minor individual phycoerythrin monomers and β subunits are omitted for clarity. The inset shows the structure of the PBS core, formed of one top cylinder (B) composed of 2 APC trimers (B1 and B2) and two basal cylinders. Each basal cylinder contains three APC trimers, namely, discs A1–3 and A'1–3. PSII, Photosystem II.

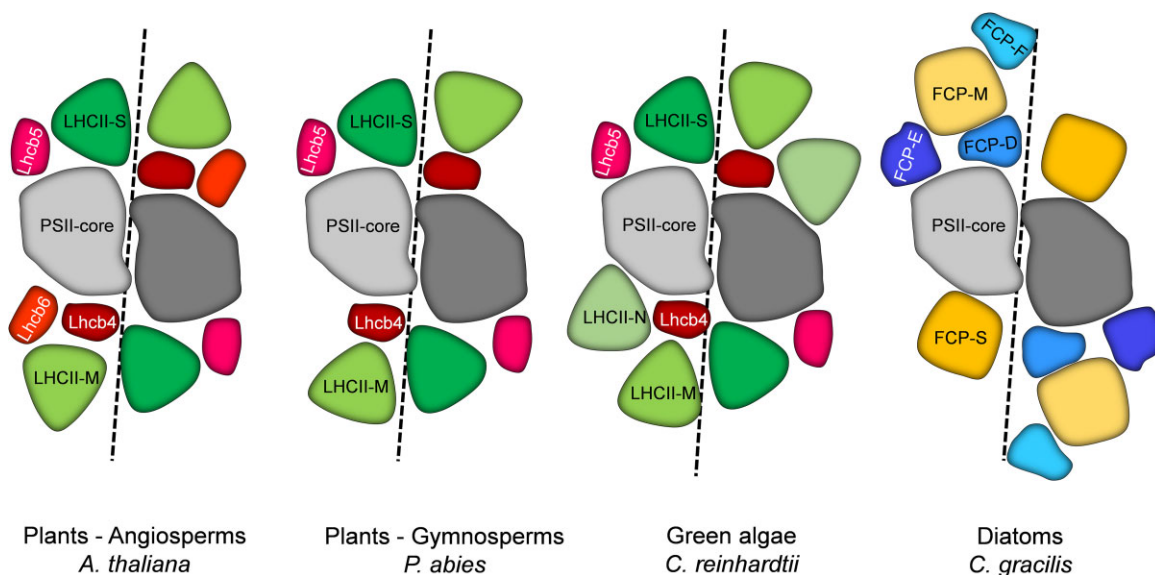


Figure 2 Organization of PSII supercomplexes in vascular plants, green algae and diatoms. The scheme is based on current structural data available (PDB entries: 5MDX, *A. thaliana*; 6KAF, *C. reinhardtii*; 6JLU, *C. gracilis*). The putative structure of *P. abies* PSII is shown as well [Kouřil et al., 2016]. PSII, photosystem II; Lhc, light harvesting complex; FCP, fucoxanthin chlorophyll protein.

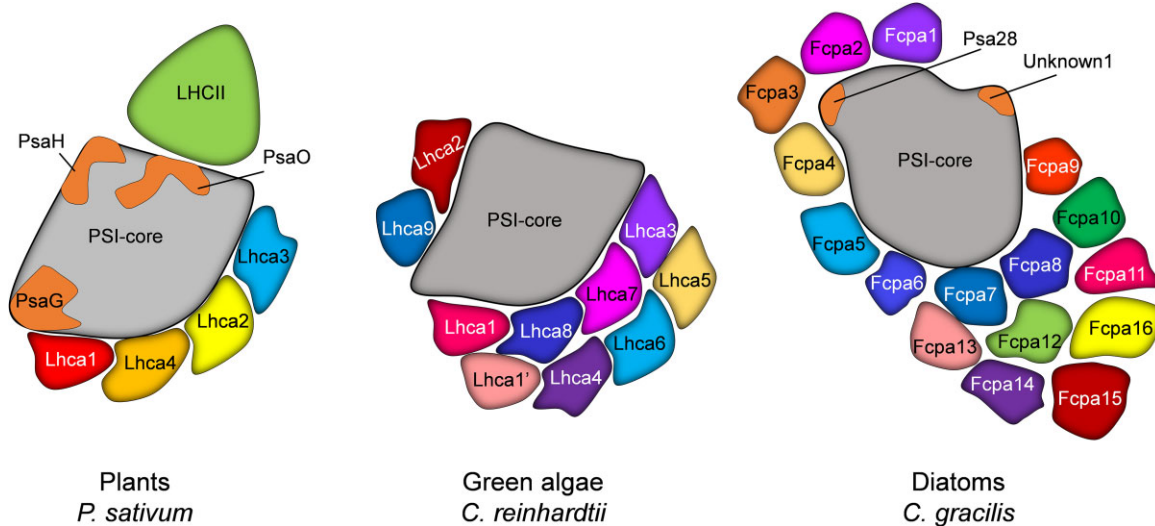


Figure 3 Organization of the PSI antenna system in vascular plants, green algae, and diatoms. The scheme is based on current structural data available (PDB entries: 5L8R, *Pisum sativum*; 6J06, *C. reinhardtii*; 6L4U, *C. gracilis*). PSI, photosystem I; Lhc, light harvesting complex; Fcp, fucoxanthin chlorophyll protein; Psa, subunit of PSI.

energy funneling from the PBSs to the PSs (Tian et al., 2011; Acuña et al., 2018; Akhtar et al., 2020; Biswas et al., 2020).

In contrast to the bulky structure of PBSs in cyanobacteria, the Lhcs of plants and green algae binding Chla, Chlb, and carotenoids are compact transmembrane proteins almost completely embedded in the thylakoid membrane (Figures 2 and 3). They are encoded by the multigenic Lhc family and can either serve the PSII (Lhcb) or the PSI cores (Lhca; Pan et al., 2020). In vascular plants, PSII binds the monomeric antenna proteins Lhcb4 (CP29), Lhcb5 (CP26), and Lhcb6 (CP24) and the trimeric LHCII complexes (encoded by combinations of Lhcb1-3; Jansson et al., 1997; Jansson, 1999). However, Lhcb6 is not present in green algae

and has been lost during evolution in some subgroups of gymnosperms (Kouřil et al., 2016; Figure 2). The monomeric antenna proteins are essential for the proper energy transfer from LHCII to the PSII core (Caffarri et al., 2011; Dall'Osto et al., 2014). Especially, Lhcb4 (CP29) has been recently shown to play a pivotal role as an energy “channel” by harboring two low energy Chla sites, one on the side of CP47 (Chlorophyll Protein 47, a PSII core antenna, together with CP43) and one on the side of LHCII (Dall'Osto et al., 2020; Mascoli et al., 2020b). The trimeric antenna complexes of PSII can associate with the core complex differently; S trimers bind strongly, M trimers bind moderately and L trimers are loosely bound to PSII (Dekker and Boekema,

2005; Kouřil et al., 2018). S trimers are formed by different ratios of Lhcb1 and Lhcb2 proteins, and binding with the PSII core complex is supported by Lhcb4 and Lhcb5 monomers. M trimers contain a single copy of Lhcb3 and two copies of Lhcb1/2, and associate with the PSII core via Lhcb6 and Lhcb4 proteins (De Bianchi et al., 2008; Caffarri et al., 2004; Van Bezouwen et al., 2017; Su et al., 2017). In vascular plants, a PSII C₂S₂M₂ supercomplex is formed by a dimeric core complex which binds two copies of S and M trimers each (Su et al., 2017; Van Bezouwen et al., 2017). In green algae, which lack the monomeric antenna protein Lhcb6, an additional N (naked) trimer is bound directly to the core complex without the involvement of this monomeric antenna protein, forming a C₂S₂M₂N₂ supercomplex (Figure 2; Drop et al., 2014; Shen et al., 2019; Sheng et al., 2019).

Fucoxanthin Chl-binding proteins (FCPs) are the antenna complexes in diatoms. They belong to the same protein family as LHCI and share several conserved structural and functional traits with their plant relatives, although they bind different chromophores (Premvardhan et al., 2010; Röding et al., 2018; Croce and van Amerongen, 2020). Recently, the structure of an FCP from *Phaeodactylum tricornutum* was solved, showing a dimeric complex. FCP binds 7 Chla, 2 Chlc, 7 fucoxanthin, and 1 diadinoxanthin per monomer, bringing the Car/Chl ratio close to one, much higher than in green algae or plants (Wang et al., 2021). Besides these dimers, also trimeric FCPs were found in *P. tricornutum* (Gundermann et al., 2013; Lepetit et al., 2017). In other species, *Cyclotella meneghiniana* and *Thalassiosira pseudonana*, trimeric FCP complexes prevailed (Röding et al., 2018; Arshad et al., 2021). Here, FCP complexes of higher oligomeric state (Büchel, 2003), loosely bound to the PSs but highly abundant in the thylakoid membrane, are present as well (Calvaruso et al., 2020). The structure of the PSII-FCP supercomplexes revealed a unique organization of the Lhcs, with three monomeric FCPs in locations different from the minor antenna of plants (Nagao et al., 2019; Pi et al., 2019; Arshad et al., 2021), and, depending on the species, tetrameric (*Chaetoceros gracilis*) or trimeric FCPs (*T. pseudonana*).

PS I

The core of the PSI reaction center (Figure 3) is composed of the subunits PsaA and PsaB that also act as inner antenna similar to CP43 and CP47 in PSII (Jordan et al., 2001; Cardona, 2017). A large contribution to light harvesting in PSI comes directly from the pigments bound to the core, 96 Chls *a* and 22 carotenoids (Jordan et al., 2001). Nevertheless, in plants, the core complex of PSI binds four additional monomeric antenna proteins referred to as LHCI (Lhca1–4), which form a belt on one side of the PSI core (Ben-Shem et al., 2003; Mazor et al., 2017). LHCI in plants bind in total of 45 Chls *a*, 12 Chls *b*, and 13 carotenoids, increasing the absorption cross-section of the PSI core by ~60% (Qin et al., 2015). Lhca3 and Lhca4 bind Chls that absorb at wavelengths >700 nm, which is substantially lower in energy than most Chls of the core (Croce and van Amerongen,

2020). This implies an uphill energy transfer between these complexes and the core energy trap, which, for this reason, is slower than for Lhca1 and Lhca2. Despite its large size and the peculiar red Chls in LHCI, the PSI–LHCI complex is extremely fast and efficient, and performs photochemistry with a quantum efficiency of almost 98%, making PSI the most efficient photochemical energy converter (Nelson, 2009; Croce and van Amerongen, 2013; Le Quiniou et al., 2015).

PSI in the green alga *Chlamydomonas reinhardtii* is larger than that in plants and contains two additional Lhca subunits on the PsaH/PsaG side and four Lhca subunits bind as an additional moon-shaped arc on top of the inner belt found in plants (Qin et al., 2019). The additional antenna proteins bind in total over 65 extra Chls, increasing the absorption cross-section by 41% in comparison to that of plants, without affecting the excitation energy transfer and trapping time (Le Quiniou et al., 2015). This is possible because the Chl red forms in green algae have higher energy levels in comparison with those in plants, leading to a similar average overall trapping time in both organisms (Le Quiniou et al., 2015). Recently, it was shown that in a colony-forming green alga, *Botryococcus braunii*, PSI can bind Lhca subunits at all known binding positions as seen in green algae and vascular plants, which in turn maximizes the antenna size while maintaining a high energy transfer efficiency (van den Berg et al., 2020).

The PSI antenna of diatoms is even larger than that of green algae, although the amount of antenna complexes bound seems to be dependent on species and/or culture conditions (Figure 3). Equivalent to plant LHCI, the FCPI complexes connected to the PSI core are in monomeric form. FCPI are arranged in several layers around PSI, with up to 24 antenna subunits present (Nagao et al., 2020; Xu et al., 2020; Arshad et al., 2021). In the PSI structure reported in (Nagao et al., 2020), the number of Chls bound to the full FCPI complement is 128, making its light-harvesting cross-section effectively larger than the PSI core. In diatoms, a large antenna system and binding of unique pigments are necessary for efficient light harvesting and energy dissipation, which ultimately assures the success of diatoms in the aqueous environment.

Regulation of energy transfer and trapping in the photosynthetic membrane

Adaptations to excessive sunlight

The adaptability of photosynthetic organisms to diverse and changeable environmental conditions derives from intricate molecular mechanisms to regulate photosynthesis. Often, sunlight intensity exceeds the capacity of the photosynthetic machinery and the unused, potentially harmful excitation energy enhances the probability of the generation of reactive oxygen species. Nonphotochemical quenching (NPQ) ensures a fast control of the amount of light energy conveyed to reaction centers and catalyzes the dissipation of the energy absorbed in excess (Demmig-Adams et al., 2014).

NPQ is a process of dynamic adaptation to light intensity, in most cases strongly reliant on feedback cues generated by an overly active photosynthetic machinery. The major component of NPQ in plants is indeed called energy-dependent quenching (qE), since it depends on the increase of thylakoid transmembrane ΔpH , driven by photosynthetic electron transport (Ruban, 2016). It is the quickest, promptly reversible component of NPQ and, in plants, it relies on the activation of a small transmembrane protein called PSII subunit S (PsbS), while being enhanced by the activity of the xanthophyll cycle enzymes, which reversibly convert violaxanthin to zeaxanthin during high-light exposure. Ultimately, these changes lead to the formation of dissipative interactions within the pigment network, shortening the excitation lifetime. This section aims at giving a brief overview of the topic and its most recent developments, but is not exhaustive. Readers are referred to the reviews of (Bennett et al., 2019; Ruban and Wilson, 2020; Bassi and Dall'Osto, 2021) for further information.

Many aspects of the molecular mechanism of NPQ remain obscure, due to the experimental challenges posed by the protein-congested, highly plastic thylakoid membrane. In particular, the site and the mechanism of qE in plants have been long-standing open questions.

A breakthrough in pinpointing the qE site was attained with the creation of Arabidopsis (*Arabidopsis thaliana*) mutants lacking either all minor antennae ("No minor" mutants [NoMs]; Dall'Osto et al., 2014, 2017) or major LHCII complexes (Nicol et al., 2019; Nicol and Croce, 2021). The analysis of qE in these mutants unequivocally revealed the importance of major LHCII in the process of energy dissipation: while the absence of minor antennae causes changes in the kinetics of the qE onset (Dall'Osto et al., 2017), the absence of LHCII causes a major decrease of the extent of reversible quenching that reaches only up to 40% of the wild-type value (Nicol et al., 2019). In NoM, the noticeable transient NPQ relaxation occurring shortly after illumination was attributed to the absence of minor antennae, since this phenotype was also observed in koCP29 mutants (De Bianchi et al., 2008; Dall'Osto et al., 2017), and wild-type NPQ kinetics were re-established upon complementation with the CP29 wild-type sequence (Guardini et al., 2020; Bassi and Dall'Osto, 2021). By complementing koCP29 with site-directed CP29 mutant sequences on Chl-binding sites, the quenching ability was assigned to specific domains in CP29 (Guardini et al., 2020). However, ΔpH and electron transport reactions are impaired in the absence of minor antennae (De Bianchi et al., 2008; Townsend et al., 2018). A spectroscopic examination of the NoM mutant suggested that a smaller ΔpH extent, and consequently an impaired low-pH-dependent accumulation of zeaxanthin, rather than the lack of specific quenching sites in minor antennae, are the causes of the transient NPQ relaxation in the NoM mutant (Townsend et al., 2018). Saccon et al. (2020c) treated the NoM mutant with the chloroplast protein synthesis inhibitor lincomycin, producing plants lacking all minor

antennae and most of the reaction center proteins. Provided that zeaxanthin is present, qE in these plants was shown to reach the same amplitudes as in wild-type. This model offered insights into the zeaxanthin- and PsbS-mediated regulation of the LHCII function, highlighting the allosteric nature of these factors. Both components modulate qE sensitivity to ΔpH , shifting it to smaller values and thereby offering plants a dynamic control of qE based on metabolic and environmental cues. LHCII, PsbS, and ΔpH are clearly the definers of qE in plants (Pawlak et al., 2020; Saccon et al., 2020c; Nicol and Croce, 2021). How much the minor antennae also contribute to quenching is still being argued (Townsend et al., 2018; Guardini et al., 2020; Bassi and Dall'Osto, 2021). So far, a mutant entirely lacking Lhcb1, Lhcb2, and Lhcb3 polypeptides has not been reported (Andersson et al., 2003; Nicol et al., 2019), which would help to quantify their contribution during qE. Many aspects of the role of PsbS during qE remain to be understood, despite recent advances. In vitro and in silico works have shown that specific luminal residues of the protein are involved in sensing pH (Li et al., 2004; Liguori et al., 2019; Krishnan-Schmieden et al., 2021). Since PsbS does not stably bind pigments and is therefore unlikely to be a site of quenching itself, its action could be to transduce lumen acidification to the bulk of LHCII, either by direct binding (Wilk et al., 2013; Correa-Galvis et al., 2016; Sacharz et al., 2017), or by transiently modifying the lipid environment of LHCII (Daskalakis et al., 2019).

The photoprotective role of Lhcs relies on their ability to switch between a long-lived state functional for light-harvesting and a short-lived (quenched) state that dissipates the absorbed energy as heat (Moya et al., 2001). The molecular mechanism of quenching and the nature of the photoprotective switch, however, remain hard to disentangle, due to the intrinsic nonfluorescent and short-lived character of the quencher, as well as the occurrence of experimental artifacts (Van Oort et al., 2018). This challenge was faced by investigating the quenching mechanism in monomeric detergent-solubilized CP29 (Mascoli et al., 2019). Taking advantage of a substantial subpopulation of strongly quenched complexes and applying a target kinetic model of the transient absorption (TA) data, the spectroscopic signature associated with the quenching mechanism was extracted and assigned to excitation energy transfer from Chls to a dark state of lutein 1, similarly to earlier results obtained on aggregated LHCII trimers (Ruban et al., 2007).

These findings open up two further questions: is the quenching mechanism identified in solubilized LHC also functional in the thylakoid membrane? And if so, how are the light-harvesting and quenched states regulated by changes of the membrane environment? En route to answering these questions, a recent study used TA measurements to address the quenched conformation of LHCII trimers immobilized in polyacrylamide gels to prevent clustering (Saccon et al., 2020a, 2020b). Similar to what was found in CP29 monomers, the signature of a carotenoid

excited state, linked to the quenching of Chl singlet excited states, was detected. Consistent with this, a study based on time-resolved fluorescence experiments and advanced kinetic modeling led to the conclusion that the same quenching mechanism observed in monomeric CP29 is also active in CP29 oligomers in vitro (Mascoli et al., 2020a). Both studies also highlighted the importance of the membrane/protein environment in altering the equilibrium between quenched and unquenched LHC conformations. In line with this, a 2D spectroscopy approach on LHCI embedded in nanodisks showed a specific fine-tuning of pigment interactions in the membrane environment (Son et al., 2020a).

Finally, the role of zeaxanthin as an energy quencher during NPQ is still unclear. Recent reports of TA performed on thylakoid membranes suggest zeaxanthin may be involved as an energy quencher and contribute to energy dissipation with different mechanisms (Park et al., 2017, 2018; Bennett et al., 2019). In particular, the signature of a zeaxanthin radical cation was related to the formation of NPQ in vivo and consequently, a dissipative mechanism involving electron transfer to zeaxanthin has been proposed, based on the observation that the amplitude of NPQ in the *NoM npq1* mutant, lacking zeaxanthin, is similar to *NoM npq4*, lacking PsbS (Holt et al., 2005; Ahn et al., 2008; Dall'Osto et al., 2017; Park et al., 2017). The importance of this mechanism during NPQ is still under debate since some reports have shown that quenching can occur to a large extent even in the absence of the carotenoid (Li et al., 2009; Johnson et al., 2012; Saccon et al., 2020a; Nicol and Croce, 2021). LHCI function in vitro is hardly affected when zeaxanthin is bound (Xu et al., 2015; Tutkus et al., 2019; Son et al., 2020b), which may suggest a more indirect role for zeaxanthin in the thylakoid membrane (Havaux, 1998; Ruban and Johnson, 2010).

NPQ strategies have been diversified during evolution of photosynthetic lineages (Goss and Lepetit, 2015). While cyanobacteria contain a different antenna system, the PBS, photoprotection is also achieved by switching the antenna from a light harvesting to a quenched state. However, the underlying mechanism is remarkably different. The orange carotenoid protein (OCP) is a carotenoid-binding protein that can sense light intensity, thereby undergoing activation through a conformational change that occurs more often when blue illumination is increased in intensity (reviewed in Kerfeld et al., 2017 and Muzzopappa and Kirilovsky, 2020). In the activated form, the OCP binds to the PBS core, between the APC trimers (Harris et al., 2016) inducing the energy dissipation at the level of APC660 (Rakhimberdieva et al., 2010; Tian et al., 2011). However, the exact mechanism underlying this quenching and the role of the carotenoid of the OCP are still open questions. Recent works have focused on the diversity of OCP proteins. OCPs can be clustered in three subfamilies with different regulation features. For example, the canonical OCP1 is deactivated through interaction with another protein, named Fluorescence Recovery Protein (reviewed in Slonimskiy et al., 2020), while this

additional regulation is not required for the OCP2 and OCPX (Bao et al., 2017; Muzzopappa et al., 2019). In addition, some cyanobacteria contain proteins coding for homologs of the OCP domains, the C-terminal domain homolog (CTDH), and the helical carotenoid protein (HCP; López-Igual et al., 2016; Melnicki et al., 2016). Although the in vivo role of these proteins is unknown, based on in vitro results it has been suggested that both could quench single oxygen, HCPs could also dissipate excess energy of PBS, and CTDH could be carotenoid carriers that ensure the proper carotenoid loading into HCPs (López-Igual et al., 2016; Muzzopappa et al., 2017; Harris et al., 2018).

Several proteins of the LHC superfamily acquired during evolution an exclusive role in photoprotective processes (Büchel, 2015; Giovagnetti and Ruban, 2018). Besides the already mentioned PsbS and OCP, present in vascular plants and cyanobacteria respectively, LHC stress-related (LHCSR) 1 and LHCSR3 protein complexes possess a prominent role during NPQ in the green algal lineage (Peers et al., 2009). Similar to PsbS, LHCSR proteins are able to sense luminal acidification and trigger the quenching response (Bonente et al., 2011; Liguori et al., 2013; Dinc et al., 2016; Tian et al., 2019). However, while PsbS is expressed constitutively in the thylakoids, LHCSRs expression is initiated upon illumination (Allorent et al., 2013; Polukhina et al., 2016). Moreover, while PsbS is unlikely to stably bind pigments (Dominici et al., 2002; Fan et al., 2015), several Chl and carotenoid molecules bind to LHCSRs, which have been proposed to be the site of NPQ (Bonente et al., 2011). Electron transfer between a carotenoid and a Chl within these complexes has been suggested as the quenching mechanism (Pinnola et al., 2016).

Another member of the LHCSR family, LHCX1, is critical for qE in diatoms, and quantitative variations in different ecotypes were suggested to influence the adaptability of diatoms to different environments (Bailleul et al., 2010; Buck et al., 2019). Structural data on LHCX1 are not available, and LHCX proteins were not resolved in the latest structure available for the PSII supercomplex (Nagao et al., 2019; Pi et al., 2019). Similar to LHCI in plants, the FCPs have been suggested to be the site where energy dissipation occurs, potentially leaving a secondary role to the LHCX proteins as transducers of the NPQ response (Elnour et al., 2018; Wang et al., 2021). Recent time-resolved fluorescence studies demonstrated that two quenching mechanisms are active in low-light acclimated diatoms, one in the proximity of the PSII core and one in the bulk FCP antenna (Chukhutsina et al., 2014; Taddei et al., 2018). Based on an analysis of an LHCX1 knockdown mutant, it was proposed that the core complex-associated NPQ is more effective in photoprotection. Acclimation to high light, on the contrary, enhances the antenna-related quenching component, facilitated by the accumulation of additional LHCX isoforms.

Adaptations to different light spectra

A regulatory mechanism called state transitions functions to distribute the harvested light energy to the PSs. Overexcitation of PSI relative to PSII brings the organism to

state I, in which the light harvested by PSII increases. On the other hand, overexcitation of PSII relative to PSI brings the organisms to state II, in which an increased amount of absorbed energy is directed toward PSI again (Allen, 2017; Johnson and Wientjes, 2019). In diatoms, no evidence of a similar mechanism has been found (Owens, 1986) and the physical process underlying state transitions appears to be different in land plants, green algae and cyanobacteria.

In plants and green algae, a similar mechanism regulates transition between states I and II based on the redox state of the plastoquinone pool (Allen et al., 1981). Reduction of the plastoquinone pool is sensed by the cytochrome *b6f* (Wollman and Lemaire, 1988; Vener et al., 1995), leading to the activation of the state transition kinase7 (Stn7). Upon its activation, Stn7 phosphorylates LHCII, which in turn dissociates from PSII and associates with PSI (state II) at the PsaK/H subunits, forming a PSI–LHCI–LHCII supercomplex (Bellafore et al., 2005; Kouřil et al., 2005; Wientjes et al., 2013). In plants, the pool of LHCII involved in this transition is ~20% (Allen, 1992; Vener 2007), and it seems as if it is LHCII heterotrimers containing two Lhcb1 and one Lhcb2 subunits are the important ones (Pietrzykowska et al., 2014) and that phosphorylation of Lhcb2 is more rapid (Leoni et al., 2013) than of Lhcb1. Recent results show that PSI antenna size can be largely extended by the association of multiple LHCII trimers. Benson et al. (2015) revealed that in addition to the “classical” binding at PsaK site, LHCII can associate with PSI via the Lhca antenna. In line with these results, Yadav et al. (2017) observed particles with more than one LHCII trimer attached with PSI at Lhca2/Lhca4, and Lhca2/Lhca3 sites. In contrast, in the green alga *C. reinhardtii*, a large portion of the LHCII is dissociated (Delosme et al., 1996) but only a minor fraction attaches to PSI, whereas the majority becomes quenched (Ünlü et al., 2014). Also here, as well as in the moss *Physcomitrium patens*, the Lhca antenna is involved in binding of LHCII trimers to PSI core complexes (Pinnola et al., 2018; Steinbeck et al., 2018). In *A. thaliana*, if the plastoquinone pool is oxidized the Stn7-kinase is deactivated and thylakoid-associated phosphatase38 (also known as protein phosphatase 1 [PPH1]) will dephosphorylate LHCII, which will then move to PSII (state I) (Pribil et al., 2010; Shapiguzov et al., 2010). In *C. reinhardtii*, two partially redundant phosphatases, CrPPH1 and PSII core phosphatase (CrPBCP), are involved in the regulation of state transitions (Cariti et al., 2020). However, there is always some LHCII bound to PSI, even in state I conditions, indicating that LHCII functions as a highly efficient PSI-antenna (Bos et al., 2019; Chukhutsina et al., 2020).

In cyanobacteria, as in plants, state transitions are triggered by a change in the redox state of the plastoquinone pool, but the molecular players that sense these changes are unknown. While the cytochrome *b6f* complex had been proposed as the redox sensor, a recent work had shown that it is not involved in cyanobacterial state transition (Calzadi et al., 2019). In the cyanobacterial species, *Synechococcus*

elongatus and *Synechocystis* sp PCC 6803, there is no redistribution of PBS, nor is there any spillover from PSII to PSI (Bhatti et al., 2020; Ranjbar Choubeh et al., 2020). However, in order to balance the excitation pressure between PSII and PSI, in state II, the PSII-core and not the PBS is quenched (Bhatti et al., 2020; Ranjbar Choubeh et al., 2020). Furthermore, in *S. elongatus*, two (sub) populations of PSII, namely quenched and unquenched exist, in both states I and II. The equilibrium between quenched and unquenched PSII is changed upon state transitions (Bhatti et al., 2021). In state I, a decoupling of PBS from PSI was observed, thereby altering the absorption cross section of PSI in *Synechocystis* sp PCC 6803 (Chukhutsina et al., 2015).

Plasticity of the light-harvesting membranes

Light-harvesting membranes are highly flexible and dynamic systems that can exhibit extraordinary plasticity, particularly under harsh and unfavorable environmental conditions. The study of thylakoid membrane plasticity is therefore important for understanding the adaptation of the membrane and PSs to ever-changing natural conditions. Changes in the membrane structure and protein composition are common features during NPQ, state transitions, and acclimation processes.

Toward high-resolution microscopy techniques to study photosynthetic adaptations

Current near-atomic resolution EM and high-resolution fluorescence imaging techniques complement each other for the studies of light-harvesting membrane plasticity. Photosynthetic membranes and their constituent subunits were investigated by EM for decades starting with purple bacteria (Tauschel and Drews, 1967). The evolution of EM techniques toward the atomic resolution of cryo-EM led to substantial discoveries of structural differences of photosynthetic complexes among organisms determined by their adaptation processes (Croce and van Amerongen, 2020). The potential of EM is further extended by cryo-electron tomography, which can provide structural information under the physiologically relevant conditions (Turk and Baumeister, 2020). Furthermore, cryo-electron tomography in combination with subvolume averaging has been used for visualization of PSs embedded in the isolated thylakoid membranes (Daum et al., 2010; Kouřil et al., 2011; Levitan et al., 2019; Arshad et al., 2021). The lack of visualization of dynamics within the sample, on the other hand, has accelerated the recent emergence of high-resolution fluorescence imaging techniques, which offer live-cell imaging possibilities. Considering the plant thylakoid membranes, structured-illumination microscopy and its derivatives have been recently shown to enable the observation of the nanometer-sized changes of the grana diameter and stacking induced by the adaptation of the organism to the varying light conditions (Wood et al., 2018, 2019). The 3D high-resolution imaging of the membrane structures is considered to bring

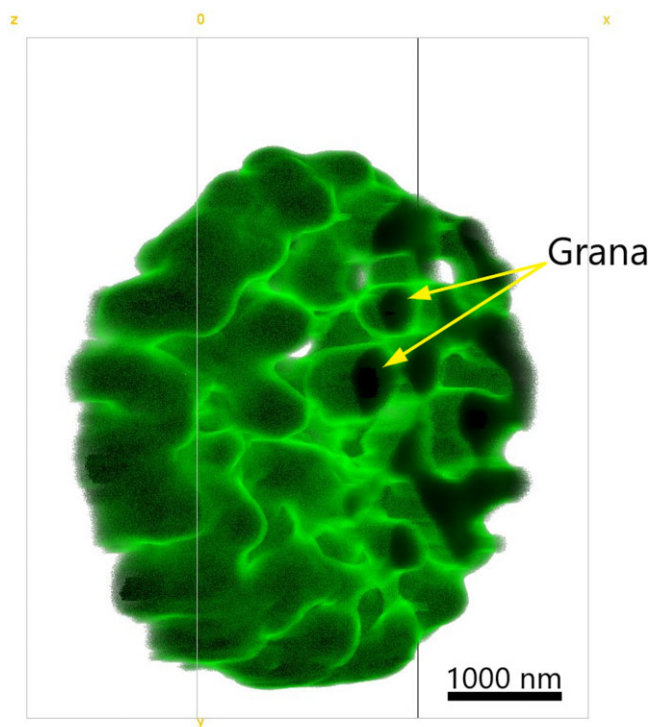


Figure 4 PRN image of the 3D *A. thaliana* thylakoid structure (turned by 45° anticlockwise around the y -axis with respect to data acquisition). Chloroplast was scanned by 70-nm x and y steps, and 300-nm z steps, collecting emission in 660–700 nm range. Sample was excited at 488 nm. 3D reconstruction was obtained from seven planes. Scale bar corresponds to 1,000 nm.

even deeper insights into the dynamics of the photosynthetic apparatus. However, only a few attempts were reported up to now for 3D imaging of the membranes within the chloroplasts (Rumak et al., 2012). Recently, a promising high-resolution technique, pixel-reconstruction nanoscopy (PRN), was developed for live-cell imaging under nondamaging light intensities and minimal sample preparation. Figure 4 shows an example of PRN applications for the photosynthetic membranes—the 3D image of the thylakoid structure of an intact plant chloroplast. Green color in the image corresponds to the autofluorescence that originates mainly from the Chl molecules located in PSII (the darker the color, the higher the emission intensity) as emission from the PSI Chls is negligible at room temperature. This, by far the most accurate 3D image of native chloroplast, gives a hint that with current imaging tools it is possible to follow membrane adaptations in a whole plastid at physiological conditions at high precision. Moreover, in PRN, the ability to measure simultaneously various fluorescence emission channels uncovers an approach to study changes occurring at different sites of the membrane under altering environment of the organism. Additional techniques are emerging/consolidating that combine the use of microscopy with spectroscopy methods. One of these, fluorescence lifetime imaging, exploits the different Chl excited-state lifetime of PSII, PSI, and LHCs to visualize, among others, the

distribution of PSs and the functional state of the antenna (e.g. during NPQ; Pascal et al., 2005; Iermak et al., 2016; Wientjes et al., 2017).

Taking plasticity to the extreme: sustained NPQ in evergreens and the requirement for posttranslational modifications

The dynamics and flexibility of thylakoid membranes have been studied extensively in the membranes of angiosperms (Pribil et al., 2014; Lambrev and Akhtar, 2019). Recently, advances have been made in broadening the knowledge of photosynthetic complexes in gymnosperms. In particular, evergreen conifer species exhibit an extraordinary acclimation capacity to harsh boreal winters and are able to develop a so-called sustained form of protective NPQ (Öquist and Huner, 2003; Verhoeven, 2014). Several recent studies in members of Pinaceae, *Picea abies*, and *Pinus sylvestris* revealed a unique LHC composition (Kouřil et al., 2016; Grebe et al., 2019) and organization of PSII-LHCII supercomplexes and mega complexes (Kouřil et al., 2020). Although the physiological relevance of these complexes during winter acclimation is still under investigation, it has been suggested that specific posttranslational modifications, phosphorylation of Lhcb1 and PsbS proteins, are important prerequisites for the sustained NPQ (Grebe et al., 2020). Regarding the physiological relevance of grana destacking during winter and early spring, a recent study proposes its advantages in the molecular mechanism of the sustained NPQ process (Bag et al., 2020). Loss of appressed grana membranes increases the chances of close proximal contact between PSI and PSII, shown to result in direct energy transfer from PSII to PSI. Direct energy transfer from PSII to PSI is conferred to harmlessly dissipate the excess light energy in sub-zero temperatures and protect the photosynthetic machinery when linear electron flow is severely restricted, and the chances of photo-oxidative damage are high.

The major sites of biogenesis of photosynthetic protein complexes

Besides the structural adaptability of photosynthetic protein complexes, their assembly and the subcellular location are part of the membrane's plasticity. In chloroplasts, thylakoid biogenesis needs the import of the major photosynthetic proteins from the cytosol. Early work by cryo-electron tomography revealed thylakoid tip convergence zones in the green alga *C. reinhardtii* and the unicellular cyanobacterium *Synechocystis* sp. PCC6803, close to the envelope which might be the site of thylakoid biogenesis (Nickelsen and Zerges, 2013; Engel et al., 2015; Rast et al., 2019). Nothing is known so far from diatoms. Cyanobacteria have been considered good candidates to study the photosynthetic protein assembly sites, as they have less complicated thylakoid membrane arrangement compared to chloroplasts (Mullineaux and Sarcina, 2002; Mullineaux, 2014).

Cyanobacterial biogenic sites have been extensively explored by many research groups (Zak et al., 2001; Pisareva

et al., 2011; Nickelsen and Rengstl, 2013; Weis et al., 2013; Selo et al., 2016; Rast et al., 2019). For the model cyanobacterium, *Synechocystis* sp. PCC 6803, the most commonly proposed sites of PS assembly are the thylakoid centers (Nickelsen and Zerges, 2013; Weis et al., 2013), that is, the regions where thylakoid membranes converge near the plasma membrane (Van De Meene et al., 2006). In a recent work, biogenic sites were investigated based on the localization of membrane-bound ribosomes in *Synechocystis* cells using cryo-electron tomography (Rast et al., 2019). Here, ribosomes were used as a marker of active protein translation. Only a small fraction of ribosomes was found near the thylakoid centers, while the majority was located at the thylakoid surfaces adjacent to the central cytoplasm. This suggests that the translation of photosynthetic protein subunits is not concentrated at the thylakoid centers. Furthermore, location of ribosomes can only provide a general idea regarding the overall protein synthesis. To specifically identify the start site of photosynthetic protein assembly, very recently a different approach was used, where mRNAs encoding the core subunits of PSI and II are probed in vivo in two model cyanobacteria (Mahbub et al., 2020). In this study, a single-molecule RNA Fluorescence in situ Hybridization (FISH) technique was used to visualize the target mRNAs in the cell. Results show that photosynthetic mRNAs mainly cluster as tight foci near the thylakoid surfaces adjacent to the central cytoplasm (Mahbub et al., 2020). In contrast, mRNAs encoding nonmembrane integral proteins locate further away from the thylakoid membrane. Treatments with protein translation inhibitors (puromycin and lincomycin) indicate that ribosome association with the mRNAs influences the distribution of mRNAs at the thylakoid surface. Therefore, these mRNA clusters adjacent to the cytosol-facing surface of the thylakoid membranes represent the major sites of translation of the core components of the PS (Mahbub et al., 2020).

The distribution pattern of PSII mRNA varies in different light conditions. Due to its extreme sensitivity to light, the D1 core protein of PSII undergoes a continuous damage and repair cycle (Nixon et al., 2010). In short-term high-light stress, D1 repair dominates over the de novo synthesis. In response to the stress, FISH signals distribute diffusely along the cytosol-facing surfaces of the thylakoid membranes, whereas in standard growth light conditions, the signal is more punctate (Mahbub et al., 2020). Therefore, mRNA-FISH probing can also detect the variable distribution of PSII synthesis, and thereby membrane plasticity in response to different environmental cues.

Conclusions and future prospects

This review provides an update on the current understanding of photosynthetic light-harvesting and regulatory processes in vascular plants, algae, and cyanobacteria, whereby some questions still acquire more attention (see "Outstanding Questions"). The astonishing diversity in different evolutionary clades results in a kaleidoscope of solutions

OUTSTANDING QUESTIONS

- What is the precise role of PsbS and zeaxanthin in regulating energy fluxes within PSII during NPQ?
- Is energy dissipation in the PBS the result of energy transfer to the carotenoid of the OCP? What are the roles of the OCP homologs CTDH and HCP?
- Which FCP proteins are involved in NPQ in diatoms?
- Which additional traits besides zeaxanthin accumulation and PsbS can be used to increase crop yield, also in view of increasing temperatures and more frequent droughts?
- How does antenna composition and size impact the productivity of major crop species?

for light harvesting and photoprotection, in which the plasticity of the thylakoid membranes plays a crucial role. The recent development of accurate, high-resolution techniques to study the molecular processes during light harvesting, as well as the creation of informative mutants, has allowed fresh insights into this area.

For the most part, crop science has focused on agronomic approaches and breeding to improve plant architecture and light capture. However, annual increases in yields of the major crops in many parts of the world have plateaued, and new technological solutions must be explored (Blankenship et al., 2011; Ort et al., 2015). Improving photosynthesis through genetic engineering of light-harvesting processes is a possible solution to the development of new crop varieties with a higher yield potential (Kromdijk et al., 2016; Głowacka et al., 2018; Hubbart et al., 2018; Kirst et al., 2018; Simkin et al., 2019; Chen et al., 2020). Traits such as the protein PsbS and the carotenoid zeaxanthin have become prime examples of this. A strict control of energy dissipation within PSII in tobacco (*Nicotiana tabacum*) plants resulted in an increase of up to 15% in biomass in field conditions (Kromdijk et al., 2016), a finding that has more recently been translated to rice (*Oryza sativa*; Hubbart et al., 2018). PS antenna cross-section has also been revealed to be an important target for biotechnological improvement. A smaller size of the whole antenna complement has been often reported to positively affect biomass accumulation in plants and algae (Cazzaniga et al., 2014; Kirst et al., 2018). A precise understanding of antenna diversity and light-harvesting strategies is therefore pivotal for the identification of new targets for crop improvement.

Funding

The authors acknowledge funding from the European Union's Horizon 2020 research and innovation program under the Marie Skłodowska-Curie grant agreement No 675006

(SE2B: Solar Energy to Biomass—Optimization of light energy conversion in plants and microalgae).

Conflict of interest statement. None declared.

References

- Acuña AM, Lemaire C, van Grondelle R, Robert B, van Stokkum IHM** (2018) Energy transfer and trapping in *Synechococcus* WH 7803. *Photosynth Res* **135**: 115–124
- Adir N** (2005) Elucidation of the molecular structures of components of the phycobilisome: reconstructing a giant. *Photosynth Res* **85**: 15–32
- Adir N, Bar-Zvi S, Harris D** (2020) The amazing phycobilisome. *Biochim Biophys Acta - Bioenerg* **1861**: 148047
- Ahn TK, Avenson TJ, Ballottari M, Cheng YC, Niyogi KK, Bassi R, Fleming GR** (2008) Architecture of a charge-transfer state regulating light harvesting in a plant antenna protein. *Science* **320**: 794–797
- Akhtar P, Biswas A, Petrova N, Zakar T, van Stokkum IHM, Lambrev PH** (2020) Time-resolved fluorescence study of excitation energy transfer in the cyanobacterium *Anabaena* PCC 7120. *Photosynth Res* **144**: 247–259
- Allen JF** (2017) Why we need to know the structure of phosphorylated chloroplast light-harvesting complex II. *Physiol Plant* **161**: 28–44
- Allen JF** (1992) Protein phosphorylation in regulation of photosynthesis. *Biochim Biophys Acta - Bioenerg* **1098**: 275–335
- Allen JF, Bennett J, Steinback KE, Arntzen CJ** (1981) Chloroplast protein phosphorylation couples plastoquinone redox state to distribution of excitation energy between photosystems. *Nature* **291**: 25–29
- Allorent G, Tokutsu R, Roach T, Peers G, Cardol P, Girard-Bascou J, Seigneurin-Berny D, Petrossos D, Kuntz M, Breyton C, et al.** (2013) Dual strategy to cope with high light in *Chlamydomonas reinhardtii*. *Plant Cell* **25**: 545–557
- Anderson JM** (1986) Photoregulation of the composition, function, and structure of thylakoid membranes. *Annu Rev Plant Physiol* **37**: 93–136
- Andersson J, Wentworth M, Walters RG, Howard CA, Ruban A V., Horton P, Jansson S** (2003) Absence of the Lhcb1 and Lhcb2 proteins of the light-harvesting complex of photosystem II - Effects on photosynthesis, grana stacking and fitness. *Plant J* **35**: 350–361
- Arshad R, Calvaruso C, Boekema EJ, Büchel C, Kouřil R** (2021) Revealing the architecture of the photosynthetic apparatus in the diatom *Thalassiosira pseudonana*. *Plant Physiol* **186**: 2124–2136
- Bag P, Chukhutsina V, Zhang Z, Paul S, Ivanov AG, Shutova T, Croce R, Holzwarth AR, Jansson S** (2020) Direct energy transfer from photosystem II to photosystem I confers winter sustainability in Scots Pine. *Nat Commun* **11**: 6388
- Bailleul B, Rogato A, De Martino A, Coesel S, Cardol P, Bowler C, Falcatore A, Finazzi G** (2010) An atypical member of the light-harvesting complex stress-related protein family modulates diatom responses to light. *Proc Natl Acad Sci USA* **107**: 18214–18219
- Bao H, Melnicki MR, Pawlowski EG, Sutter M, Agostoni M, Lechno-Yossef S, Cai F, Montgomery BL, Kerfeld CA** (2017) Additional families of orange carotenoid proteins in the photoprotective system of cyanobacteria. *Nat Plants* **3**: 1–11
- Bassi R, Dall'Osto L** (2021) Dissipation of light energy absorbed in excess: the molecular mechanisms. *Annu Rev Plant Biol* **72**: 47–76
- Bellafiore S, Barneche F, Peltier G, Rochaix J-D** (2005) State transitions and light adaptation require chloroplast thylakoid protein kinase STN7. *Nature* **433**: 892–895
- Bennett DIG, Amarnath K, Park S, Steen CJ, Morris JM, Fleming GR** (2019) Models and mechanisms of the rapidly reversible regulation of photosynthetic light harvesting. *Open Biol* **9**: 190043
- Ben-Shem A, Frolow F, Nelson N** (2003) Crystal structure of plant photosystem I. *Nature* **426**: 630–635
- Benson SL, Maheswaran P, Ware MA, Hunter CN, Horton P, Jansson S, Ruban AV., Johnson MP** (2015) An intact light harvesting complex i antenna system is required for complete state transitions in Arabidopsis. *Nat Plants* **1**: 1–9
- Bhatti AF, Choubeh RR, Kirilovsky D, Wientjes E, van Amerongen H** (2020) State transitions in cyanobacteria studied with picosecond fluorescence at room temperature. *Biochim Biophys Acta - Bioenerg* **1861**: 148255
- Bhatti AF, Kirilovsky D, van Amerongen H, Wientjes E** (2021) State transitions and photosystems spatially resolved in individual cells of the cyanobacterium *Synechococcus elongatus*. *Plant Physiol* **186**: 569–580
- Biswas A, Huang X, Lambrev PH, van Stokkum IHM** (2020) Modelling excitation energy transfer and trapping in the filamentous cyanobacterium *Anabaena variabilis* PCC 7120. *Photosynth Res* **144**: 261–272
- Blankenship RE, Tiede DM, Barber J, Brudvig GW, Fleming G, Ghirardi M, Gunner MR, Junge W, Kramer DM, Melis A, et al.** (2011) Comparing photosynthetic and photovoltaic efficiencies and recognizing the potential for improvement. *Science* **332**: 805–809
- Bonente G, Ballottari M, Truong TB, Morosinotto T, Ahn TK, Fleming GR, Niyogi KK, Bassi R** (2011) Analysis of LHCsR3, a protein essential for feedback de-excitation in the green alga *Chlamydomonas reinhardtii*. *PLoS Biol* **9**: e1000577
- Bos P, Oosterwijk A, Koehorst R, Bader A, Philippi J, van Amerongen H, Wientjes E** (2019) Digitonin-sensitive LHClI enlarges the antenna of Photosystem I in stroma lamellae of *Arabidopsis thaliana* after far-red and blue-light treatment. *Biochim Biophys Acta - Bioenerg* **1860**: 651–658
- Büchel C** (2003) Fucoxanthin-chlorophyll proteins in diatoms: 18 and 19 kDa subunits assemble into different oligomeric states. *Biochemistry* **42**: 13027–13034
- Büchel C** (2015) Evolution and function of light harvesting proteins. *J Plant Physiol* **172**: 62–75
- Buck JM, Sherman J, Bártulos CR, Serif M, Halder M, Henkel J, Falcatore A, Lavaud J, Gorbunov MY, Kroth PG, et al.** (2019) Lhcx proteins provide photoprotection via thermal dissipation of absorbed light in the diatom *Phaeodactylum tricorutum*. *Nat Commun* **10**: 4167
- De Bianchi S, Dall'osto L, Tognon G, Morosinotto T, Bassi R** (2008) Minor antenna proteins CP24 and CP26 affect the interactions between photosystem II subunits and the electron transport rate in grana membranes of Arabidopsis. *Plant Cell* **20**: 1012–1028
- Caffarri S, Broess K, Croce R, van Amerongen H** (2011) Excitation energy transfer and trapping in higher plant photosystem II complexes with different antenna sizes. *Biophys J* **100**: 2094–2103
- Caffarri S, Croce R, Cattivelli L, Bassi R** (2004) A look within LHClI: Differential analysis of the Lhcb1-3 complexes building the major trimeric antenna complex of higher-plant photosynthesis. *Biochemistry* **43**: 9467–9476
- Calvaruso C, Rokka A, Aro EM, Büchela C** (2020) Specific Lhc proteins are bound to PSI or PSII supercomplexes in the diatom *Thalassiosira pseudonana*. *Plant Physiol* **183**: 67–79
- Calzadi PI, Zhan J, Sétif P, Lemaire C, Solymosi D, Battchikova N, Wang Q, Kirilovskya D** (2019) The cytochrome b6f complex is not involved in cyanobacterial state transitions. *Plant Cell* **31**: 911–931
- Cardona T** (2017) Photosystem II is a chimera of reaction centers. *J Mol Evol* **84**: 149–151
- Cariti F, Chazaux M, Lefebvre-Legendre L, Longoni P, Ghysels B, Johnson X, Goldschmidt-Clermont M** (2020) Regulation of light harvesting in *Chlamydomonas reinhardtii*; two protein phosphatases are involved in state transitions. *Plant Physiol* **183**: 1749–1764

- Cazzaniga S, Dall'Osto L, Szaub J, Scibilia L, Ballottari M, Purton S, Bassi R** (2014) Domestication of the green alga *Chlorella sorokiniana*: reduction of antenna size improves light-use efficiency in a photobioreactor. *Biotechnol Biofuels* **7**: 157
- Chen JH, Chen ST, He NY, Wang QL, Zhao Y, Gao W, Guo FQ** (2020) Nuclear-encoded synthesis of the D1 subunit of photosystem II increases photosynthetic efficiency and crop yield. *Nat Plants* **6**: 570–580
- Chukhutsina V, Bersanini L, Aro EM, Van Amerongen H** (2015) Cyanobacterial light-harvesting phycobilisomes uncouple from photosystem I during dark-to-light transitions. *Sci Rep* **5**: 14193
- Chukhutsina VU, Büchel C, Van Amerongen H** (2014) Disentangling two non-photochemical quenching processes in *Cyclotella meneghiniana* by spectrally-resolved picosecond fluorescence at 77 K. *Biochim Biophys Acta - Bioenerg* **1837**: 899–907
- Chukhutsina VU, Liu X, Xu P, Croce R** (2020) Light-harvesting complex II is an antenna of photosystem I in dark-adapted plants. *Nat Plants* **6**: 860–868
- Correa-Galvis V, Poschmann G, Melzer M, Stühler K, Jahns P** (2016) PsbS interactions involved in the activation of energy dissipation in *Arabidopsis*. *Nat Plants* **2**: 1–8
- Croce R, van Amerongen H** (2020) Light harvesting in oxygenic photosynthesis: Structural biology meets spectroscopy. *Science* **369**: eaay2058
- Croce R, van Amerongen H** (2013) Light-harvesting in photosystem I. *Photosynth Res* **116**: 153–166
- Croce R, van Grondelle R, van Amerongen H, van Stokkum I** (2018) Light Harvesting in Photosynthesis. CRC Press, Boca Raton, FL, pp 1–598
- Dall'Osto L, Caner Ü, Cazzaniga S, Van Amerongen H** (2014) Disturbed excitation energy transfer in *Arabidopsis thaliana* mutants lacking minor antenna complexes of photosystem II. *Biochim Biophys Acta - Bioenerg* **1837**: 1981–1988
- Dall'Osto L, Cazzaniga S, Bressan M, Paleček D, Židek K, Niyogi KK, Fleming GR, Zigmantas D, Bassi R** (2017) Two mechanisms for dissipation of excess light in monomeric and trimeric light-harvesting complexes. *Nat Plants* **3**: 17033
- Dall'Osto L, Cazzaniga S, Zappone D, Bassi R** (2020) Monomeric light harvesting complexes enhance excitation energy transfer from LHCII to PSII and control their lateral spacing in thylakoids. *Biochim Biophys Acta - Bioenerg* **1861**: 148035
- Daskalakis V, Papadatos S, Kleinekathöfer U** (2019) Fine tuning of the photosystem II major antenna mobility within the thylakoid membrane of higher plants. *Biochim Biophys Acta - Biomemb* **1861**: 183059
- Daum B, Nicastro D, Austin J, Richard McIntosh J, Kühlbrandt W** (2010) Arrangement of photosystem II and ATP synthase in chloroplast membranes of spinach and pea. *Plant Cell* **22**: 1299–1312
- Dekker JP, Boekema EJ** (2005) Supramolecular organization of thylakoid membrane proteins in green plants. *Biochim Biophys Acta-Bioenerg* **1706**: 12–39
- Delosme R, Olive J, Wollman FA** (1996) Changes in light energy distribution upon state transitions: an in vivo photoacoustic study of the wild type and photosynthesis mutants from *Chlamydomonas reinhardtii*. *Biochim Biophys Acta-Bioenerg* **1273**: 150–158
- Demmig-Adams B, Garab G, Adams WW, Govindjee** (2014) Non-Photochemical Quenching and Energy Dissipation in Plants, Algae and Cyanobacteria. *Advances in Photosynthesis and Respiration*. Springer US, Berlin, Germany
- Dinc E, Tian L, Roy LM, Roth R, Goodenough U, Croce R** (2016) LHCSR1 induces a fast and reversible pH-dependent fluorescence quenching in LHCII in *Chlamydomonas reinhardtii* cells. *Proc Natl Acad Sci USA* **113**: 7673–7678
- Dominici P, Caffarri S, Armenante F, Ceoldo S, Crimi M, Bassi R** (2002) Biochemical properties of the PsbS subunit of photosystem II either purified from chloroplast or recombinant. *J Biol Chem* **277**: 22750–22758
- Drop B, Webber-Birungi M, Yadav SKN, Filipowicz-Szymanska A, Fusetti F, Boekema EJ, Croce R** (2014) Light-harvesting complex II (LHCII) and its supramolecular organization in *Chlamydomonas reinhardtii*. *Biochim Biophys Acta-Bioenerg* **1837**: 63–72
- Elnour HMAM, Dietzel L, Ramanan C, Büchel C, van Grondelle R, Krüger TPJ** (2018) Energy dissipation mechanisms in the FCPb light-harvesting complex of the diatom *Cyclotella meneghiniana*. *Biochim Biophys Acta-Bioenerg* **10**: 1151–1160
- Engel BD, Schaffer M, Cuellar LK, Villa E, Plitzko JM, Baumeister W** (2015) Native architecture of the *Chlamydomonas* chloroplast revealed by in situ cryo-electron tomography. *eLife* **2015**: 1–29
- Fan M, Li M, Liu Z, Cao P, Pan X, Zhang H, Zhao X, Zhang J, Chang W** (2015) Crystal structures of the PsbS protein essential for photoprotection in plants. *Nat Struct Mol Biol* **22**: 729–35
- Field CB, Behrenfeld MJ, Randerson JT, Falkowski P** (1998) Primary production of the biosphere: integrating terrestrial and oceanic components. *Science* **281**: 237–240
- Flori S, Jouneau PH, Bailleul B, Gallet B, Estrozi LF, Moriscot C, Bastien O, Eicke S, Schober A, Bártulos CR, et al.** (2017) Plastid thylakoid architecture optimizes photosynthesis in diatoms. *Nat Commun* **8**: 15885
- Giovagnetti V, Ruban AV.** (2018) The evolution of the photoprotective antenna proteins in oxygenic photosynthetic eukaryotes. *Biochem Soc Trans* **46**: 1263–1277
- Glauser M, Bryant DA, Frank G, Wehrli E, Rusconi SS, Sidler W, Zuber H** (1992) Phycobilisome structure in the cyanobacteria *Mastigocladus laminosus* and *Anabaena* sp. PCC 7120. *Eur J Biochem* **205**: 907–915
- Głowacka K, Kromdijk J, Kucera K, Xie J, Cavanagh AP, Leonelli L, Leakey ADB, Ort DR, Niyogi KK, Long SP** (2018) Photosystem II subunit S overexpression increases the efficiency of water use in a field-grown crop. *Nat Commun* **9**: 868
- Goss R, Lepetit B** (2015) Biodiversity of NPQ. *J Plant Physiol* **172**: 13–32
- Grebe S, Trotta A, Bajwa AA, Mancini I, Bag P, Jansson S, Tikkanen M, Aro E-M** (2020) Specific thylakoid protein phosphorylations are prerequisites for overwintering of Norway spruce (*Picea abies*) photosynthesis. *Proc Natl Acad Sci USA* **117**: 17499–17509
- Grebe S, Trotta A, Bajwa AA, Suorsa M, Gollan PJ, Jansson S, Tikkanen M, Aro EM** (2019) The unique photosynthetic apparatus of pinaceae: analysis of photosynthetic complexes in *Picea abies*. *J Exp Bot* **70**: 3211–3226
- Guardini Z, Bressan M, Cafferri R, Bassi R, Dall'Osto L** (2020) Identification of a pigment cluster catalysing fast photoprotective quenching response in CP29. *Nat Plants* **6**: 303–313
- Gundermann K, Schmidt M, Weisheit W, Mittag M, Büchel C** (2013) Identification of several sub-populations in the pool of light harvesting proteins in the pennate diatom *Phaeodactylum tricoratum*. *Biochim Biophys Acta - Bioenerg* **1827**: 303–310
- Harris D, Tal O, Jallet D, Wilson A, Kirilovsky D, Adir N** (2016) Orange carotenoid protein burrows into the phycobilisome to provide photoprotection. *Proc Natl Acad Sci USA* **113**: E1655–E1662
- Harris D, Wilson A, Muzzopappa F, Sluchanko NN, Friedrich T, Maksimov EG, Kirilovsky D, Adir N** (2018) Structural rearrangements in the C-terminal domain homolog of Orange Carotenoid Protein are crucial for carotenoid transfer. *Commun Biol* **1**: 125
- Havaux M** (1998) Carotenoids as membrane stabilizers in chloroplasts. *Trends Plant Sci* **3**: 147–151
- Holt NE, Zigmantas D, Valkunas L, Li XP, Niyogi KK, Fleming GR** (2005) Carotenoid cation formation and the regulation of photosynthetic light harvesting. *Science* **307**: 433–436
- Hubbart S, Smillie IRA, Heatley M, Swarup R, Foo CC, Zhao L, Murchie EH** (2018) Enhanced thylakoid photoprotection can increase yield and canopy radiation use efficiency in rice. *Commun Biol* **1**: 1–12

- Iermak I, Vink J, Bader AN, Wientjes E, Van Amerongen H** (2016) Visualizing heterogeneity of photosynthetic properties of plant leaves with two-photon fluorescence lifetime imaging microscopy. *Biochim Biophys Acta-Bioenerg* **1857**: 1473–1478
- Jansson S** (1999) A guide to the Lhc genes and their relatives in *Arabidopsis*. *Trends Plant Sci* **4**: 236–240
- Jansson S, Stefánsson H, Nyström U, Gustafsson P, Albertsson PÅ** (1997) Antenna protein composition of PS I and PS II in thylakoid sub-domains. *Biochim Biophys Acta-Bioenerg* **1320**: 297–309
- Johnson MP, Wientjes E** (2019) The relevance of dynamic thylakoid organisation to photosynthetic regulation. *Biochim Biophys Acta-Bioenerg* **1861**: 148039
- Johnson MP, Zia A, Ruban AV** (2012) Elevated Δ pH restores rapidly reversible photoprotective energy dissipation in *Arabidopsis* chloroplasts deficient in lutein and xanthophyll cycle activity. *Planta* **235**: 193–204
- Jordan P, Fromme P, Witt HT, Klukas O, Saenger W, Krauß N** (2001) Three-dimensional structure of cyanobacterial photosystem I at 2.5 Å resolution. *Nature* **411**: 909
- Kerfeld CA, Melnicki MR, Sutter M, Dominguez-Martin MA** (2017) Structure, function and evolution of the cyanobacterial orange carotenoid protein and its homologs. *New Phytol* **215**: 937–951
- Kirst H, Shen Y, Vamvaka E, Betterle N, Xu D, Warek U, Strickland JA, Melis A** (2018) Downregulation of the CpsRP43 gene expression confers a truncated light-harvesting antenna (TLA) and enhances biomass and leaf-to-stem ratio in *Nicotiana tabacum* canopies. *Planta* **248**: 139–154
- Kouřil R, Nosek L, Bartoš J, Boekema EJ, Ilík P** (2016) Evolutionary loss of light-harvesting proteins Lhcb6 and Lhcb3 in major land plant groups – break-up of current dogma. *New Phytol* **210**: 808–814
- Kouřil R, Nosek L, Opatíková M, Arshad R, Semchonok DA, Chamrád I, Lenobel R, Boekema EJ, Ilík P** (2020) Unique organization of photosystem II supercomplexes and megacomplexes in Norway spruce. *Plant J* **104**: 215–225
- Kouřil R, Nosek L, Semchonok D, Boekema EJ, Ilík P** (2018) Organization of plant photosystem II and photosystem I supercomplexes. *Subcell Biochem* **87**: 259–286
- Kouřil R, Oostergetel GT, Boekema EJ** (2011) Fine structure of granal thylakoid membrane organization using cryo electron tomography. *Biochim Biophys Acta-Bioenerg* **1807**: 368–374
- Kouřil R, Zygadlo A, Arteni AA, De Wit CD, Dekker JP, Jensen PE, Scheller HV, Boekema EJ** (2005) Structural characterization of a complex of photosystem I and light-harvesting complex II of *Arabidopsis thaliana*. *Biochemistry* **44**: 10935–10940
- Krishnan-Schmieden M, Konold PE, Kennis JTM, Pandit A** (2021) The molecular pH-response mechanism of the plant light-stress sensor PsbS. *Nat Commun* **12**: 2291
- Kromdijk J, Glowacka K, Leonelli L, Gabilly ST, Iwai M, Niyogi KK, Long SP** (2016) Improving photosynthesis and crop productivity by accelerating recovery from photoprotection. *Science* **354**: 857–861
- Lambrev PH, Akhtar P** (2019) Macroorganisation and flexibility of thylakoid membranes. *Biochem J* **476**: 2981–3018
- Leoni C, Pietrzykowska M, Kiss AZ, Suorsa M, Ceci LR, Aro EM, Jansson S** (2013) Very rapid phosphorylation kinetics suggest a unique role for Lhcb2 during state transitions in *Arabidopsis*. *Plant J* **76**: 236–246
- Lepetit B, Gélín G, Lepetit M, Sturm S, Vugrinec S, Rogato A, Kroth PG, Falcatore A, Lavaud J** (2017) The diatom *Phaeodactylum tricornutum* adjusts nonphotochemical fluorescence quenching capacity in response to dynamic light via fine-tuned Lhcx and xanthophyll cycle pigment synthesis. *New Phytol* **214**: 205–218
- Levitani O, Chen M, Kuang X, Cheong KY, Jiang J, Banal M, Nambiar N, Gorbunov MY, Ludtke SJ, Falkowski PG, et al.** (2019) Structural and functional analyses of photosystem II in the marine diatom *Phaeodactylum tricornutum*. *Proc Natl Acad Sci USA* **116**: 17316–17322
- Li XP, Gilmore AM, Caffarri S, Bassi R, Golan T, Kramer D, Niyogi KK** (2004) Regulation of photosynthetic light harvesting involves intrathylakoid lumen pH sensing by the PsbS protein. *J Biol Chem* **279**: 22866–22874
- Li Z, Ahn TK, Avenson TJ, Ballottari M, Cruz JA, Kramer DM, Bassi R, Fleming GR, Keasling JD, Niyogi KK** (2009) Lutein accumulation in the absence of zeaxanthin restores nonphotochemical quenching in the *Arabidopsis thaliana* npq1 mutant. *Plant Cell* **21**: 1798–1812
- Liguori N, Campos SRR, Baptista AM, Croce R** (2019) Molecular anatomy of plant photoprotective switches: the sensitivity of PsbS to the environment, residue by residue. *J Phys Chem Lett* **10**: 1737–1742
- Liguori N, Roy LM, Opacic M, Durand G, Croce R** (2013) Regulation of light harvesting in the green alga *Chlamydomonas reinhardtii*: the c-terminus of lhcsr is the knob of a dimmer switch. *J Am Chem Soc* **135**: 18339–18342
- Liu H, Zhang MM, Weisz DA, Cheng M, Pakrasi HB, Blankenship RE** (2021) Structure of cyanobacterial phycobilisome core revealed by structural modeling and chemical cross-linking. *Sci Adv* **7**: 1–11
- López-Igual R, Wilson A, Leverenz RL, Melnicki MR, de Carbon CB, Sutter M, Turmo A, Perreau F, Kerfeld CA, Kirilovsky D** (2016) Different functions of the paralogs to the N-terminal domain of the orange carotenoid protein in the cyanobacterium *Anabaena* sp. PCC 7120. *Plant Physiol* **171**: 1852–1866
- Ma J, You X, Sun S, Wang X, Qin S, Sui SF** (2020) Structural basis of energy transfer in *Porphyridium purpureum* phycobilisome. *Nature* **579**: 146–151
- Mahbub M, Hemm L, Yang Y, Kaur R, Carmen H, Engl C, Huokko T, Riediger M, Watanabe S, Liu LN, et al.** (2020) mRNA localization, reaction centre biogenesis and thylakoid membrane targeting in cyanobacteria. *Nat Plants* **6**: 1179–1191
- Mascoli V, Gelzinis A, Chmeliov J, Valkunas L, Croce R** (2020a) Light-harvesting complexes access analogue emissive states in different environments. *Chem Sci* **11**: 5697–5709
- Mascoli V, Liguori N, Xu P, Roy LM, van Stokkum IHM, Croce R** (2019) Capturing the quenching mechanism of light-harvesting complexes of plants by zooming in on the ensemble. *Chem* **5**: 2900–2912
- Mascoli V, Novoderezhkin V, Liguori N, Xu P, Croce R** (2020b) Design principles of solar light harvesting in plants: functional architecture of the monomeric antenna CP29. *Biochim Biophys Acta-Bioenerg* **1861**: 148156
- Mazor Y, Borovikova A, Caspy I, Nelson N** (2017) Structure of the plant photosystem I supercomplex at 2.6 Å resolution. *Nat Plants* **3**: 1–9
- Van De Meene AML, Hohmann-Marriott MF, Vermaas WFJ, Roberson RW** (2006) The three-dimensional structure of the cyanobacterium *Synechocystis* sp. PCC 6803. *Arch Microbiol* **184**: 259–270
- Melnicki MR, Leverenz RL, Sutter M, López-Igual R, Wilson A, Pawlowski EG, Perreau F, Kirilovsky D, Kerfeld CA** (2016) Structure, diversity, and evolution of a new family of soluble carotenoid-binding proteins in cyanobacteria. *Mol Plant* **9**: 1379–1394
- Moya I, Silvestri M, Vallon O, Cinque G, Bassi R** (2001) Time-resolved fluorescence analysis of the photosystem II antenna proteins in detergent micelles and liposomes. *Biochemistry* **40**: 12552–12561
- Mullineaux CW** (2014) Electron transport and light-harvesting switches in cyanobacteria. *Front Plant Sci* **5**: 1–6
- Mullineaux CW, Sarcina M** (2002) Probing the dynamics of photosynthetic membranes with fluorescence recovery after photobleaching. *Trends Plant Sci* **7**: 237–240
- Muzzopappa F, Kirilovsky D** (2020) Changing color for photoprotection: the orange carotenoid protein. *Trends Plant Sci* **25**: 92–104

- Muzzopappa F, Wilson A, Kirilovsky D (2019) Interdomain interactions reveal the molecular evolution of the orange carotenoid protein. *Nat Plants* 5: 1076–1086
- Muzzopappa F, Wilson A, Yogarajah V, Cot S, Perreau F, Montigny C, de Carbon CB, Kirilovsky D (2017) Paralogs of the C-terminal domain of the cyanobacterial orange carotenoid protein are carotenoid donors to helical carotenoid proteins. *Plant Physiol* 175: 1283–1303
- Nagao R, Kato K, Ifuku K, Suzuki T, Kumazawa M, Uchiyama I, Kashino Y, Dohmae N, Akimoto S, Shen JR, et al. (2020) Structural basis for assembly and function of a diatom photosystem I-light-harvesting supercomplex. *Nat Commun* 11: 2481
- Nagao R, Kato K, Suzuki T, Ifuku K, Uchiyama I, Kashino Y, Dohmae N, Akimoto S, Shen JR, Miyazaki N, et al. (2019) Structural basis for energy harvesting and dissipation in a diatom PSII-FCPII supercomplex. *Nat Plants* 5: 890–901
- Nelson N (2009) Plant photosystem I – the most efficient nano-photochemical machine. *J Nanosci Nanotechnol* 9: 1709–1713
- Nickelsen J, Rengstl B (2013) Photosystem II assembly: from cyanobacteria to plants. *Annu Rev Plant Biol* 64: 609–635
- Nickelsen J, Zerges W (2013) Thylakoid biogenesis has joined the new era of bacterial cell biology. *Front Plant Sci* 4: 1–4
- Nicol L, Croce R (2021) The PsbS protein and low pH are necessary and sufficient to induce quenching in the light-harvesting complex of plants LHClI. *Sci Rep* 11: 1–8
- Nicol L, Nawrocki WJ, Croce R (2019) Disentangling the sites of non-photochemical quenching in vascular plants. *Nat Plants* 5: 1177–1183
- Nixon PJ, Michoux F, Yu J, Boehm M, Komenda J (2010) Recent advances in understanding the assembly and repair of photosystem II. *Ann Bot* 106: 1–16
- Van Oort B, Roy LM, Xu P, Lu Y, Karcher D, Bock R, Croce R (2018) Revisiting the role of xanthophylls in nonphotochemical quenching. *J Phys Chem Lett* 9: 346–352
- Öquist G, Huner NPA (2003) Photosynthesis of overwintering evergreen plants. *Annu Rev Plant Biol* 54: 329–355
- Ort DR, Merchant SS, Alric J, Barkan A, Blankenship RE, Bock R, Croce R, Hanson MR, Hibberd JM, Long SP, et al. (2015) Redesigning photosynthesis to sustainably meet global food and bioenergy demand. *Proc Natl Acad Sci USA* 112: 1–8
- Owens TG (1986) Photosystem II heterogeneity in the marine diatom *Phaeodactylum tricorutum*. *Photochem Photobiol* 43: 535–544
- Pan X, Cao P, Su X, Liu Z, Li M (2020) Structural analysis and comparison of light-harvesting complexes I and II. *Biochim Biophys Acta-Bioenerg* 1861: 148038
- Park S, Fischer AL, Li Z, Bassi R, Niyogi KK, Fleming GR (2017) Snapshot transient absorption spectroscopy of carotenoid radical cations in high-light-acclimating thylakoid membranes. *J Phys Chem Lett* 8: 5548–5554
- Park S, Fischer AL, Steen CJ, Iwai M, Morris JM, Walla PJ, Niyogi KK, Fleming GR (2018) Chlorophyll-carotenoid excitation energy transfer in high-light-exposed thylakoid membranes investigated by snapshot transient absorption spectroscopy. *J Am Chem Soc* 140: 11965–11973
- Pascal AA, Liu Z, Broess K, van Oort B, van Amerongen H, Wang C, Horton P, Robert B, Chang W, Ruban A (2005) Molecular basis of photoprotection and control of photosynthetic light-harvesting. *Nature* 436: 134–137
- Pawlak K, Paul S, Liu C, Reus M, Yang C, Holzwarth AR (2020) On the PsbS-induced quenching in the plant major light-harvesting complex LHClI studied in proteoliposomes. *Photosynth Res* 144: 195–208
- Peers G, Truong TB, Ostendorf E, Busch A, Elrad D, Grossman AR, Hippler M, Niyogi KK (2009) An ancient light-harvesting protein is critical for the regulation of algal photosynthesis. *Nature* 462: 518–21
- Pi X, Zhao S, Wang W, Liu D, Xu C, Han G, Kuang T, Sui SF, Shen JR (2019) The pigment-protein network of a diatom photosystem II-light-harvesting antenna supercomplex. *Science* 365: eaax4406
- Pietrzykowska M, Suorsa M, Semchonok DA, Tikkanen M, Boekema EJ, Aro EM, Jansson S (2014) The light-harvesting chlorophyll a/b binding proteins Lhcb1 and Lhcb2 play complementary roles during state transitions in *Arabidopsis*. *Plant Cell* 26: 3646–3660
- Pinnola A, Alboresi A, Nosek L, Semchonok DA, Rameez A, Trotta A, Barozzi F, Kouřil R, Dall’Osto L, Aro EM, et al. (2018) A LHCB9-dependent photosystem I megacomplex induced under low light in *Physcomitrella patens*. *Nat Plants* 4: 910–919
- Pinnola A, Staleva-Musto H, Capaldi S, Ballottari M, Bassi R, Polívka T (2016) Electron transfer between carotenoid and chlorophyll contributes to quenching in the LHCSR1 protein from *Physcomitrella patens*. *Biochim Biophys Acta - Bioenerg* 1857: 1870–1878
- Pisareva T, Kwon J, Oh J, Kim S, Ge C, Wieslander Å, Choi JS, Norling B (2011) Model for membrane organization and protein sorting in the cyanobacterium *Synechocystis* sp. PCC 6803 inferred from proteomics and multivariate sequence analyses. *J Proteome Res* 10: 3617–3631
- Polukhina I, Fristedt R, Dinc E, Cardol P, Croce R (2016) Carbon supply and photoacclimation cross talk in the green alga *Chlamydomonas reinhardtii*. *Plant Physiol* 172: 1494–1505
- Premvardhan L, Robert B, Beer A, Büchel C (2010) Pigment organization in fucoxanthin chlorophyll a/c2 proteins (FCP) based on resonance Raman spectroscopy and sequence analysis. *Biochim Biophys Acta-Bioenerg* 1797: 1647–1656
- Pribil M, Labs M, Leister D (2014) Structure and dynamics of thylakoids in land plants. *J Exp Bot* 65: 1955–1972
- Pribil M, Pesaresi P, Hertle A, Barbato R, Leister D (2010) Role of plastid protein phosphatase TAP38 in LHClI dephosphorylation and thylakoid electron flow. *PLoS Biol* 8: e1000288
- Qin X, Pi X, Wang W, Han G, Zhu L, Liu M, Cheng L, Shen JR, Kuang T, Sui SF (2019) Structure of a green algal photosystem I in complex with a large number of light-harvesting complex I subunits. *Nat Plants* 5: 263–272
- Qin X, Suga M, Kuang T, Shen JR (2015) Structural basis for energy transfer pathways in the plant PSI-LHCI supercomplex. *Science* 348: 989–995
- Le Quiniou C, Tian L, Drop B, Wientjes E, Van Stokkum IHM, Van Oort B, Croce R (2015) PSI-LHCI of *Chlamydomonas reinhardtii*: Increasing the absorption cross section without losing efficiency. *Biochim Biophys Acta - Bioenerg* 1847: 458–467
- Rakhimberdieva MG, Elanskaya IV, Vermaas WFJ, Karapetyan NV (2010) Carotenoid-triggered energy dissipation in phycobilisomes of *Synechocystis* sp. PCC 6803 diverts excitation away from reaction centers of both photosystems. *Biochim Biophys Acta-Bioenerg* 1797: 241–249
- Ranjbar Choubeh R, Bar-Eyal L, Paltiel Y, Keren N, Struik PC, van Amerongen H (2020) Photosystem II core quenching in desiccated *Leptolyngbya ohadii*. *Photosynth Res* 143: 13–18
- Rast A, Schaffer M, Albert S, Wan W, Pfeffer S, Beck F, Plitzko JM, Nickelsen J, Engel BD (2019) Biogenic regions of cyanobacterial thylakoids form contact sites with the plasma membrane. *Nat Plants* 5: 436–446
- Röding A, Boekema E, Büchel C (2018) The structure of FCPb, a light-harvesting complex in the diatom *Cyclotella meneghiniana*. *Photosynth Res* 135: 203–211
- Ruban AV, Berera R, Iliaoaia C, van Stokkum IHM, Kennis JTM, Pascal AA, van Amerongen H, Robert B, Horton P, van Grondelle R (2007) Identification of a mechanism of photoprotective energy dissipation in higher plants. *Nature* 450: 575–578
- Ruban AV, Johnson MP (2010) Xanthophylls as modulators of membrane protein function. *Arch Biochem Biophys* 504: 78–85

- Ruban AV (2016) Nonphotochemical chlorophyll fluorescence quenching: mechanism and effectiveness in protecting plants from photodamage. *Plant Physiol* **170**: 1903–16
- Ruban AV, Wilson S (2020) The mechanism of non-photochemical quenching in plants: localization and driving forces. *Plant Cell Physiol* **62**: 1–10
- Ruiz J, Olivieri G, De Vree J, Bosma R, Willems P, Reith JH, Eppink MHM, Kleinegris DMM, Wijffels RH, Barbosa MJ (2016) Towards industrial products from microalgae. *Energy Environ Sci* **9**: 3036–3043
- Rumak I, Mazur R, Gieczewska K, Koziol-Lipińska J, Kierdaszuk B, Michalski WP, Shiell BJ, Venema JH, Vredenberg WJ, Mostowska A, et al. (2012) Correlation between spatial (3D) structure of pea and bean thylakoid membranes and arrangement of chlorophyll-protein complexes. *BMC Plant Biol* **12**: 1–18
- Saccon F, Durchan M, Bina D, Duffy CDP, Ruban AV, Polívka T (2020a) A protein environment-modulated energy dissipation channel in LHCII antenna complex. *iScience* **23**: 101430
- Saccon F, Durchan M, Polívka T, Ruban AV. (2020b) The robustness of the terminal emitter site in major LHCII complexes controls xanthophyll function during photoprotection. *Photochem Photobiol Sci* **19**: 1308–1318
- Saccon F, Giovagnetti V, Shukla MK, Ruban AV (2020c) Rapid regulation of photosynthetic light harvesting in the absence of minor antenna and reaction centre complexes. *J Exp Bot* **71**: 3626–3637
- Sacharz J, Giovagnetti V, Ungerer P, Mastroianni G, Ruban AV (2017) The xanthophyll cycle affects reversible interactions between PsbS and light-harvesting complex II to control non-photochemical quenching. *Nat Plants* **3**: 16225
- Scott M, McCollum C, Vasil'ev S, Crozier C, Espie GS, Krol M, Huner NPA, Bruce D (2006) Mechanism of the down regulation of photosynthesis by blue light in the cyanobacterium *Synechocystis* sp. PCC 6803. *Biochemistry* **45**: 8952–8958
- Selo TT, Zhang L, Knoppová J, Komenda J, Norling B (2016) Photosystem II assembly steps take place in the thylakoid membrane of the cyanobacterium *Synechocystis* sp. PCC6803. *Plant Cell Physiol* **57**: 95–104
- Shapiguzov A, Ingelsson B, Samol I, Andres C, Kessler F, Rochaiz J-D, Vener AV, Goldschmidt-Clermont M (2010) The PPH1 phosphatase is specifically involved in LHCII dephosphorylation and state transitions in *Arabidopsis*. *Proc Natl Acad Sci USA* **107**: 4782–4787
- Shen L, Huang Z, Chang S, Wang W, Wang J, Kuang T, Han G, Shen JR, Zhang X (2019) Structure of a C2S2M2N2-type PSII-LHCII supercomplex from the green alga *Chlamydomonas reinhardtii*. *Proc Natl Acad Sci USA* **116**: 21246–21255
- Sheng X, Watanabe A, Li A, Kim E, Song C, Murata K, Song D, Minagawa J, Liu Z (2019) Structural insight into light harvesting for photosystem II in green algae. *Nat Plants* **5**: 1320–1330
- Simkin AJ, López-Calcano PE, Raines CA (2019) Feeding the world: Improving photosynthetic efficiency for sustainable crop production. *J Exp Bot* **70**: 1119–1140
- Slattery RA, Walker BJ, Weber APM, Ort DR (2018) The impacts of fluctuating light on crop performance. *Plant Physiol* **176**: 990–1003
- Slonimskiy YB, Slonimskiy YB, Maksimov EG, Maksimov EG, Sluchanko NN, Sluchanko NN (2020) Fluorescence recovery protein: a powerful yet underexplored regulator of photoprotection in cyanobacteria. *Photochem Photobiol Sci* **19**: 763–775
- Son M, Pinnola A, Gordon SC, Bassi R, Schlau-Cohen GS (2020a) Observation of dissipative chlorophyll-to-carotenoid energy transfer in light-harvesting complex II in membrane nanodiscs. *Nat Commun* **11**: 1295
- Son M, Pinnola A, Schlau-Cohen GS (2020b) Zeaxanthin independence of photophysics in light-harvesting complex II in a membrane environment. *Biochim Biophys Acta-Bioenerg* **1861**: 148115
- Steinbeck J, Ross I, Rothnagel R, Gäbelein P, Schulze S, Giles N, Ali R, Drysdale R, Sierrecki E, Gambin Y, et al. (2018) Structure of a PSI-LHCI-cyt b6f supercomplex in *Chlamydomonas reinhardtii* promoting cyclic electron flow under anaerobic conditions. *Proc Natl Acad Sci USA* **115**: 10517–10522
- Su X, Ma J, Wei X, Cao P, Zhu D, Chang W, Liu Z, Zhang X, Li M (2017) Structure and assembly mechanism of plant C2S2M2-type PSII-LHCII supercomplex. *Science* **357**: 815–820
- Taddei L, Chukhutsina VU, Lepetit B, Stella GR, Bassi R, van Amerongen H, Bouly JP, Jaubert M, Finazzi G, Falcatore A (2018) Dynamic changes between two LHCX-related energy quenching sites control diatom photoacclimation. *Plant Physiol* **177**: 953–965
- Tauschel HD, Drews G (1967) Thylakoidmorphogenese bei *Rhodospseudomonas palustris*. *Arch Mikrobiol* **59**: 381–404
- Tian L, Nawrocki WJ, Liu X, Polukhina I, van Stokkum IHM, Croce R (2019) pH dependence, kinetics and light-harvesting regulation of nonphotochemical quenching in *Chlamydomonas*. *Proc Natl Acad Sci USA* **116**: 8320–8325
- Tian L, Van Stokkum IHM, Koehorst RBM, Jongerijs A, Kirilovsky D, Van Amerongen H (2011) Site, rate, and mechanism of photoprotective quenching in cyanobacteria. *J Am Chem Soc* **133**: 18304–18311
- Townsend AJ, Saccon F, Giovagnetti V, Wilson S, Ungerer P, Ruban AV (2018) The causes of altered chlorophyll fluorescence quenching induction in the *Arabidopsis* mutant lacking all minor antenna complexes. *Biochim Biophys Acta-Bioenerg* **1859**: 666–675
- Turk M, Baumeister W (2020) The promise and the challenges of cryo-electron tomography. *FEBS Lett* **594**: 3243–3261
- Tutkus M, Saccon F, Chmeliov J, Venckus O, Ciplys I, Ruban AV, Valkunas L (2019) Single-molecule microscopy studies of LHCII enriched in *Vio* or *Zea*. *Biochim Biophys Acta-Bioenerg* **1860**: 499–507
- Umena Y, Kawakami K, Shen J-RR, Kamiya N (2011) Crystal structure of oxygen-evolving photosystem II at a resolution of 1.9 Å. *Nature* **473**: 55
- Ünlü C, Drop B, Croce R, van Amerongen H (2014) State transitions in *Chlamydomonas reinhardtii* strongly modulate the functional size of photosystem II but not of photosystem I. *Proc Natl Acad Sci USA* **111**: 3460–3465
- Van Bezouwen LS, Caffarri S, Kale R, Kouril R, Thunnissen AMWH, Oostergetel GT, Boekema EJ (2017) Subunit and chlorophyll organization of the plant photosystem II supercomplex. *Nat Plants* **3**: 1–11
- van den Berg TE, Arshad R, Nawrocki WJ, Boekema EJ, Kouril R, Croce R (2020) PSI of the colonial alga *Botryococcus braunii* has an unusually large antenna size. *Plant Physiol* **184**: 2040–2051
- Vener AV (2007) Environmentally modulated phosphorylation and dynamics of proteins in photosynthetic membranes. *Biochim Biophys Acta* **1767**: 449–457
- Vener AV, Van Kan PJM, Gal A, Andersson B, Ohad I (1995) Activation/deactivation cycle of redox-controlled thylakoid protein phosphorylation. Role of plastoquinol bound to the reduce cytochrome b6 complex. *J Biol Chem* **270**: 25225–25232
- Verhoeven A (2014) Sustained energy dissipation in winter evergreens. *New Phytol* **201**: 57–65
- Wang W, Yu L-J, Xu C, Tomizaki T, Zhao S, Umena Y, Chen X, Qin X, Xin Y, Suga M, et al. (2021) Structural basis for blue-green light harvesting and energy dissipation in diatoms. *Science* **363**: eaav0365
- Weis BL, Schleiff E, Zerges W (2013) Protein targeting to subcellular organelles via mRNA localization. *Biochim Biophys Acta-Mol Cell Res* **1833**: 260–273
- Wientjes E, Van Amerongen H, Croce R (2013) Quantum yield of charge separation in photosystem II: functional effect of changes in the antenna size upon light acclimation. *J Phys Chem B* **117**: 11200–11208
- Wientjes E, Philippi J, Borst JW, van Amerongen H (2017) Imaging the Photosystem I/Photosystem II chlorophyll ratio inside the leaf. *Biochim Biophys Acta-Bioenerg* **1858**: 259–265

- Wietrzynski W, Schaffer M, Tegunov D, Albert S, Kanazawa A, Plitzko JM, Baumeister W, Engel BD** (2020) Charting the native architecture of *Chlamydomonas* thylakoid membranes with single-molecule precision. *eLife* **9**: e53740
- Wilk L, Grunwald M, Liao P-N, Walla PJ, Kuhlbrandt W** (2013) Direct interaction of the major light-harvesting complex II and PsbS in non-photochemical quenching. *Proc Natl Acad Sci USA* **110**: 5452–5456
- Wollman FA, Lemaire C** (1988) Studies on kinase-controlled state transitions in Photosystem II and b6f mutants from *Chlamydomonas reinhardtii* which lack quinone-binding proteins. *Biochim Biophys Acta-Bioenerg* **933**: 85–94
- Wood WHJ, Barnett SFH, Flannery S, Hunter CN, Johnson MP** (2019) Dynamic thylakoid stacking is regulated by LHCII phosphorylation but not its interaction with PSI. *Plant Physiol* **180**: 2152–2166
- Wood WHJ, MacGregor-Chatwin C, Barnett SFH, Mayneord GE, Huang X, Hobbs JK, Hunter CN, Johnson MP** (2018) Dynamic thylakoid stacking regulates the balance between linear and cyclic photosynthetic electron transfer. *Nat Plants* **4**: 116–127
- Xu C, Pi X, Huang Y, Han G, Chen X, Qin X, Huang G, Zhao S, Yang Y, Kuang T, et al.** (2020) Structural basis for energy transfer in a huge diatom PSI-FCPI supercomplex. *Nat Commun* **11**: 5081
- Xu P, Tian L, Kloz M, Croce R** (2015) Molecular insights into Zeaxanthin-dependent quenching in higher plants. *Sci Rep* **5**: 13679
- Yadav KNS, Semchonok DA, Nosek L, Kouril R, Fucile G, Boekema EJ, Eichacker LA** (2017) Supercomplexes of plant photosystem I with cytochrome b6f, light-harvesting complex II and NDH. *Biochim Biophys Acta-Bioenerg* **1858**: 12–20
- Zak E, Norling B, Maitra R, Huang F, Andersson B, Pakrasi HB** (2001) The initial steps of biogenesis of cyanobacterial photosystems occur in plasma membranes. *Proc Natl Acad Sci USA* **98**: 13443–13448
- Zhang J, Ma J, Liu D, Qin S, Sun S, Zhao J, Sui SF** (2017) Structure of phycobilisome from the red alga *Griffithsia pacifica*. *Nature* **551**: 57–63