


## Article

# Increased Expression and Altered Cellular Localization of Fibroblast Growth Factor Receptor-Like 1 (FGFRL1) Are Associated with Prostate Cancer Progression

Lan Yu <sup>1,†</sup>, Mervi Toriseva <sup>1,‡</sup>, Syeda Afshan <sup>1,‡</sup>, Mario Cangiano <sup>2</sup>, Vidal Fey <sup>1,§</sup>, Andrew Erickson <sup>3</sup>, Heikki Seikkula <sup>4,||</sup>, Kalle Alanen <sup>5</sup>, Pekka Taimen <sup>1,5</sup>, Otto Ettala <sup>4</sup>, Martti Nurmi <sup>4</sup>, Peter J. Boström <sup>4</sup>, Markku Kallajoki <sup>5</sup>, Johanna Tuomela <sup>1,¶</sup>, Tuomas Mirtti <sup>6</sup>, Inès J. Beumer <sup>2</sup>, Matthias Nees <sup>1,7</sup> and Pirkko Härkönen <sup>1,\*</sup>

<sup>1</sup> Institute of Biomedicine and FICAN West Cancer Centre, University of Turku and Turku University Hospital, 20520 Turku, Finland; yulan@zzu.edu.cn (L.Y.); mertor@utu.fi (M.T.); syeda.afshan@utu.fi (S.A.); vidal.fey@tuni.fi (V.F.); pepeta@utu.fi (P.T.); matthias.nees@utu.fi (M.N.)

<sup>2</sup> GenomeScan, 2333 BZ Leiden, The Netherlands; mario.cangiano@biogemcampus.com (M.C.); i.beumer@genomescan.nl (I.J.B.)

<sup>3</sup> Nuffield Department of Surgical Sciences, University of Oxford, Oxford OX3 9DU, UK; andrew.erickson@helsinki.fi

<sup>4</sup> Department of Urology, University of Turku and Turku University Hospital, 20520 Turku, Finland; heikki.seikkula@ksshp.fi (H.S.); otto.ettala@tyks.fi (O.E.); Martti.nurmi@fimnet.fi (M.N.); peter.j.bostrom@gmail.com (P.J.B.)

<sup>5</sup> Department of Pathology, Turku University Hospital, 20520 Turku, Finland; kalle.a.alanen@gmail.com (K.A.); markku.kallajoki@tyks.fi (M.K.)

<sup>6</sup> HUS Diagnostic Center and Research Program in Systems Oncology (ONCOSYS), Helsinki University Hospital and University of Helsinki, 00014 Helsinki, Finland; tuomas.mirtti@helsinki.fi

<sup>7</sup> Department of Biochemistry and Molecular Biology, Medical University in Lublin, 20-093 Lublin, Poland

\* Correspondence: harkonen@utu.fi; Tel.: +358-40-7343520

† Current address: Henan Provincial People's Hospital, Henan Provincial Reproductive Hospital, People's Hospital of Zhengzhou University, Zhengzhou 450003, China.

‡ These authors contributed equally to this work.

§ Current address: Computational Biology, Faculty of Medicine and Health Technology, Tampere University, 33014 Tampere, Finland.

|| Current address: Department of Surgery, Central Finland Central Hospital, 40620 Jyväskylä, Finland.

¶ Deceased.



**Citation:** Yu, L.; Toriseva, M.; Afshan, S.; Cangiano, M.; Fey, V.; Erickson, A.; Seikkula, H.; Alanen, K.; Taimen, P.; Ettala, O.; et al. Increased Expression and Altered Cellular Localization of Fibroblast Growth Factor Receptor-Like 1 (FGFRL1) Are Associated with Prostate Cancer Progression. *Cancers* **2022**, *14*, 278. <https://doi.org/10.3390/cancers14020278>

Academic Editor: Constantin N. Baxevanis

Received: 25 November 2021

Accepted: 29 December 2021

Published: 7 January 2022

**Publisher's Note:** MDPI stays neutral with regard to jurisdictional claims in published maps and institutional affiliations.



**Copyright:** © 2022 by the authors. Licensee MDPI, Basel, Switzerland. This article is an open access article distributed under the terms and conditions of the Creative Commons Attribution (CC BY) license (<https://creativecommons.org/licenses/by/4.0/>).

**Simple Summary:** Prostate cancer (PCa) is one of the most frequently diagnosed malignancies in men. PCa is primarily regulated by androgens, but other mechanisms, such as fibroblast growth factor receptor (FGFR) signaling, are also involved. In some patients, PCa relapses after surgical removal of prostate, and androgen deprivation therapy (ADT) is used as the first-line treatment. Unfortunately, the patients often lose response to ADT and progress by other mechanisms to castration-resistant, currently non-curable PCa. In our study, we aimed to identify better diagnostic markers and therapeutic targets against PCa. We analyzed patient PCa tissue samples from radical prostatectomies and biopsies, and used physiologically relevant 3D organoids and mouse xenografts to study FGFR signaling in PCa. We found that FGFRL1, a protein belonging to the FGFR family, plays a role in PCa. Our results suggest that FGFRL1 has significant effects on PCa progression and has potential as a prognostic biomarker.

**Abstract:** Fibroblast growth factor receptors (FGFRs) 1–4 are involved in prostate cancer (PCa) regulation, but the role of FGFR-like 1 (FGFRL1) in PCa is unclear. FGFRL1 expression was studied by qRT-PCR and immunohistochemistry of patient tissue microarrays (TMAs) and correlated with clinical patient data. The effects of FGFRL1 knockdown (KD) in PC3M were studied in in vitro culture models and in mouse xenograft tumors. Our results showed that FGFRL1 was significantly upregulated in PCa. The level of membranous FGFRL1 was negatively associated with high Gleason scores (GSs) and Ki67, while increased cytoplasmic and nuclear FGFRL1 showed a positive correlation. Cox regression analysis indicated that nuclear FGFRL1 was an independent prognostic marker for

biochemical recurrence after radical prostatectomy. Functional studies indicated that FGFR1-KD in PC3M cells increases FGFR signaling, whereas FGFR1 overexpression attenuates it, supporting decoy receptor actions of membrane-localized FGFR1. In accordance with clinical data, FGFR1-KD markedly suppressed PC3M xenograft growth. Transcriptomics of FGFR1-KD cells and xenografts revealed major changes in genes regulating differentiation, ECM turnover, and tumor–stromal interactions associated with decreased growth in FGFR1-KD xenografts. Our results suggest that FGFR1 upregulation and altered cellular compartmentalization contribute to PCa progression. The nuclear FGFR1 could serve as a prognostic marker for PCa patients.

**Keywords:** prostate cancer; FGFR1 (FGFR5); FGFR signaling; tumor–stromal interactions; biochemical recurrence; prostate cancer progression

## 1. Introduction

Prostate cancer (PCa) is one of the most frequently diagnosed malignancies in men, with an estimated 1.3 million new cases worldwide in 2018 [1]. Radical prostatectomy (RP) is an effective treatment for patients with localized PCa, typically supporting long-term progression-free survival; however, around 30% of PCa patients relapse within 10 years. PCa is regulated by androgens and androgen receptor (AR), which is the basis for the treatment of relapsed patients with androgen deprivation therapy (ADT). Over 20% of these patients develop aggressive castration-resistant prostate cancer (CRPC) and fail to benefit from ADT. The mechanisms leading to CRPC are not fully understood, and reliable prognostic markers and effective treatments are currently unknown [2].

Other mechanisms, including fibroblast growth factors (FGFs) and fibroblast growth factor receptors (FGFRs), also participate in PCa development and progression [3–6]. FGFs, FGFRs, and downstream signaling pathways regulate various cellular functions, such as proliferation, differentiation, morphogenesis, apoptosis, migration, and angiogenesis [3,4,7,8]. The primary feature of FGF/FGFR actions is the control of reciprocal signaling between epithelial and stromal compartments in developmental processes, organ homeostasis, angiogenesis, and the repair of wounded and damaged tissues [4,5]. Increased oncogenic signaling of the FGF/FGFR pathways by activating gene mutations, amplifications, and fusions; overexpression of FGFR protein; or altered FGF ligand production and autocrine/paracrine signaling may be involved in the initiation and progression of different types of cancer, including PCa [3,4,7,9–13].

FGFR1 is the fifth and most recently identified FGFR [14]. Its extracellular domain is very similar to FGFR1-4 and binds FGFs, such as FGF-2 and FGF-8, with high affinity. In contrast to FGFR1-4, the intracellular tyrosine kinase domain of FGFR1 is replaced by a short histidine-rich C-terminal tail, which is unable to convey canonical signal transduction through receptor auto-phosphorylation [14]. *Fgfr1*-deficient mice die at birth and show multiple congenital malformations, such as hypoplastic diaphragms or dysfunctional metanephric kidneys [15,16]. Mice lacking the FGFR1 intracellular domain are viable and develop normally. This domain may regulate the turnover of the FGFR1 extracellular domain [15]. It also binds to SHP-1 phosphatase in pancreatic islet beta cells, which may affect cellular signaling [17] and negatively acting Spread 1, a member of the Sprouty/Spread family [18]. Due to a truncated intracellular domain, FGFR1 was originally assumed to primarily act as a decoy receptor for FGF ligands [19,20]. However, later studies have also suggested other mechanisms, such as the function of FGF8-bound FGFR1 as a coreceptor via FGFR1 in the regulation of nephron development [21].

FGFR1 is widely expressed in human tissues [15,22]. In mesenchymal cells, FGFR1 inhibits cell proliferation [22], is associated with cell differentiation [22,23], and induces cell adhesion [24,25]. Increased expression of FGFR1 in ovarian cancers [26] correlates with poor prognoses for ovarian cancer patients [27]. In esophageal squamous cell carcinoma (ESCC) cells, FGFR1 deficiency decreases tumor growth in xenografts [28], and

its expression is increased in clinical ESCC tumors [29]. In addition to altered expression, genetic deletions and mutations have been demonstrated in bladder and colon cancer, respectively [30,31].

Little is known about FGFR1 in PCa, although FGF/FGFR pathways have an established role in prostate development and functioning [4,5,7,8,10]. In this study, we analyzed FGFR1 expression in PCa using publicly available mRNA gene expression data sets and examined mRNA levels and protein expression in benign prostate and PCa tissue samples from radical prostatectomies and biopsies of PCa patients in our study cohorts. Immunohistochemically detected FGFR1 protein expression and cellular localization in TMAs were scored and correlated with clinicopathological parameters and patient follow-up data (time to BCR). The functions of FGFR1 were studied using PC3M KD cell models with control cell lines in 2D and 3D cultures and xenografts. The gene expression profiles of FGFR1-KD cell lines and xenografts compared to controls were studied with RNA-seq analyses.

## 2. Materials and Methods

### 2.1. Gene Expression Database Mining

Expression and correlation data for FGFR1 were extracted from a clinical transcriptome study (MSKCC 2010) [32], available through the cBioPortal database (<http://www.cbioportal.org/public-portal>, 1 April 2017) [33]. The database contains 218 clinical PCa samples and metastases, cell lines, and normal prostate tissues [32]. The mRNA gene expression data were extracted, normalized, and analyzed using an in-house HTML interface (REX) with R/bioconductor-based algorithms. Associations of median-centered gene expression patterns with clinical annotations (grades, GSs, and TNM staging) and selected clinicopathological features (e.g., extracapsular invasion) were analyzed and plotted using R/bioconductor-based algorithms. Additionally, the Medisapiens IST data sets for multiple PCa studies were analyzed and plotted in a similar manner [34].

### 2.2. Patient Data and Tissue Microarray (TMA) Construction

Primary PCa samples from patients undergoing RP and pelvic lymph node dissection, and biopsy samples from locally invasive and metastatic advanced prostate cancer (AdvPCa) tumors, were collected between 1993 and 2011 at the Turku University Hospital TYKS [35]. Transurethral resections of prostate specimens were searched in the Helsinki University Hospital pathology archive for 2007–2011. Additionally, nonmalignant prostate tissue samples from patients undergoing surgery for benign prostatic hyperplasia (BPH) were included in the study. Fresh samples of primary PCa and nonmalignant adjacent prostate (AdjPr) tissues were frozen for RNA extraction. Parallel samples were fixed in formalin, embedded in paraffin, and sectioned for histopathological analysis. Biopsy samples from AdvPCa and BPH were processed similarly for histopathology and screened to determine their CRPC statuses. Clinical pathologists (T.M., K.A., M.K., or P.T.) examined all the H&E-stained sections and confirmed the Gleason score (GS) [36,37] of the PCa sample areas and the CRPC statuses of the transurethral resection specimens used for constructing the following TMAs.

TMA I comprised BPH ( $n = 5$ ) nonmalignant tissues adjacent to AdjPr ( $n = 189$ ) and high-grade prostatic intraepithelial neoplasia (HGPIN) ( $n = 35$ ) tissues, and primary PCa tissues from patient samples of sufficient size and in proportions of PCa > 50% of the sample area ( $n = 144$ ) [35].

TMA II comprised 62 biopsies from 36 patients with AdvPCa (19 with seminal vesicle invasion, 35 with pelvic lymph node metastasis, 4 with bone metastasis, and 4 with distant tissue metastasis).

TMA III comprised transurethral resection samples from CRPC patients ( $n = 21$ ).

The TMA blocks were constructed as described by Yu et al. [35]. The sectioning of the TMA blocks, immunostaining of FGFR1 and Ki67, and evaluation and scoring of the membranous, cytoplasmic, and nuclear immunostaining for FGFR1 are described in the Supplementary Materials and Methods file.

### 2.3. Collection and Statistical Analysis of Clinical Data

The inclusion criterion for the statistical analysis of clinical data and immunohistochemical (IHC) staining of primary PCa for 139 patients was the availability of complete clinicopathological data, including prostate-specific antigen (PSA) follow-up data. The exclusion criteria for the patients included in the analysis of BCR-free survival time were neoadjuvant and adjuvant treatments. The analyses were performed using SPSS software, v22 (SPSS), IBM Corporation, Armonk, NY, USA. Mann–Whitney U and *t*-tests were used to compare differences between the two sample groups. Kruskal–Wallis and Dunn’s multiple comparison tests were applied to compare more than two groups. Wilcoxon matched-pairs signed-rank tests were used to compare paired samples (GS  $\geq 4 + 3$ , PSA  $\geq 10$  ng/mL, pTNM  $\geq$  T3a). Positive surgical margins (PSMs) were considered intermediate-to-high risk factors, and patient subgroups were formed according to these criteria. FGFR1 staining patterns were categorized as either FGFR1 low or FGFR1 high, based on the mean IHC scores for the cell membrane, cytoplasmic, and nuclear FGFR1 staining (37, 90, and 9, respectively), as described in the Supplementary Materials and Methods. The association between FGFR1 expression and clinicopathological parameters was analyzed using an  $\chi^2$  test; correlations between the FGFR1 IHC and GSs, and the pre-operative PSA and Ki67 IHC scores, were determined using a Spearman’s correlation test. Kaplan–Meier survival analysis was conducted to study the time to biochemical recurrence (BCR), defined as two consecutive postoperative serum PSA values  $\geq 0.2$  ng/mL, with the first being the date of BCR. Comparison of two Kaplan–Meier curves was performed using a log-rank test. Cox PH univariate and multivariate regression analyses were used to determine the relationship between clinicopathological parameters and BCR-free survival time. A *p*-value  $\leq 0.05$  was considered statistically significant.

### 2.4. Cell Culture and Treatments

PC-3, LNCaP, VCaP, DU145, and NCI-H660 prostate cancer cell lines and benign PNT1a prostate epithelial cells were obtained from the American Type Culture Collection (ATCC) and the PC3M cell line was obtained from Caliper Life Sciences. PC-3 (RRID:CVCL\_0035), PC3M (RRID:CVCL\_9555), and DU145 (RRID:CVCL\_0105) cells were cultured in DMEM (Gibco, Thermo Fisher, Paisley, Scotland, UK), containing 10% fetal bovine serum (FBS, Gibco, Thermo Fisher, Paisley, Scotland, UK) and 1% antibiotics (Lonza, Verviers, Belgium). PNT1a (RRID:CVCL\_2163), LNCaP (RRID:CVCL\_0395), and VCaP (RRID:CVCL\_2235) cells were cultured in RPMI medium (Gibco, Thermo Fisher, Paisley, Scotland, UK) with 10% FBS, 2 mM GlutaMAX (Gibco, Thermo-Fisher, Paisley, Scotland, UK), and 1% antibiotics. NCI-H660 (RRID:CVCL\_1576) prostate cancer cell line was cultured in RPMI medium with 5% FBS, 5.5 mg/mL transferrin (Sigma Aldrich, Saint Louis, MO, USA), 10 mg/mL insulin (Gibco, 12585-014, Paisley, UK), 10 nM hydrocortisone (Sigma Aldrich, Saint Louis, MO, USA), 10 ng/mL sodium selenite (Sigma Aldrich, Saint Louis, MO, USA) (40 nM), EGF (R&D systems, Minneapolis, MN, USA), 10 nM beta-estradiol (Sigma Aldrich, Saint Louis, MO, USA), 2 mM GlutaMax and 1% antibiotics. All cell cultures were maintained in a humidified incubator at 37 °C with 5% CO<sub>2</sub>. All human cell lines used in this study have been authenticated using short tandem repeat profiling within the last three years at IdentiCell Laboratories (Department of Molecular Medicine at Aarhus University Hospital Skejby, Århus, Denmark) and at the Institute of Molecular Medicine (FIMM), University of Helsinki, Finland. All experiments were performed with mycoplasma-free cells (Lonza LT07-118 mycoplasma detection kit). In cell signaling studies, cells were serum-starved in 0.1% bovine serum albumin (BSA, Sigma Aldrich, Saint Louis, MO, USA) for 24 h, and then treated with 25 ng/mL recombinant FGF8b (R&D systems, Minneapolis, MN, USA) or 25 ng/mL FGF2 (R&D systems, Minneapolis, MN, USA), along with 20 UI/mL heparin (Sigma Aldrich, Saint Louis, MO, USA). In addition, serum-starved PC3M cells were first treated with FGFR inhibitors BGJ398 or AZD4547, or MEK inhibitor PD98059 (Selleck Chemicals LLC, TX, USA) for 30 min; thereafter, FGF was added and cell lysates were harvested after 10 min.

### 2.5. FGFR1 Knockdown and Overexpression in PC3M Cells

FGFR1-shRNA plasmid (sc39967-SH) and control shRNA plasmid (sc108066) were purchased from Santa Cruz Biotechnology Inc., TX, USA. For the overexpression studies, a human full-length FGFR1 sequence for amino acid residue 1–504 (plasmid #23600, Addgene Europe, Teddington, UK) was amplified using PCR and inserted into the EcoRI/BamHI site of the expression vector pEGFP-C2, and then tagged with EGFP. The construct was verified by restriction digestion and sequencing, transfected into PC3M cells using Lipofectamine™ 2000 (Thermo Fisher Scientific, Carlsbad, CA, USA), and stable transfected clones were selected using 6 µg/mL puromycin (Thermo Fisher, Paisley, Scotland, UK). Clones were examined for FGFR1 protein knockdown (KD) or overexpression using Western blotting. This study used two PC3M control-KD clones (sh5 and sh8) and two PC3M FGFR1-KD clones (sh9 and sh11). FGFR1-KD in VCaP and LNCaP cells produced by siRNA and CRISPR-cas9 techniques failed, probably due to the essential nature of the target gene in these cells, resulting in poor cell viability.

### 2.6. Western Blotting

Western blot was used to detect protein expression levels in cell lysates and xenograft tissue lysates. The procedures and antibodies used are described in the Supplementary Materials and Methods. Uncropped Western blot images are presented in Figure S1.

### 2.7. RNA Isolation and Quantitative Real-Time PCR (qRT-PCR)

Total RNA was extracted from fresh frozen primary PCa and AdjPr tissue samples and cell cultures using an RNeasy Mini Kit (Qiagen, Hilden, Germany). Only patient tissue specimens with >50% carcinoma or benign glands, based on H&E staining, were used. Here, 1 µg of total RNA was transcribed into complementary DNA (cDNA) using Maxima reverse transcriptase (Thermo Fisher Scientific, Helsinki/Finland), RNA inhibitor (Promega, Fitchburg WI, USA), dNTP mix (Thermo Fisher Scientific, Helsinki/Finland), and Oligo dT primer (Oligomer Oy, Helsinki, Finland). qRT-PCR was performed using SYBR™ Green master mix (Thermo Scientific, Vilnius, Lithuania) with a Bio-Rad CFX96 Touch™ system, Bio-Rad Laboratories Oy, Helsinki, Finland. Primers for amplification of FGFR1 (F: 5'-CCATGTGGACCAAGGATGGC-3', R: 5'-CTAATGTTCATCCAGCAGCAGC-3'); PTX3 (R: 5'-AGC ACT CGG AAT GGG ACA AG-3', R: 5'-TAG CCG CCA GTT CAC CAT TT-3'); and FZD7 (R: 5'-GGT GCA GTG TTC TCC CGA A-3', R: 5'-CAT GAA GTA GCA GCC CGA CA-3') were designed based on the NCBI databases (<http://www.ncbi.nlm.nih.gov/tools/primer-blast/>, 17 February 2019). The threshold cycles were determined and the standard  $\Delta\Delta C_t$  method was used to calculate fold-change differences in mRNA expression. Expression levels of FGFR1 were normalized to the TBP gene as a housekeeping standard (F: 5'-GAATATCCCAAGCGGTTT-3', R: 5'-ACTTCACATCACAGCTCCCC-3').

### 2.8. Cell Proliferation and Migration Assays

PC3M cells were seeded on a 96-well plate (5000 cells/well) in full-growth medium and imaged every 2 h with an Incucyte® ZOOM imaging system (Essen BioScience, Royston Hertfordshire, UK) in an incubator at 37 °C and 5% CO<sub>2</sub>. Proliferation was monitored for four days, and kinetic image data were analyzed with Incucyte® ZOOM software (Essen BioScience, Royston Hertfordshire, UK). Cell migration was examined using scratch wound assays and an Incucyte® S3 imager device (Sartorius, Goettingen, Germany) according to the manufacturer's instructions. Briefly, scratch wounds were generated in confluent cell layers on 96-well Imagelock plates with the "wound-maker" tool. Two images per well (10x objective, Sartorius, Goettingen, Germany) were collected every 2 h. The percentage of cell migration leading to wound confluence was analyzed with Incucyte® S3 software (Sartorius Stedim Biotech, Goettingen, Germany). To examine the effects of the FGFR inhibitors BGJ398 and AZD4547 on cell proliferation or migration, the inhibitors were applied to cells one day after plating or at the time of wounding, respectively. The data

were graphically presented using GraphPad Prism 8 software (GraphPad Software Inc., San Diego, CA, USA).

### 2.9. Organotypic 3D Culture

Organotypic 3D cell culturing was performed as described earlier [38]. Briefly, PC3M ctrl-KD and FGFR1-KD clone 11 were seeded as single cells between two layers of Matrigel (Corning/BD Biosciences, Glendale, Arizona, USA) in the presence of 5% FBS-DMEM on 96-well angiogenesis  $\mu$ -plates (Ibidi, Gräfelfing, Germany). The cells were allowed to form multicellular organoids for up to 12 days. FGFR inhibitors BGJ398 and AZD4547 were added on day four (1  $\mu$ M, 5  $\mu$ M, and 10  $\mu$ M) and incubated for an additional eight days. The cultures were monitored using an Incucyte<sup>®</sup> ZOOM real-time imaging device (Essen BioScience, Royston Hertfordshire, UK). Finally, organoids were stained with calcein AM and EthD1 dyes (Thermo Fisher Scientific, Carlsbad, CA, USA) to visualize living and dead cells, respectively, and imaged with a spinning disk confocal microscope (Zeiss Axiovert 200 M, Zeiss, Oberkochen, Germany, 5x objective). Images were converted to maximum-intensity projections with SlideBook6 software (3i Intelligent Imaging Innovations Inc., Denver, CO, USA) and analyzed using our in-house AMIDA software [39]. The resulting quantitative morphometric data were visualized and plotted using the R software environment (<http://www.r-project.org>, 16 October 2018).

### 2.10. Mouse Xenografts

Five-week-old male athymic nu/nu mice (Harlan Laboratories, Horst, The Netherlands) were used in the study. The mice (first experiment  $n = 12$ , second experiment  $n = 20$ ) were randomized into two groups for subcutaneous inoculation with either control-KD (clone 8) or FGFR1 KD-11 (clone 11) PC3M cells. Cells were collected at the log growth phase and subcutaneously injected into mice ( $1 \times 10^6$  cells in 100  $\mu$ L of PBS). Mice were housed under controlled conditions (12 h light/12 h dark cycles, temperature  $21 \pm 3$  °C) and fed standard chew food and tap water ad libitum. Tumors were grown for 45 days, and the tumor sizes and body weights of mice were measured every five days. After sacrificing the mice with CO<sub>2</sub> asphyxiation followed by cervical dislocation, tumors were excised and divided into two parts: one for fixation with 10% neutral-buffered formalin, and another for protein and RNA expression analysis. Xenograft tissues were analyzed with H&E staining and immunostaining to examine key processes in cancer tissues (see Supplementary Materials and Methods).

### 2.11. RNA Sequencing and Data Analysis

Total RNA was harvested from PC3M ctrl-KD cells (clones 5 and 8, each in two replicates) and PC3M FGFR1-KD cells (clone 11, two replicates) and from xenograft tumors (ctrl-KD,  $n = 5$ ; FGFR1-KD-11,  $n = 5$ ) as described above. Differentially expressed gene sets (FGFR1-KD vs. ctrl-KD) were further analyzed by bioinformatic procedures described in the Supplementary Materials and Methods. The sequencing coverage and quality statistics for each sample are summarized in Table S6.

## 3. Results

### 3.1. FGFR1 mRNA Expression Is Increased in PCa

Analysis of public genomic databases suggested a significant upregulation of the expression of FGFR1 mRNA in PCa, compared to normal prostate samples (Figure S2A). A more detailed analysis of FGFR1 gene expression in the large MSKCC microarray gene expression data set (218 prostate cancers) [32] showed that FGFR1 mRNA levels were significantly increased in primary PCa compared to normal prostate, and further increased in advanced and metastatic PCa (Figure S2B). The expression of FGFR1 was higher in Gleason 9 and stage 4 tumors compared to cases with lower Gleason scores and stages. Its expression correlated with lymph node metastasis (Figure S2B, \*\*\*  $p < 0.001$ ).

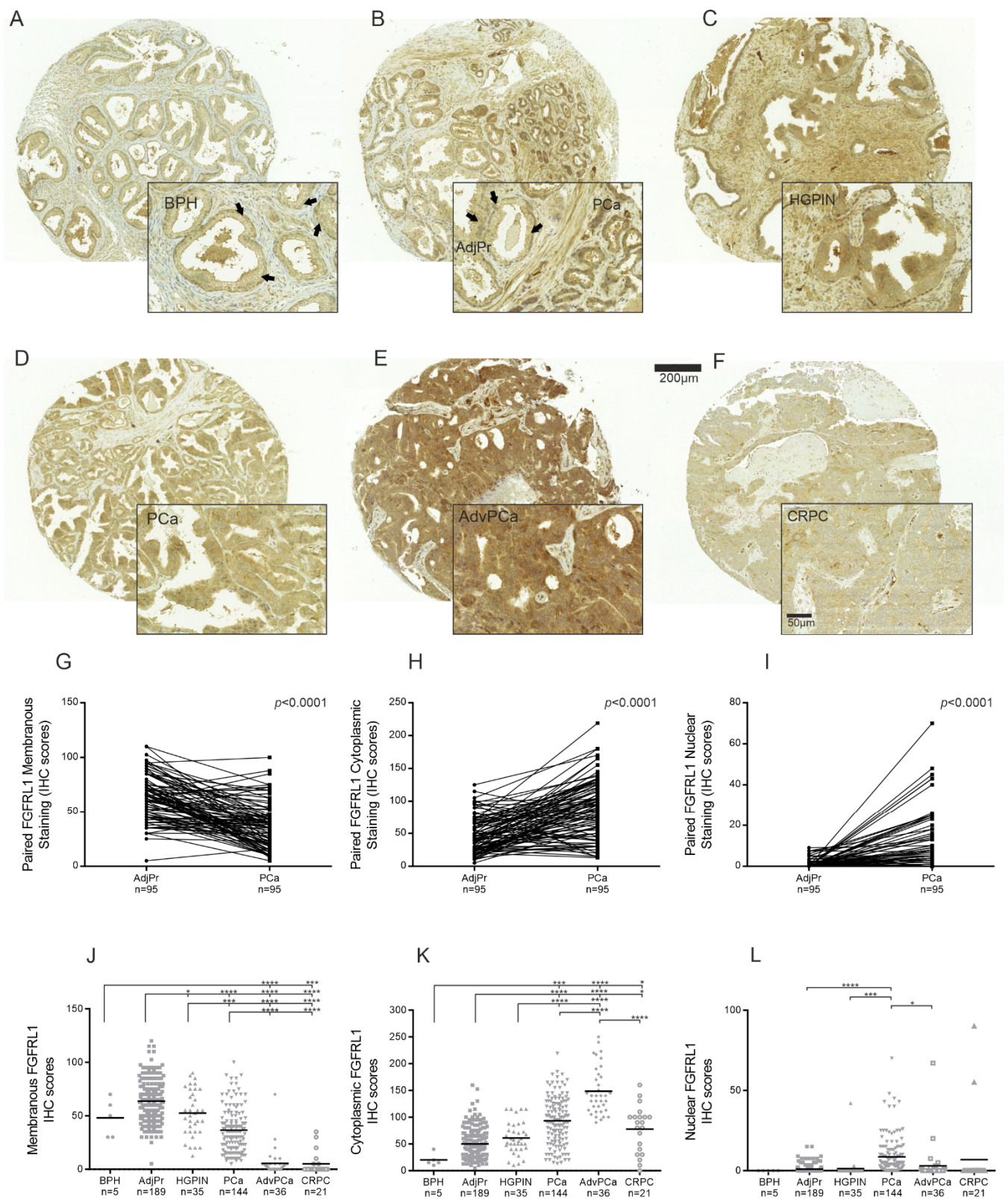
Prompted by the MSKCC gene expression microarray data, we investigated the expression of FGFR1 mRNA in primary PCa samples from RPs of 48 PCa patients. We used quantitative qRT-PCR to measure FGFR1 mRNA expression in tissue samples of primary PCa ( $n = 48$ ) and adjacent non-malignant prostate (AdjPr) available from 36 RPs of the patients. The results demonstrated that the relative FGFR1 mRNA levels were upregulated in PCa tissues compared to AdjPr tissues (Figure S2C,  $p < 0.0001$ ), in line with the MSKCC data [32].

### 3.2. FGFR1 Protein Shows Increased Expression and Altered Cellular Localization in HGPIN and PCa Compared to Benign Prostate

Next, we studied whether increased FGFR1 mRNA gene expression resulted in altered protein levels. We immune-stained TMAs containing samples from BPH, AdjPr, HGPIN, and primary PCa (TMA I), AdvPCa (TMA II), and CRPC (TMA III) for the FGFR1 protein. In non-malignant tissues (BPH and AdjPr), luminal epithelial cells showed clear membrane-associated FGFR1 staining, often in combination with weak cytoplasmic staining (Figure 1A,B). In HGPIN and primary PCa, membranous staining was less clear, but increased cytoplasmic and positive nuclear staining were often observed (Figure 1C,D). In both AdvPCa and CRPC, IHC staining of FGFR1 was primarily cytoplasmic (Figure 1E,F). Human liver and colon cores served as positive controls in TMAs (Figure S3). Stromal cells consistently showed weak to moderate FGFR1 staining. The IHC scores were used to quantify and compare FGFR1 staining across the entire panel of luminal epithelial and cancer cells [35]. In pairwise analyses of AdjPr and PCa from the same patients in TMA I, membrane-associated staining was significantly weaker in PCa (Figure 1G), while IHC scores for cytoplasmic and nuclear FGFR1 staining were significantly higher in cancer tissues compared to AdjPr (Figure 1H,I, respectively). IHC scores further showed a gradual decrease in membranous FGFR1 staining from AdjPr to AdvPCa and CRPC (Figure 1J), while cytoplasmic FGFR1 showed a reciprocal, stepwise increase (Figure 1K). Nuclear FGFR1 levels were higher in primary PCa tissues than in AdvPCa and CRPC (Figure 1L). This tendency did not reach statistical significance for CRPC, probably due to the small number of samples included ( $n = 21$ ). Nuclear FGFR1 was also detected in some AdjPr samples. None of the BPH and only a few HGPIN specimens showed nuclear FGFR1 staining.

### 3.3. Expression of FGFR1 Correlates with Gleason Score, Pre-Operative PSA Levels, and Ki67 Staining

Complete clinical follow-up information was available for 139 (97%) patients of 144 primary PCa patients (TMA I). Median follow-up time was 46 (inter-quartile range, 24–114) months. The samples were stratified based on their localized FGFR1 IHC scores (high vs. low) and association with age, Gleason score (GS), PSA-level, pT-status, and PSM. Significant associations were found between the GS ( $\leq 7$  vs. 8–9) and membranous and nuclear staining (Table S1). Membranous staining showed a significant negative correlation with GS ( $r = -0.200$ ,  $p = 0.018$ ) and Ki67 IHC staining ( $r = -0.269$ ,  $p = 0.002$ ) (Table 1). Similarly, cytoplasmic FGFR1 localization displayed a significant positive correlation with GS ( $r = 0.217$ ,  $p = 0.010$ ) and Ki67 IHC staining ( $r = 0.261$ ,  $p = 0.002$ ) (Table 1). The strongest correlation was observed between nuclear staining and GS ( $p < 0.0001$ ). Nuclear staining also correlated with pre-operative PSA ( $p = 0.019$ ). Low membranous and high cytoplasmic FGFR1 levels further showed a tendency to indicate reduced disease-free lifetime after radical prostatectomy (Figure 2A,B, respectively). In contrast, nuclear staining was positively correlated with GS ( $r = 0.297$ ,  $p < 0.0001$ ) and pre-operative PSA ( $r = 0.199$ ,  $p = 0.002$ ) (Table 1) and associated with PSM (Table S1). Only men in the high nuclear FGFR1 group showed a significantly shorter time to BCR (Figure 2C). High nuclear FGFR1 was an independent prognostic marker for a shortened BCR-free survival time after RP (HR 3.535; 95% CI 1.747–7.153,  $p < 0.0001$ , Table S2).



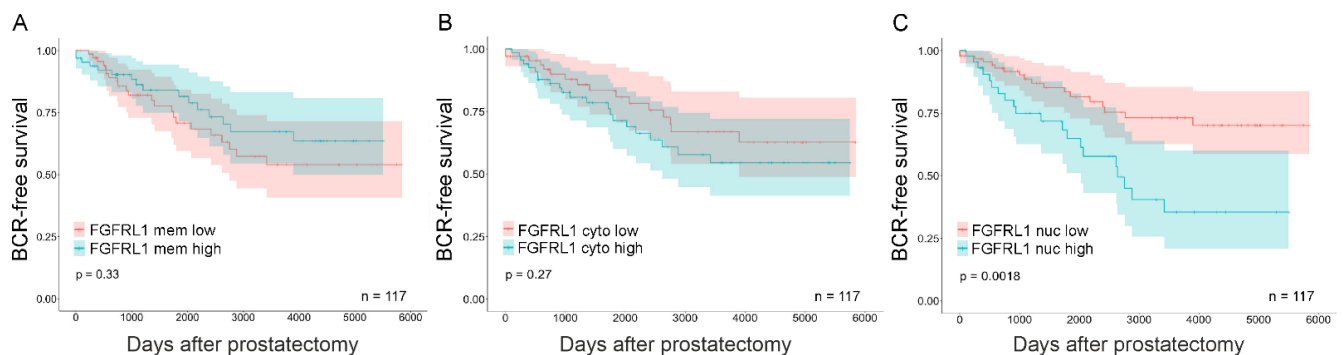
**Figure 1.** Immunohistochemical (IHC) staining of FGFR1 in benign prostate and PCa tissue. (A–F), Representative FGFR1 IHC staining is shown in benign prostate hyperplasia (BPH) (A), adjacent



benign prostate tissue (AdjPr) (B), high-grade PIN (HGPIN) (C), primary PCa (B,D), advanced PCa (AdvPCa) (E), and castration-resistant PCa (CRPC) (F). The arrows point to representative areas with clear membranous FGFR1 staining (A,B, inserts). (G–I), Comparison of cell membrane (G), cytoplasmic (H), and nuclear (I) FGFR1 IHC scores in paired specimens in TMA I. (J–L), Comparison of cell membrane (J), cytoplasmic (K) and nuclear (L), FGFR1 IHC scores in BPH, AdjPr, HGPIN, PCa, AdvPCa, and CRPC. Black bars represent the mean IHC score of each group. The difference among groups was analyzed by Kruskal–Wallis test and Dunn’s multiple comparison test. n is patient number. \*  $p < 0.05$ , \*\*  $p < 0.01$ , \*\*\*  $p < 0.001$ , \*\*\*\*  $p < 0.0001$ .

**Table 1.** Correlation of FGFR1 staining with the Gleason score, pre-operative PSA, and Ki67 expression (Spearman rank correlation).

Variables	FGFR1 Staining IHC Scores	Spearman Rank Correlation Coefficient	p-Value
Gleason Score	Membrane	−0.200	<b>0.018</b>
	Cytoplasm	0.217	<b>0.010</b>
	Nucleus	0.297	<b>0.000</b>
Pre-operative PSA	Membrane	−0.004	0.966
	Cytoplasm	−0.141	0.098
	Nucleus	0.199	<b>0.019</b>
Ki67 IHC scores	Membrane	−0.269	<b>0.002</b>
	Cytoplasm	0.261	<b>0.002</b>
	Nucleus	0.097	0.261



**Figure 2.** Kaplan–Meier analysis for membrane, cytoplasmic, and nuclear FGFR1 expression associated with BCR-free patient survival in primary PCa. Primary PCa cases were stratified based on localized FGFR1 IHC score. (A) low cell membrane (FGFR1 mem low, red) versus high cell membrane (FGFR1 mem high, blue), (B) low cytoplasmic (FGFR1 cyto low, red) versus high cytoplasmic (FGFR1 cyto high, blue), and (C) low nuclear (FGFR1 nuc low, red) versus high nuclear (FGFR1 nuc high, blue). 95% confidence interval is shown.  $n = 117$ , no neoadjuvant or adjuvant treatment.

#### 3.4. FGFR1 Negatively Regulates FGFR Signaling in Prostate Cancer Cells

Next, the expression and function of FGFR1 was studied in experimental models. The FGFR1 protein was detected at low levels in non-malignant PNT1a prostate epithelial cells and at higher levels in several PCa cell lines (Figure S4A). For functional studies, PC3M, LNCaP, and VCaP cells were subjected to FGFR1 silencing experiments using shRNA vectors. Additional CRISPR-cas9 KD experiments with LNCaP and VCaP failed due to poor survival of the FGFR1 knockdown cells (not shown). Knockdown clones with decreased FGFR1 levels were validated by qRT-PCR and Western blotting (Figure S4B,C).

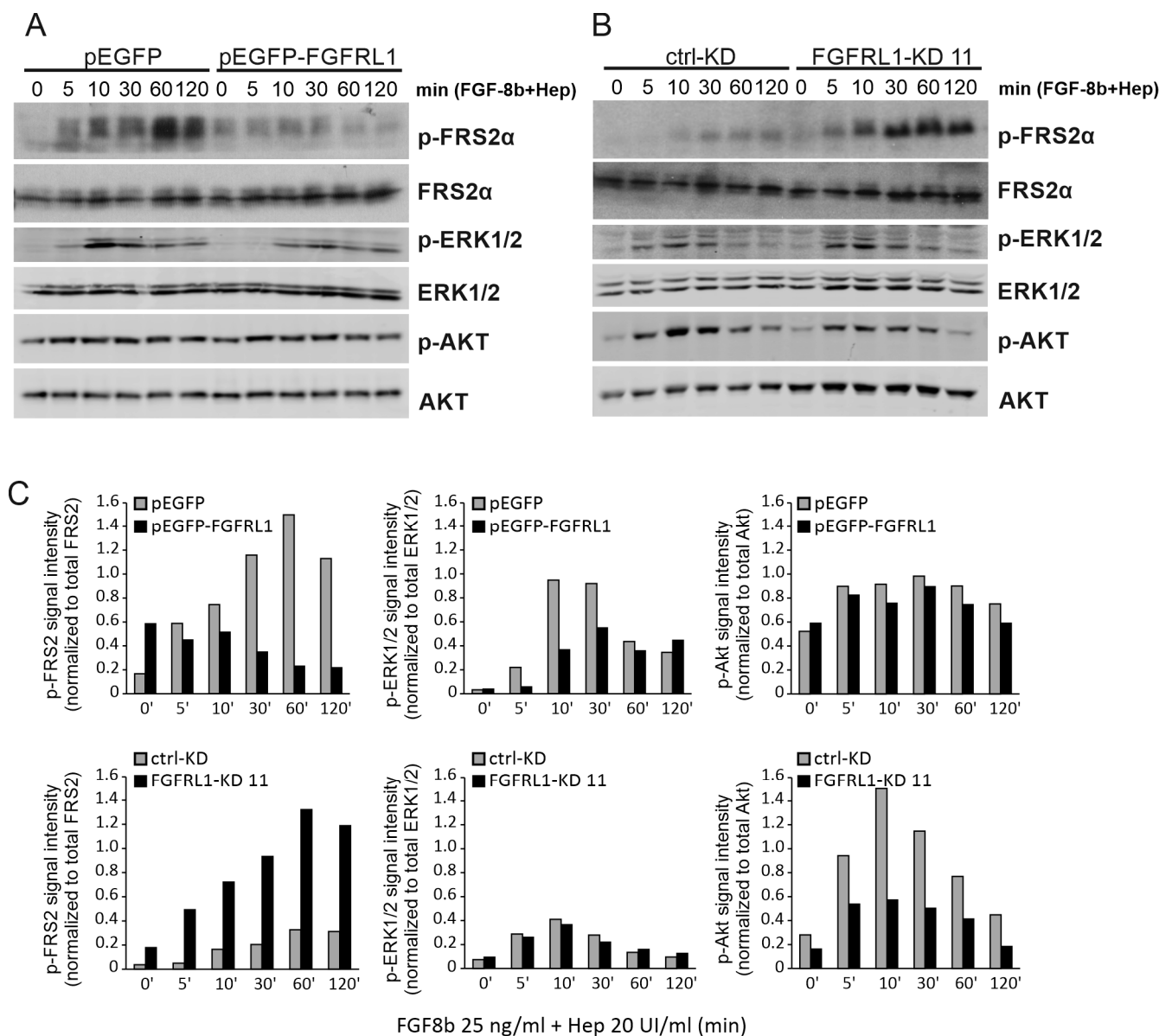
PC3M clone 11 exhibited approximately 75% stable knockdown at RNA and protein levels and was used for further experiments, in contrast to 50% for clone 9 (Figure S4B,C). Finally, stable functional overexpression of FGFR1 was achieved by the transient transfection of PC3M cells with a pEGFP-tagged FGFR1 plasmid, as verified by Western blotting (Figure S4D). Ctrl-KD PC3M cells showed clear endogenous FGFR1 staining at the cell membranes, but the membranous protein was not detectable in FGFR1-KD PC3M cells (Figure S4E). Strong immunostaining of FGFR1 was detected in a subpopulation of cells transfected with pEGFP-FGFR1 (Figure S4F).

PC3M cells with FGFR1 knockdown or overexpression were used to investigate the phosphorylation of downstream FGFR targets upon stimulation with the ligand FGF8b. The Western blot of FGFR1 expression in these cell lines and their controls is presented in Figure S4C,D. FGFR1 has a high binding ability to FGF8b [19]. Overexpression of FGFR1 effectively attenuated the phosphorylation of FGFR-substrate 2 $\alpha$  (FRS2 $\alpha$ ), which is typically activated by FGFRs including FGF8b (Figure 3A,C, upper panel) [6]. In contrast, FGF8b evoked a more robust FRS2 $\alpha$  phosphorylation response in FGFR1-KD cells compared to the control (Figure 3B,C, lower panel; see also Figure S5), suggesting a decoy functionality for FGFR1. Furthermore, analysis of the Ras/Raf/MAPK signaling cascade induced by FGF8b showed that phosphorylation of ERK1/2 was delayed and less pronounced in FGFR1-overexpressing cells compared to controls (Figure 3A,C, upper panel). However, phosphorylation of ERK1/2 in FGFR1 knockdown cells upon FGF8b stimulation was not altered compared to controls (Figure 3B,C, lower panel). PI3K/AKT signaling was unchanged in FGFR1-overexpressing cells (Figure 3A,C, upper panel), while phosphorylated AKT showed a weaker signal in FGFR1-KD cells stimulated by FGF8b (Figure 3B,C). Corresponding results were obtained with FGF2 treatment, which binds FGFR1 with less affinity than FGF8b [19] (data not shown).

### 3.5. FGFR1 Knockdown Affects PC3M Organoid Growth and Differentiation in Organotypic 3D Cultures

The effect of FGFR1 on PCa cell growth and migration of parental PC3M, control-KD, and stable FGFR1-KD clones 9 and 11 was investigated in 2D monolayer cultures by monitoring confluence (%) and wound healing in vitro. FGFR1-KD cells showed only slightly increased cell growth compared to parental and control-KD cells over four days of culturing (Figure 4A, left panel). The cell migration of FGFR1-KD cells was slightly enhanced compared to control-KD cells (Figure 4A, right panel).

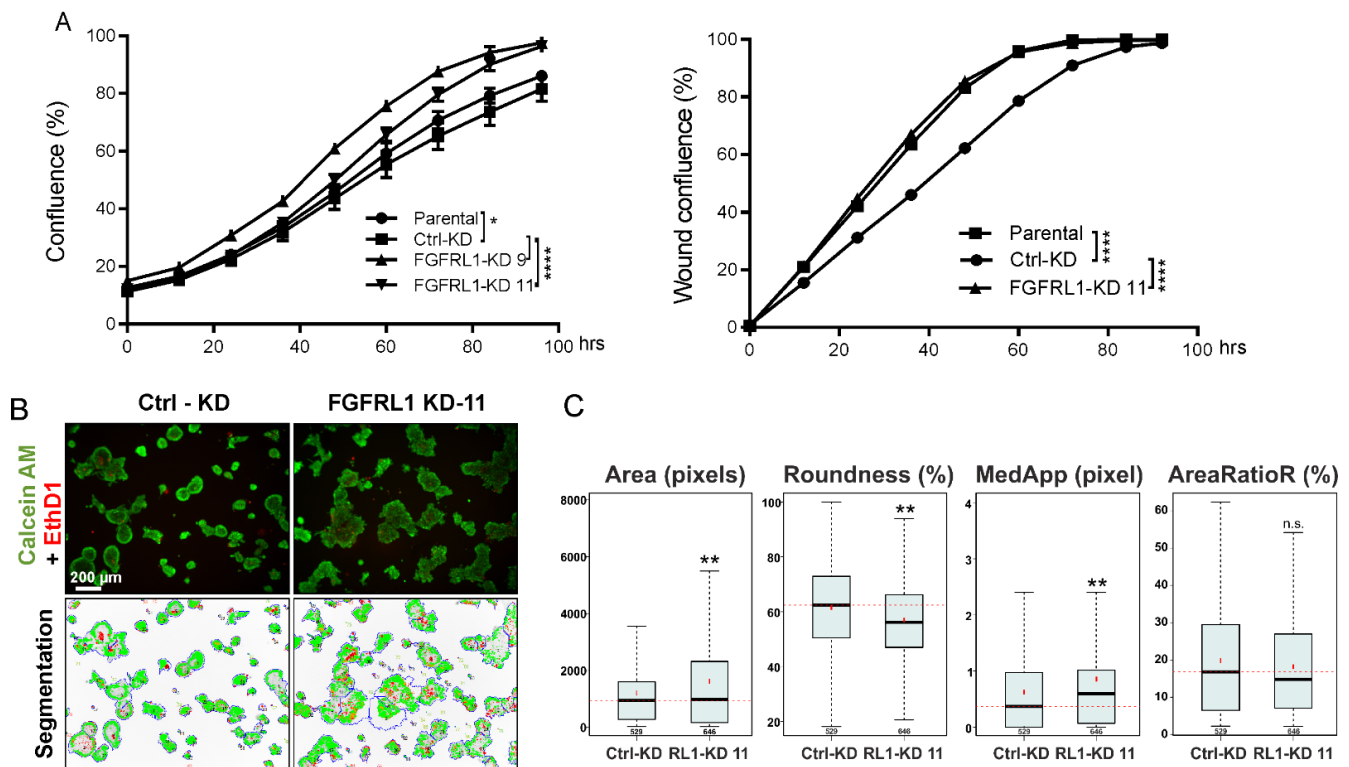
To examine the role of FGFR1 in PCa cells under conditions that mimicked the tumor microenvironment in vitro, PC3M control-KD and FGFR1-KD cells were cultured in an organotypic 3D cell culture system, supporting physiologically relevant cell–cell and cell–matrix interactions and promoting epithelial differentiation. Most organoids formed by control-KD cells matured to round, well-differentiated, and polarized structures with clear boundaries, strong cell–cell adhesion, and a detectable lumen—hallmarks of PC3M and PC3 cells in Matrigel (Figure 4B). By contrast, the polarization, shape, and symmetry were significantly disturbed in organoids formed by FGFR1-KD cells (Figure 4B), which also lacked a hollow lumen. The average size of FGFR1-KD spheroids was slightly but significantly increased, according to quantitative image analysis (Figure 4C, *Area*). The increasingly irregular shape of FGFR1-KD organoids was characterized by reduced roundness and increased numbers of protrusions in the organoids (Figure 4C, *Roundness* and *MedApp*). Cell death was not significantly affected in the FGFR1-KD spheroids (*AreaRatioR*).



**Figure 3.** Western blot analysis of FGF-induced signaling in FGFR1-modified tumor cells. (A) PC3M cells transfected with FGFR1 overexpression (pEGFP-FGFR1) or control vector (pEGFP). (B) sh-RNA transfected PC3M cells with stable FGFR1 knockdown (FGFR1-KD 11) and scrambled control (ctrl-KD). In both cases, serum-starved cells were treated with FGF-8b (25 ng/mL) and heparin (20 UI/mL) for indicated times. (C) Quantification of signal intensities of p-FRS2 $\alpha$ , p-ERK1/2, and p-Akt (Ser473) in Western blot. The phospho-protein intensity values were obtained using Image J and normalized against the corresponding total protein intensity in a given sample.

Organoids were also treated with the FGFR inhibitors BGJ398 and AZD4547, starting from day four. FGFR1-KD organoids showed significantly reduced sensitivity to BGJ398 in 3D cultures at 5  $\mu$ M concentration (Figure S5A,B). Additionally, cell death was more pronounced in control-KD cells treated with 5  $\mu$ M of BGJ398 than in FGFR1-KD cells (Figure S5B, *AreaRatioR*). Statistically significant differences in responses to AZD4547 were also observed at 1  $\mu$ M concentration (Figure S5B, *Area* and *AreaRatioR*). No significant differences were observed in 2D monolayer cultures (Figure S5C). The presence and functional activity of FGFR1 may thus sensitize organoids specifically to the effects of FGF inhibitors, while its absence protects against these inhibitors. Our observations were in line with the presumed function of FGFR1 as a decoy receptor that reduces FGF signaling and

FGF-induced epithelial maturation in host cells, which may be more critical for cell growth and survival under organotypic 3D growth conditions in a laminin-rich matrix that strongly promotes cell differentiation. The functionality of the FGFR inhibitors in inhibiting FGF-induced signaling in these cells was verified by Western blotting (Figure S5D). The MEK inhibitor PD98059 was used as a negative control for FGFR-specific FRS2 $\alpha$  phosphorylation.



**Figure 4.** Functional analysis of PC3M cells with stable knockdown of FGFR1 in vitro. (A) Cell proliferation (left) and migration (right) of control (ctrl-KD) and FGFR1 knockdown (FGFR1-KD) PC3M cells in 2D cultures were examined using IncuCyte imaging device in real time (two-way ANOVA, \*  $p < 0.05$ , \*\*\*\*  $p < 0.001$ ). (B) Cells were cultured in organotypic 3D culture system in Matrigel for 12 days. At the end point, the cells were stained with Calcein AM and Ethidium homodimer (EthD-1) and imaged with confocal microscope (upper panel). Phenotypic analysis was performed with AMIDA software (lower panel, image segmentation). (C) Quantitation of object size (*Area*), the shape of objects (*Roundness* and *MedApp*), and the relative amount of red fluorescence in an object (*AreaRatioR*), indicating cell death, are presented as box-and-whisker plots (Bonferroni-corrected *t*-test, \*\*  $p < 0.001$ ; n.s., not significant). The total number of analyzed objects (in 6 replicate wells) is indicated under the whisker of the box-and-whisker plots.

### 3.6. Growth of Xenografts Derived from FGFR1-KD Cells Is Decreased

The role of FGFR1 in regulating PCa cell growth in vivo was studied by inoculating the stable PC3M clone FGFR1-KD 11 and control-KD cells subcutaneously into athymic nude male mice. All mice in the control group generated tumors ( $n = 16$ ), but tumors grew in only 13 of the 16 mice in the FGFR1-KD group. Consistently reduced FGFR1-KD expression in tumors was validated by qRT-PCR after 45 days (data not shown) and by decreased overall immunohistochemical staining (Figure S6). FGFR1-KD tumors grew at a significantly slower rate and produced smaller xenografts, while the body weights of mice did not differ (Figure 5A); however, IHC staining of the KD tumors for PHH3 did not differ significantly from that of control tumors ( $p = 0.6580$ , Figure S7A). The H&E-stained sections of FGFR1-KD tumors also showed a denser and seemingly less angiogenic histology than the control-KD tumors (Figure 5B), but IHC staining for CD34 did not show a statistically significant difference ( $p = 0.2028$ , Figure S7B). Nevertheless, the cell-cycle-

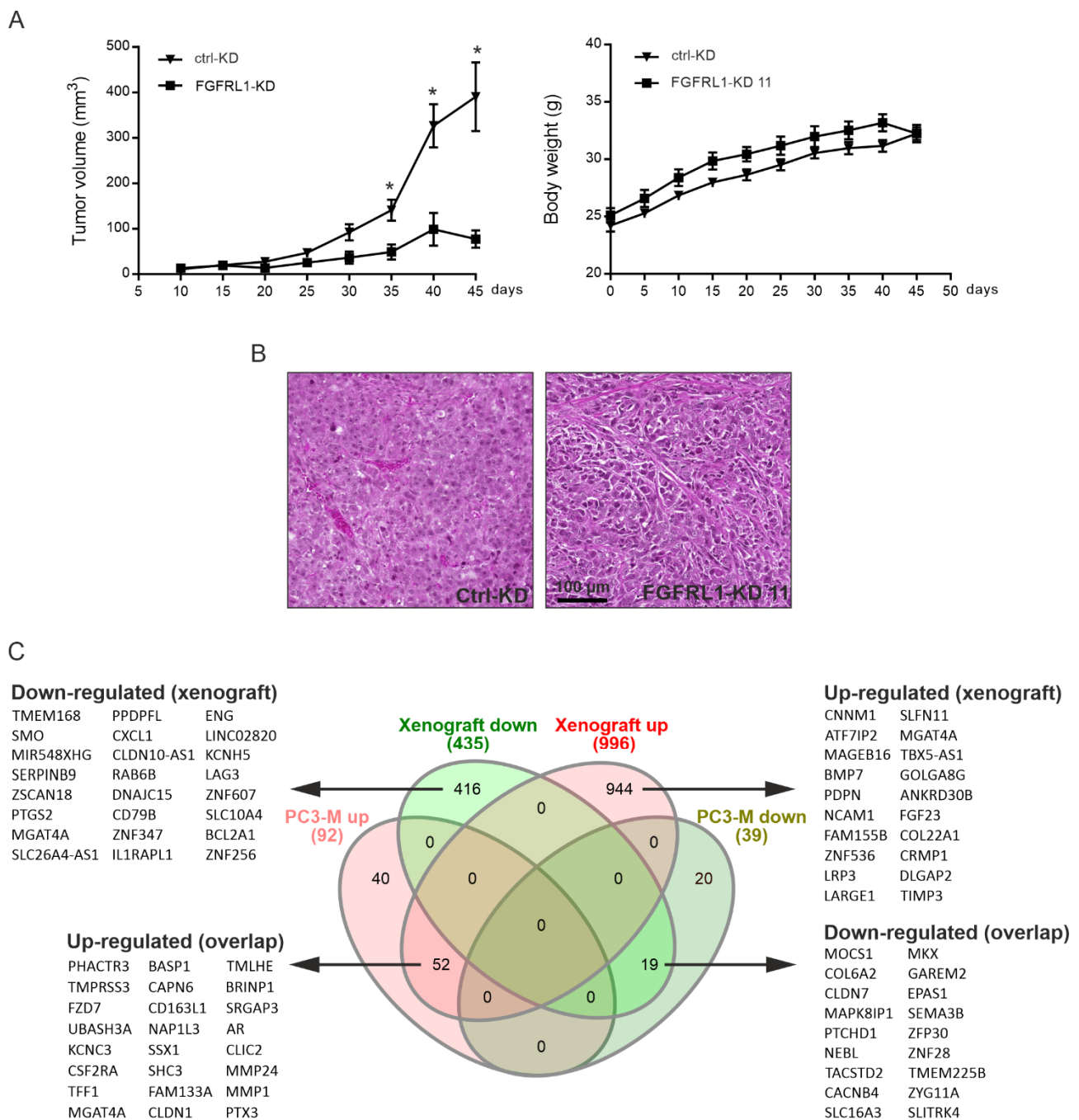
related proteins cyclin E, cyclin-dependent kinase 2 (CDK2), and CDK4 were expressed at significantly lower levels in FGFR1-KD tumors (Figure S7C,E–G), in line with the reduced growth of xenografts. By contrast, cyclin D1 and CDK6 showed no significant differences (Figure S7C,D,H).

### 3.7. Altered Gene Expression Profiles between Control-KD and FGFR1-KD Cells in Cultured Cells and Xenografts

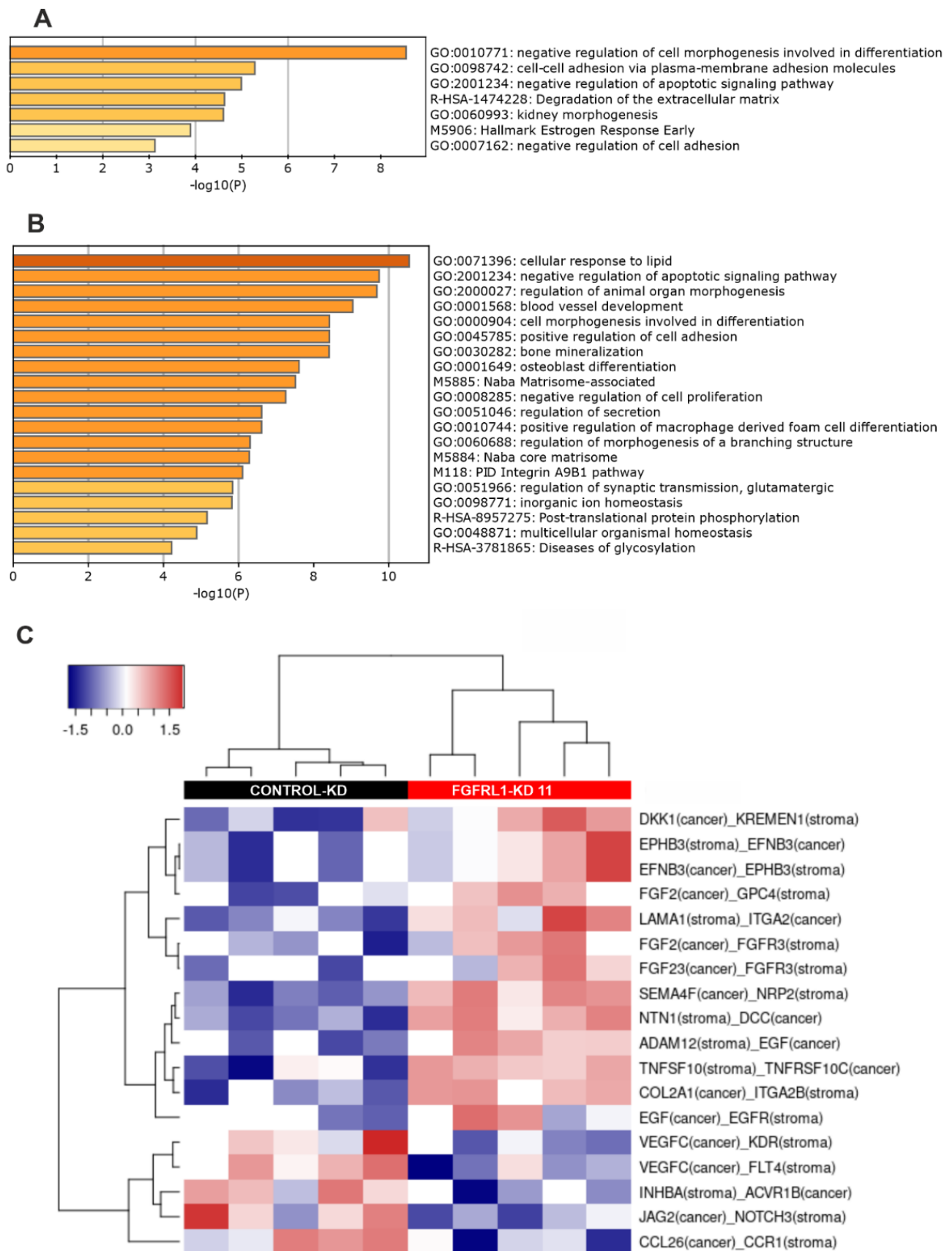
To investigate the molecular mechanisms of FGFR1 in regulating PCa, RNAs from control-KD and FGFR1-KD PC3M cells were sequenced. The analysis of the expression data resulted in 131 differentially expressed genes with a logarithmic fold change ( $\log_2FC$ )  $\geq 1$  or  $\leq -1$  corresponding to at least a two-fold change of expression (93 upregulated, 38 downregulated) and false discovery rates (FDRs)  $\leq 0.05$  (Figure 5C, Venn diagram). In parallel, we sequenced the mRNA from five FGFR1-KD xenografts and five matching control tumors. RNA-seq data from xenograft tumors indicated a total of 1431 genes, differentially expressed in FGFR1 KD xenografts compared to controls, with  $\log_2$ -fold changes ( $\log_2FCs$ )  $\geq 1.5$  and  $\leq -1.5$ , and FDRs  $\leq 0.01$ . Of these genes, 997 were upregulated and 434 were downregulated (Figure 5C). The Spearman correlation between the RNA-seq values of cell lines and xenografts was +0.87, indicating overall good consistency between the in vitro and in vivo models. A total of 71 genes (52 upregulated, 19 downregulated) were differentially expressed in both the PC3M FGFR1-KD cells and xenografts, with comparable fold changes, the most significant of which are listed in Figure 5C. The top 71 unidirectionally up- and downregulated genes in both cell lines and xenografts are shown in Table S3A,B, respectively. They included upregulated genes for Frizzled Class Receptor 7 (*FZD7*), pentraxin-3 (*PTX3*), protease-like matrix metalloproteinase 1 (*MMP1*) and 24 (*MMP24*), or cathepsin B (*CTSB*)—all active in ECM turnover—and downregulated genes such as collagens (*COL6A2*) and semaphorin 3B (*SEMA3B*). Differential expression of *PTX3* and *FZD7* in FGFR1-KD cells and xenograft tumors was validated by qRT-PCR in FGFR1-KD xenografts (Figure S8).

The top 100 differentially expressed up- and downregulated genes in FGFR1-KD xenografts compared to control tumors are listed in Table S4A,B, respectively, and partially in Figure 5C. The top upregulated genes in xenografts included those for the bone morphogenic protein 7 (*BMP7*), cell adhesion protein *NCAM1*, and protease inhibitor *TIMP3*, which modulate tumor–host interactions and may suppress tumor growth. The top downregulated genes included, for example, the signal transducers smoothed (*SMO*), *SERPINB9* and *CXCL1*.

GO (and GSE) analyses for the 71 overlapping genes in both FGFR1-KD cell lines and xenografts resulted in seven significantly enriched GO categories and gene sets with  $p$ -values  $\leq 0.001$  (Figure 6A). The most significant GO/gene set categories were related to cell and tissue morphogenesis, apoptosis, cell adhesion, and ECM turnover. The GSE and GO analyses for the 100 most prominently altered up- and downregulated genes affected by FGFR1-KD in xenografts (Table S4A,B) revealed highly overlapping, but more significant, GO categories, again related to cell and tissue morphogenesis and the regulation of apoptosis, but also to the negative regulation of proliferation, adhesion, angiogenesis, the matrisome composed of ECM proteins, and ECM turnover (Figure 6B). These, and more specific pathways such as bone mineralization and osteoblast differentiation, are highly characteristic of FGF/FGFR regulation [4,5,8]. Simultaneously affected pathways and mechanisms may explain the reduced growth of FGFR1-KD xenografts.



**Figure 5.** Growth and gene expression analysis of PC3M FGFR1-KD and control-KD xenografts. (A) Growth of the cells as subcutaneous xenografts and body weight of mice bearing the tumors (\*  $p < 0.05$ , student's t-test for each time point,  $n = 10$  for each group). (B) HE-stained histological sections of a representative xenograft of control-KD (ctrl-KD) and FGFR1-KD (FGFR1-KD11) groups. (C) Analysis of differential gene expression after shRNA-mediated FGFR1 knockdown in PC3M cell line and mouse tumor xenografts generated from PC3M cells, in comparison to corresponding control cells/tumors. Venn diagrams show genes altered with a fold change > 2-fold with FDR of <0.001. Core genes in xenograft data and overlapping between cell line and xenograft data are listed beside the diagrams.



**Figure 6.** Bioinformatic analyses of differentially expressed (DE) genes in PC3M cell line and mouse xenografts. (A) Significantly enriched gene ontology (GO) categories and pathways in 71 DE genes

identified in both PC3M cells and the mouse xenograft tumors, after FGFR1 knockdown. Genes were analyzed by gene set enrichment analyses (GSEA) in the MSigDb database (<http://www.gsea-msigdb.org>, 10 January 2021) and visualized using Metascape ([www.metascape.org](http://www.metascape.org), 15 January 2021). (B) Enriched GO categories and pathways in DE gene set (100 genes up and 100 genes down) identified in FGFR1-KD xenograft tumors using GSEA and Metascape for visualization. (C) Heat map indicating significantly enriched tumor–stroma interactions detected by the CASTIN algorithm in FGFR1-KD xenografts compared to controls [40]. Stroma: corresponds to reads matched to the mouse genome (=mouse stromal cells in xenografts). Tumor: corresponds to reads matched to human genome (=PC3M cells in xenografts).

### 3.8. Altered Ligand–Receptor Interactions in Xenografts

Because FGFR1 xenograft growth was strongly inhibited, the CASTIN analysis tool [40] was used to identify significantly enriched tumor–stroma interactions between receptors and cognate ligands, expressed specifically by mouse cells (stromal cells) and human tumor cells (PC3M cells). The heat map (Figure 6C and Table S5) indicates 18 interactions enriched in FGFR1-KD xenografts, including growth and differentiation factors with their respective ligands, including the pairs SEMA4F–NRP2, EFNB3–EPHB3, FGF2–FGFR3 or GPC4, EGF–EGFR, VEGFC–KDR or FLT4, and INHBA–ACVR1B3. Additional connections suggest the inhibition of Wnt signaling (DKK1–KREMEN) and mechanisms with tumor suppression capacity (DCC–NTN1). A particularly interesting potential interaction with high relevance for tumor biology includes JAG2 (cancer) with NOTCH3 (mouse stroma), and interactions of integrins (ITGA2, ITGA2B) with ECM proteins (COL2A1, LAMA1). Most of these represent altered tumor–host cell interactions, in line with the GO and GSEA analyses, which may functionally relate to the observed differences in tumor proliferation and morphology.

## 4. Discussion

We demonstrate for the first time that increased FGFR1 expression may play a role in PCa progression in a significant proportion of PCa patients. Our results also show the re-localization of membranous FGFR1 in nonmalignant prostate to cytoplasmic and nuclear sites in PCa. Importantly, decreased membranous and increased intracellular FGFR1 levels correlated with adverse clinicopathological features of primary PCa, and the occurrence of nuclear staining was associated with a shortened time to BCR in PCa patients.

The potential routes and mechanisms of the diverse intracellular localizations of FGFR1 are not clear. The newly synthesized FGFR1 is first transported to the cell membrane, and the protein may then be internalized by endosomes for recycling or degradation. The short intracellular domain of FGFR1 may affect the turnover and functions of FGFR1 [17,41]. The extracellular domain of FGFR1 can also be cleaved in the proximal region and shed from the cell surface in a soluble form [19]. Our observation of altered subcellular localization could indicate that newly synthesized FGFR1 in PCa cells is not properly transported to the cell membrane but, instead, accumulates in the cytoplasmic organelles. Altered internalization and defective trafficking of membranous FGFR1 in tumor cells could also lead to the observed localization of FGFR1 in nuclei or cytoplasm [17,19,42].

There is compelling evidence for the nuclear localization and functioning of other FGFRs in FGFR-related cancers and congenital diseases [42–45], but the nuclear localization of FGFR1 and its potential functional consequences have not been previously identified. Our results suggest that decreased membranous FGFR1 staining, concomitant with increased cytoplasmic and nuclear FGFR1, is associated with aggressive PCa. Specifically, a shortened time to BCR can be expected for men with high nuclear staining in primary PCa. This adverse prognostic marker could be considered in patient surveillance. Nuclear staining of FGFR1 has also been reported in breast cancer [44] and pancreatic cancer, where this pattern has been associated with poor prognoses [43]. The mechanisms of nuclear FGFR1 remain to be studied. Our clinical results suggest, however, that they could be associated



with prostate cancer evolution. Based on the results of cellular trafficking of other FGFRs, it is possible that either the full-length FGFR1 protein or the cleaved intracellular domain can be transported to the nucleus [42]. However, our immunohistochemical analyses of clinical specimens with a polyclonal anti-FGFR1 antibody could not differentiate between various domains of the protein. An interesting possibility is that FGFR1 could also in the nucleus act via FGFR1 [21], which has been reported to have nuclear functions in breast cancer [44].

The extracellular domain of FGFR1 is strongly homologous with FGFR1-4 and effectively binds at least FGF8 and FGF2 ligands. Both membrane-bound and soluble FGFR1 are capable of sequestering FGFs with high affinity and thus acting as decoy receptors for FGF signaling [19,21]. Our experiments with FGFR1-KD PC3M cells treated with FGF2 and FGF8b, which both bind to FGFR1 [11,12,46], showed more robust phosphorylation of FRS2 $\alpha$  compared to control cells. By contrast, the phosphorylation of FRS2 $\alpha$  decreased when FGFR1 was overexpressed, and this was also accompanied by decreased downstream phosphorylation of ERK1/2. These results supported the suggested decoy receptor function of membranous FGFR1 in cancer cells such as PC3M retaining at least partial membranous FGFR1. Particularly in the nonmalignant prostate epithelium with almost exclusive membranous localization of FGFR1, decoy function of FGFR1 could be prevalent. Indeed, it is possible that, in PCa, due to the loss of membranous FGFR1, re-localized FGFR1 fails to regulate FGFR signaling through the decoy receptor function and/or adopts other functions to promote PCa progression, as happens, for example, in ovarian cancer [27].

A limitation of the current study is that efficient and stable FGFR1 knockdown without compromising cell viability was achieved only in PC3M cells, and thus only these cells could be used in experiments that required a lasting, stable level of knockdown, such as mouse xenografts. Parallel experiments with LNCAP and VCAP cells, using both shRNA and CRISPR-cas-9-mediated methods, did not result in viable cell clones. PC-3 cells are a commonly used prostate cancer cell line, which represent an aggressive, castration-resistant, and androgen-independent form of PCa. In PC3M cells, several knockdown clones were generated and we used the clone (sh11) with the most prominent and sustained knockdown for most experiments. Our in vitro experiments showed that KD of FGFR1 did not have strong effects on the proliferation or migration of PC3M cells in cultures; however, reduced FGFR1 expression modified the differentiation potential of PC3M cells, especially when embedded in laminin-rich Matrigel. This was indicated by characteristic organoid morphologies, such as reduced roundness, increased irregularity, and more pronounced invasive properties in 3D cultures. This was in line with the hypothesis that FGFR1 acts as a decoy receptor under these conditions. Loss of the normal functions of FGFR1 could be linked to an increase in pro-tumorigenic FGF signaling, resulting in the simultaneous loss of differentiation-related aspects such as cell–cell contact, polarization, and the formation of a basement membrane in 3D cultures [38,39]. Reduced FGFR1 expression further lowered the sensitivity of PC3M organoids to small-molecule FGFR inhibitors, possibly resulting from uninhibited growth-stimulatory FGFR pathway activities. These in vitro results could reflect the consequences of the loss of membranous FGFR1 functions and adoption of other putative intracellular functions in malignant prostate tumors.

When FGFR1-KD PC3M cells were implanted into nude mice, the tumor take rate markedly decreased, and the formation of xenografts was considerably slower than that of control cells. This result was somewhat surprising in light of our in vitro results; however, the decreased in vivo growth of FGFR1-KD xenografts could be expected considering the clinical data that indicated increased FGFR1 in association with tumor growth and progression. Besides having a membrane localization-associated decoy function, which could primarily function in normal cells and tissues, FGFR1 may, in a tumor tissue context, contribute to PCa progression by other modes of action, such as an FGF-binding-dependent co-receptor function via FGFR1 [21]. At the time of harvesting the xenograft tumors for histological and molecular examination, the levels of cell-cycle-related proteins cyclin

E, CDK2, and CDK4 were significantly decreased in FGFR1-KD tumors, although the expression of PHH3 or the level of cleaved caspase 3 (not shown) did not significantly differ between KD and ctrl-KD xenografts. Compared to control-KD tumors, FGFR1-KD tumors showed a tendency towards decreased CD34 immunostaining of capillaries, which may have contributed to the decreased growth of FGFR1-KD tumors. Bioinformatics analyses of differential mRNA expression also suggested that pathways related to angiogenesis and blood vessel formation may be affected by FGFR1-KD; however, the results for the in vivo and in vitro models indicated that FGFR1 may not have pronounced direct effects on cell proliferation and cell cycle progression. FGFR1 knockout in ESCCs similarly decreased xenograft growth without greatly affecting proliferation [28,29]. Other mechanisms, such as altered interactions with the tumor microenvironment (ECM, stromal cells, cell adhesion, integrin signaling, etc.), only partially present in the in vitro settings, may therefore be responsible for the observed changes in xenograft growth in vivo. A decrease in the negative-action decoy receptor FGFR1 could also allow repressive stromal-derived FGFR signaling [5,10,11]. By analogy, increased and relocalized FGFR1 expression, as observed in many clinical PCa tissue samples, may contribute to growth-promoting signaling.

RNA sequencing of PC3M FGFR1-KD and control cells, and resulting mouse xenografts, indicated significant enrichment of the same cellular pathways and mechanisms. The xenografts generally showed more pronounced differences in gene expression (>1500 genes significantly changed) than the cell lines in the 2D culture (>120 genes). Nevertheless, the correlation ( $\rho = +0.87$ ) between the two experiments was high, and over 70 genes showed similar expression patterns, with comparable fold changes and identical directions of change. GSE and GO analyses of the genes altered in FGFR1-reduced xenografts and cell lines showed overlapping significant changes in functional pathways that affected cell and tissue morphogenesis, differentiation, and organ development, specifically in epithelial tissues. However, downregulated genes were mainly related to the negative control of apoptosis and the turnover of the ECM. GSE and GO analyses of the xenografts alone also indicated the enrichment of differentially expressed genes involved in the inhibition of proliferation and the regulation of cell adhesion, angiogenesis, bone formation, and the matrix in FGFR1-KD tumors. These results pointed toward a primary role of FGFR1 and associated gene signatures in the modulation of differentiation processes and, under in vivo conditions, in the regulation of tumor–stromal interactions. These processes could relate to the observed changes in xenograft growth and the clinical progression of PCa; however, validation of these assumptions requires further experimental investigation.

To explain our experimental and clinical observations, we focused first on differentially expressed genes observed in both FGFR1-KD xenografts and cell cultures. These included *PHACTR3*, *PTX3*, *TMPRSS3*, and the Wnt receptor *FZD7*, for which functional associations with FGFR1 or FGFR signaling have not been previously reported. The results for *PTX3* and *FZD7* were also validated in the xenografts. Interestingly, the *PTX3* gene, upregulated in both FGFR1-KD xenografts and cell lines, has been shown to inhibit the angiogenic activity of FGF2 [47]. *PTX3* is a pattern-recognition receptor that acts as an FGF antagonist, blocking the growth and vascularization of FGF-regulated tumor types, including PCa [48,49]. FGFR1-KD, via increasing *PTX3*, could thus strongly affect cellular functions, tumor growth, and vascularization. *PTX3* also has suppressive effects on the progression of bladder cancer [49].

The comparison of differentially expressed genes, specifically in FGFR1-KD xenografts versus controls, revealed high-ranking upregulated genes such as *BMP7* [50] and *TIMP3* [51], with specific activities related to tumor–stromal interactions and tumor suppression. *NCAM1* forms a complex with N-cadherin and FGFRs to promote cell adhesion, affecting tumor progression in various ways [52]. Of the enriched downregulated genes, *SMO* is a critical actor in the regulation of the hedgehog pathway in PCa promotion [53], and the chemokine *CXCL1* promotes tumorigenic and angiogenic activity [54]. These genes, along with *PTX3*, could play an important role in the growth suppression of FGFR1-KD tumors. The bioinformatics analysis of interactions between mouse-derived stromal and

human PC3M tumor proteins using the CASTIN software [40] further indicated altered associations between the proteins regulating cell adhesion, bidirectional tumor stromal signaling, tumor growth, angiogenesis, and lymph angiogenesis in FGFR1-KD versus control tumors, suggesting a fundamental rewiring of functional pathways and tumor–stromal contacts in xenografts.

## 5. Conclusions

Our results indicate that FGFR1 can promote PCa growth and progression. The increased expression and cellular re-localization of FGFR1 are associated with adverse clinicopathological characteristics. Importantly, nuclear FGFR1 correlates with a shortened time to BCR, an observation that may have prognostic clinical value. Contrary to the increased growth of PCa in association with high FGFR1 expression, our experimental results showed that FGFR1 KD led to decreased xenograft growth. They also suggested that decreased membranous FGFR1 in PCa cells can affect FGF signaling and disturb cellular differentiation. Our bioinformatics analyses strongly suggested that FGFR1 functions primarily relate to tissue morphogenesis, differentiation, and modulation of the ECM and the regulation of tumor–stroma interactions that affect tumor growth [4,5,11], which are all hallmarks of FGF/FGFR functions [10,55].

**Supplementary Materials:** The following supporting information can be downloaded at: <https://www.mdpi.com/article/10.3390/cancers14020278/s1>, Figure S1: Uncropped Western blots referring to the ones included in the current article, Figure S2: FGFR1 mRNA expression in prostate cancer, Figure S3: Immunohistochemical staining controls for FGFR1, Figure S4: FGFR1 expression in prostate cancer cell lines and characterization of transfected cells, Figure S5: The effects of FGFR inhibitors on PC3M FGFR1-KD prostate cancer cells, Figure S6: FGFR1 immunostaining of xenografts, Figure S7: Immunohistochemical and Western blot analyses of xenograft tumors, Figure S8: Validation of differential expressions of target genes FZD7 and PTX3 in xenografts formed by control versus FGFR1-KD cells, Table S1: Association of FGFR1 IHC staining and clinico-pathological features of primary PCa in TMA I ( $n = 139$ ), Table S2: Univariable and multivariable Cox regression analysis of FGFR1 staining and clinico-pathological parameters regarding to BCR-free survival in primary PCa, ( $n = 117$ , no neoadjuvant or adjuvant treatment), Table S3A: Genes significantly and reproducibly up-regulated in FGFR1-KD cells—xenografts and 2D monolayer cultures (corresponding to Venn diagram in Figure 5C), Table S3B: Genes significantly and reproducibly downregulated in FGFR1-KD cells—xenografts and 2D monolayer cultures, corresponding to Venn diagram shown in Figure 5C, Table S4A: Top 100 most prominently upregulated genes in mouse xenograft tumors after stable knockdown of FGFR1, Table S4B: Top 100 most prominently downregulated genes in mouse xenograft tumors after stable knockdown of FGFR1, Table S5: Significantly enriched tumor–stroma interactions detected by the CASTIN algorithm in PC3M xenografts derived from FGFR1-KD versus control cells, Table S6: The sequencing coverage and quality statistics of next-generation sequencing (NGS) data for PC3M control and FGFR1 knockdown cell line and xenografts, Supplementary Material and Methods.

**Author Contributions:** Conceptualization, M.N. (Matthias Nees), P.H. and L.Y.; methodology, L.Y., M.T., M.C., V.F. and J.T.; software, M.T., M.C., V.F. and I.J.B.; validation, L.Y., M.T. and S.A.; formal analysis, L.Y., H.S., O.E., K.A. and P.T.; investigation, L.Y., M.T., S.A., A.E., H.S. and O.E.; resources, M.N. (Matthias Nees), P.H., T.M., M.K., M.N. (Martti Nurmi) and P.J.B.; data curation, L.Y., M.N. (Matthias Nees), M.T., S.A. and P.H.; writing—original draft preparation, L.Y., M.T., S.A., P.H. and M.N. (Matthias Nees); writing—review and editing, S.A., M.T., M.N. (Matthias Nees), P.T., O.E. and P.H.; visualization, L.Y., M.N. (Matthias Nees), M.T., S.A. and P.H.; supervision, J.T., I.J.B., M.K., K.A. and P.T.; project administration, P.H. and M.N.; funding acquisition, P.H., M.N. (Matthias Nees) and T.M. All authors have read and agreed to the published version of the manuscript.

**Funding:** This research was supported by grants from the Academy of Finland (267326, 268531, 309372) (M.N. (Matthias Nees), T.M., P.H.), the Sigrid Jusélius Foundation (P.H.), the Finnish Funding Agency for Technology and Innovation (TEKES) (P.H.), Finnish Medical Foundation (T.M.), Cancer Society Finland (T.M.), China Scholarship Council (2011616008) (Y.L.), and the European Commission-funded TransPot H2020-MSCA-ITN program (721746) (S.A., M.C.).

**Institutional Review Board Statement:** The study was conducted in compliance with the current revision of the Declaration of Helsinki, which guides physicians and medical research involving human subjects (64th WMA General Assembly, Fortaleza, Brazil; October 2013). The clinical collection of sample primary PCa (TMA I) and the research plans were approved by the Ethics Committee of the Hospital District of Southwest Finland (TO3/021/18; project number 21855 and ETMK Dnro 3/1801/2013). The advanced prostate cancer (TMA II) and CRPC (TMA III) samples belong to the study for advanced/metastatic prostate cancer, which has national approval (Finland) for the registration of information and the use of samples from the Ministry of Health and Education (STM/1352/2010) and the Institute for Health and Welfare (THL/490/5.05.00/2016). The study has been approved by the corresponding institutional review boards, HUS Helsinki University Hospital (§105 HUS/418/2018 and §70/1439/2018), and Valvira (National Supervisory Authority for Welfare and Health). Informed consent was obtained from all subjects involved in the study. The animal experiments were approved by the Regional State Administrative Agency for Southern Finland (ESAVI/3257/2014).

**Informed Consent Statement:** Informed consent was obtained from all subjects involved in the study.

**Data Availability Statement:** Sequencing data files have been deposited in NCBI's Gene Expression Omnibus (Edgar et al., 2002) and are accessible through GEO Series accession number GSE174148 for cell line and GSE174361 for xenograft data. Other data supporting the findings in this study are available upon reasonable request from the authors.

**Acknowledgments:** The authors thank Teresa Elo for her help in processing the clinical samples, and Jesse Mattson, Soili Jussila, and Sinikka Collanus for their excellent technical assistance. The authors also acknowledge the partners of the TransPot Horizon 2020 Marie Skłodowska-Curie program, particularly Hing Leung, Bart Janssen, and Ian Mills, for the fruitful discussions and comments.

**Conflicts of Interest:** The authors declare no potential conflict of interest.

## Abbreviations

AdjPr: adjacent benign prostate; ADT: androgen deprivation therapy; AdvPCa: advanced prostate cancer; AR: androgen receptor; BCR: biochemical recurrence; BPH: benign prostatic hyperplasia; COL6A2: collagen6A2; CRPC: castration-resistant prostate cancer; CTSB: cathepsin B; ECM: extracellular matrix; EGFP: enhanced green fluorescent protein; ESCC: esophageal squamous cell carcinoma; EthD1: Ethidium homodimer-1; FGF: fibroblast growth factor; FGF8: fibroblast growth factor 8; FGFRL1: fibroblast growth factor receptor-like 1; FRS2 $\alpha$ : FGFR-substrate 2 $\alpha$ ; GO: Gene Ontology; GS: Gleason score; GSEA: gene set enrichment analysis; H&E: hematoxylin–eosin; HPIN: high-grade prostatic intraepithelial neoplasia; IHC: immunohistochemistry; KD: knockdown; NCBI: National Center for Biotechnology Information; PCa: prostate cancer; PH: proportional hazard; PTX3: pentraxin-3; MMP1/24: matrix metalloproteinase 1/24; PSM: positive surgical margins; PSA: prostate-specific antigen; qRT-PCR: quantitative real-time polymerase chain reaction; pTNM: pathological TNM stage; RP: radical prostatectomy; SEMA3B: semaphorin 3B; TBP: TATA-box binding protein; TMA: tissue microarray;  $\chi^2$  test: Pearson's chi-squared test.

## References

1. Bray, F.; Ferlay, J.; Soerjomataram, I.; Siegel, R.L.; Torre, L.A.; Jemal, A. Global cancer statistics 2018: GLOBOCAN estimates of incidence and mortality worldwide for 36 cancers in 185 countries. *CA Cancer J. Clin.* **2018**, *68*, 394–424. [[CrossRef](#)]
2. Ingrosso, G.; Detti, B.; Scartoni, D.; Lancia, A.; Giacomelli, I.; Baki, M.; Carta, G.A.; Livi, L.; Santoni, R. Current therapeutic options in metastatic castration-resistant prostate cancer. *Semin. Oncol.* **2018**, *45*, 303–315. [[CrossRef](#)]
3. Turner, N.; Grose, R. Fibroblast Growth Factor Signalling: From Development to Cancer. *Nat. Rev. Cancer* **2010**, *10*, 116–129. [[CrossRef](#)] [[PubMed](#)]
4. Corn, P.G.; Wang, F.; McKeenan, W.L.; Navone, N. Targeting Fibroblast Growth Factor Pathways in Prostate Cancer. *Clin. Cancer Res.* **2013**, *19*, 5856–5866. [[CrossRef](#)] [[PubMed](#)]
5. Giacomini, A.; Grillo, E.; Rezzola, S.; Ribatti, D.; Rusnati, M.; Ronca, R.; Presta, M. The FGF/FGFR system in the physiopathology of the prostate gland. *Physiol. Rev.* **2021**, *101*, 569–610. [[CrossRef](#)] [[PubMed](#)]
6. Eswarakumar, J.; Lax, I.; Schlessinger, J. Cellular signaling by fibroblast growth factor receptors. *Cytokine Growth Factor Rev.* **2005**, *16*, 139–149. [[CrossRef](#)] [[PubMed](#)]

7. Ahmad, I.; Iwata, T.; Leung, H.Y. Mechanisms of FGFR-mediated carcinogenesis. *Biochim. Biophys. Acta (BBA) Bioenerg.* **2012**, *1823*, 850–860. [[CrossRef](#)] [[PubMed](#)]
8. Kwabi-Addo, B.; Ozen, M.; Ittmann, M. The role of fibroblast growth factors and their receptors in prostate cancer. *Endocr. Relat. Cancer* **2004**, *11*, 709–724. [[CrossRef](#)]
9. Helsten, T.; Schwaederle, M.; Kurzrock, R. Fibroblast growth factor receptor signaling in hereditary and neoplastic disease: Biologic and clinical implications. *Cancer Metastasis Rev.* **2015**, *34*, 479–496. [[CrossRef](#)]
10. Haugsten, E.M.; Wiedlocha, A.; Olsnes, S.; Wesche, J. Roles of Fibroblast Growth Factor Receptors in Carcinogenesis. *Mol. Cancer Res.* **2010**, *8*, 1439–1452. [[CrossRef](#)]
11. Elo, T.D.; Valve, E.M.; Seppänen, J.A.; Vuorikoski, H.; Mäkelä, S.; Poutanen, M.; Kujala, P.M.; Härkönen, P.L. Stromal Activation Associated with Development of Prostate Cancer in Prostate-Targeted Fibroblast Growth Factor 8b Transgenic Mice. *Neoplasia* **2010**, *12*, 915–IN19. [[CrossRef](#)]
12. Valta, M.P.; Tuomela, J.; Vuorikoski, H.; Loponen, N.; Väänänen, R.-M.; Pettersson, K.; Väänänen, H.K.; Härkönen, P.L. FGF-8b induces growth and rich vascularization in an orthotopic PC-3 model of prostate cancer. *J. Cell. Biochem.* **2009**, *107*, 769–784. [[CrossRef](#)]
13. Valta, M.P.; Tuomela, J.; Bjartell, A.; Valve, E.; Väänänen, H.K.; Härkönen, P. FGF-8 is involved in bone metastasis of prostate cancer. *Int. J. Cancer* **2008**, *123*, 22–31. [[CrossRef](#)]
14. Trueb, B. Biology of FGFR1L1, the fifth fibroblast growth factor receptor. *Cell. Mol. Life Sci.* **2010**, *68*, 951–964. [[CrossRef](#)] [[PubMed](#)]
15. Gerber, S.D.; Beauchamp, P.; Zhuang, L.; Villiger, P.M.; Trueb, B. Functional domains of the FgfrL1 receptor. *Dev. Biol.* **2020**, *461*, 43–54. [[CrossRef](#)] [[PubMed](#)]
16. Catela, C.; Bilbao-Cortes, D.; Slonimsky, E.; Kratsios, P.; Rosenthal, N.; Welscher, P.T. Multiple congenital malformations of Wolf-Hirschhorn syndrome are recapitulated in Fgfr1null mice. *Dis. Model. Mech.* **2009**, *2*, 283–294. [[CrossRef](#)]
17. Silva, P.N.; Altamentova, S.M.; Kilkenny, D.M.; Rocheleau, J.V. Fibroblast Growth Factor Receptor Like-1 (FGFR1) Interacts with SHP-1 Phosphatase at Insulin Secretory Granules and Induces Beta-Cell ERK1/2 Protein Activation. *J. Biol. Chem.* **2013**, *288*, 17859–17870. [[CrossRef](#)] [[PubMed](#)]
18. Zhuang, L.; Villiger, P.; Trueb, B. Interaction of the receptor FGFR1L1 with the negative regulator Spred1. *Cell. Signal.* **2011**, *23*, 1496–1504. [[CrossRef](#)] [[PubMed](#)]
19. Steinberg, F.; Zhuang, L.; Beyeler, M.; Kälin, R.E.; Mullis, P.E.; Brändli, A.W.; Trueb, B. The FGFR1L1 Receptor Is Shed from Cell Membranes, Binds Fibroblast Growth Factors (FGFs), and Antagonizes FGF Signaling in Xenopus Embryos. *J. Biol. Chem.* **2010**, *285*, 2193–2202. [[CrossRef](#)] [[PubMed](#)]
20. Sleeman, M.; Fraser, J.; McDonald, M.; Yuan, S.; White, D.; Grandison, P.; Kumble, K.; Watson, J.D.; Murison, J. Identification of a new fibroblast growth factor receptor, FGFR5. *Gene* **2001**, *271*, 171–182. [[CrossRef](#)]
21. Amann, R.; Trueb, B. Evidence that the novel receptor FGFR1L1 signals indirectly via FGFR1. *Int. J. Mol. Med.* **2013**, *32*, 983–988. [[CrossRef](#)] [[PubMed](#)]
22. Trueb, B.; Zhuang, L.; Taeschler, S.; Wiedemann, M. Characterization of FGFR1L1, a Novel Fibroblast Growth Factor (FGF) Receptor Preferentially Expressed in Skeletal Tissues. *J. Biol. Chem.* **2003**, *278*, 33857–33865. [[CrossRef](#)] [[PubMed](#)]
23. Kähkönen, T.; Ivaska, K.; Jiang, M.; Büki, K.; Väänänen, H.; Härkönen, P. Role of fibroblast growth factor receptors (FGFR) and FGFR like-1 (FGFR1L1) in mesenchymal stromal cell differentiation to osteoblasts and adipocytes. *Mol. Cell. Endocrinol.* **2018**, *461*, 194–204. [[CrossRef](#)] [[PubMed](#)]
24. Rieckmann, T.; Kotevic, I.; Trueb, B. The cell surface receptor FGFR1L1 forms constitutive dimers that promote cell adhesion. *Exp. Cell Res.* **2008**, *314*, 1071–1081. [[CrossRef](#)]
25. Yang, X.; Steinberg, F.; Zhuang, L.; Bessey, R.; Trueb, B. Receptor FGFR1L1 does not promote cell proliferation but induces cell adhesion. *Int. J. Mol. Med.* **2016**, *38*, 30–38. [[CrossRef](#)]
26. Schild, C.; Trueb, B. Aberrant expression of FGFR1L1, a novel FGF receptor, in ovarian tumors. *Int. J. Mol. Med.* **2005**, *16*, 1169–1173. [[CrossRef](#)]
27. Tai, H.; Wu, Z.; Sun, S.; Zhang, Z.; Xu, C. FGFR1L1 Promotes Ovarian Cancer Progression by Crosstalk with Hedgehog Signaling. *J. Immunol. Res.* **2018**, *2018*, 7438608. [[CrossRef](#)]
28. Takei, Y.; Matsumura, T.; Watanabe, K.; Nakamine, H.; Sudo, T.; Shimizu, K.; Shimada, Y. FGFR1L1 deficiency reduces motility and tumorigenic potential of cells derived from oesophageal squamous cell carcinomas. *Oncol. Lett.* **2018**, *16*, 809–814. [[CrossRef](#)]
29. Tsuchiya, S.; Fujiwara, T.; Sato, F.; Shimada, Y.; Tanaka, E.; Sakai, Y.; Shimizu, K.; Tsujimoto, G. MicroRNA-210 Regulates Cancer Cell Proliferation through Targeting Fibroblast Growth Factor Receptor-like 1 (FGFR1L1). *J. Biol. Chem.* **2011**, *286*, 420–428. [[CrossRef](#)]
30. Donnard, E.; Asprino, P.F.; Correa, B.R.S.; Bettoni, F.; Koyama, F.C.; Navarro, F.; Perez, R.O.; Mariadason, J.; Sieber, O.; Straussberg, R.L.; et al. Mutational analysis of genes coding for cell surface proteins in colorectal cancer cell lines reveal novel altered pathways, druggable mutations and mutated epitopes for targeted therapy. *Oncotarget* **2014**, *5*, 9199–9213. [[CrossRef](#)]
31. di Martino, E.; Taylor, C.F.; Roulson, J.-A.; Knowles, M.A. An integrated genomic, transcriptional and protein investigation of FGFR1L1 as a putative 4p16.3 deletion target in bladder cancer. *Genes Chromosom. Cancer* **2013**, *52*, 860–871. [[CrossRef](#)]
32. Taylor, B.S.; Schultz, N.; Hieronymus, H.; Gopalan, A.; Xiao, Y.; Carver, B.S.; Arora, V.K.; Kaushik, P.; Cerami, E.; Reva, B.; et al. Integrative Genomic Profiling of Human Prostate Cancer. *Cancer Cell* **2010**, *18*, 11–22. [[CrossRef](#)]

33. Cerami, E.; Gao, J.; Dogrusoz, U.; Gross, B.E.; Sumer, S.O.; Aksoy, B.A.; Jacobsen, A.; Byrne, C.J.; Heuer, M.L.; Larsson, E.; et al. The cBio Cancer Genomics Portal: An Open Platform for Exploring Multidimensional Cancer Genomics Data. *Cancer Discov.* **2012**, *2*, 401–404. [[CrossRef](#)] [[PubMed](#)]
34. Kilpinen, S.; Autio, R.; Ojala, K.; Iljin, K.; Bucher, E.; Sara, H.; Pisto, T.; Saarela, M.; Skotheim, R.I.; Björkman, M.; et al. Systematic bioinformatic analysis of expression levels of 17,330 human genes across 9783 samples from 175 types of healthy and pathological tissues. *Genome Biol.* **2008**, *9*, R139. [[CrossRef](#)]
35. Yu, L.; Toriseva, M.; Tuomala, M.; Seikkula, H.; Elo, T.; Tuomela, J.; Kallajoki, M.; Mirtti, T.; Taimen, P.; Boström, P.J.; et al. Increased expression of fibroblast growth factor 13 in prostate cancer is associated with shortened time to biochemical recurrence after radical prostatectomy. *Int. J. Cancer* **2016**, *139*, 140–152. [[CrossRef](#)] [[PubMed](#)]
36. Epstein, J.I.; Allsbrook, W.C., Jr.; Amin, M.B.; Egevad, L.L.; ISUP Grading Committee. The 2005 International Society of Urological Pathology (ISUP) Consensus Conference on Gleason Grading of Prostatic Carcinoma. *Am. J. Surg. Pathol.* **2005**, *29*, 1228–1242. [[CrossRef](#)]
37. Epstein, J.I. An Update of the Gleason Grading System. *J. Urol.* **2010**, *183*, 433–440. [[CrossRef](#)] [[PubMed](#)]
38. Härmä, V.; Virtanen, J.; Mäkelä, R.; Happonen, A.; Mpindi, J.-P.; Knuutila, M.; Kohonen, P.; Lötjönen, J.; Kallioniemi, O.; Nees, M. A Comprehensive Panel of Three-Dimensional Models for Studies of Prostate Cancer Growth, Invasion and Drug Responses. *PLoS ONE* **2010**, *5*, e10431. [[CrossRef](#)] [[PubMed](#)]
39. Härmä, V.; Schukov, H.-P.; Happonen, A.; Ahonen, I.; Virtanen, J.; Siitari, H.; Åkerfelt, M.; Lötjönen, J.; Nees, M. Quantification of Dynamic Morphological Drug Responses in 3D Organotypic Cell Cultures by Automated Image Analysis. *PLoS ONE* **2014**, *9*, e96426. [[CrossRef](#)]
40. Komura, D.; Isagawa, T.; Kishi, K.; Suzuki, R.; Sato, R.; Tanaka, M.; Katoh, H.; Yamamoto, S.; Tatsuno, K.; Fukayama, M.; et al. CASTIN: A system for comprehensive analysis of cancer-stromal interactome. *BMC Genom.* **2016**, *17*, 899. [[CrossRef](#)] [[PubMed](#)]
41. Rieckmann, T.; Zhuang, L.; Flück, C.E.; Trueb, B. Characterization of the first FGFR1 mutation identified in a craniosynostosis patient. *Biochim. Biophys. Acta (BBA) Mol. Basis Dis.* **2009**, *1792*, 112–121. [[CrossRef](#)]
42. Porebska, N.; Latko, M.; Kucińska, M.; Zakrzewska, M.; Otlewski, J.; Opaliński, Ł. Targeting Cellular Trafficking of Fibroblast Growth Factor Receptors as a Strategy for Selective Cancer Treatment. *J. Clin. Med.* **2018**, *8*, 7. [[CrossRef](#)] [[PubMed](#)]
43. Coleman, S.J.; Chioni, A.; Ghallab, M.; Anderson, R.K.; Lemoine, N.; Kocher, H.M.; Grose, R.P. Nuclear translocation of FGFR 1 and FGF 2 in pancreatic stellate cells facilitates pancreatic cancer cell invasion. *EMBO Mol. Med.* **2014**, *6*, 467–481. [[CrossRef](#)] [[PubMed](#)]
44. Coleman, S.; Bruce, C.; Chioni, A.; Kocher, H.; Grose, R. The Ins and Outs of Fibroblast Growth Factor Receptor Signalling. *Clin. Sci.* **2014**, *127*, 217–231. [[CrossRef](#)] [[PubMed](#)]
45. Tuzon, C.T.; Rigueur, D.; Merrill, A.E. Nuclear Fibroblast Growth Factor Receptor Signaling in Skeletal Development and Disease. *Curr. Osteoporos. Rep.* **2019**, *17*, 138–146. [[CrossRef](#)] [[PubMed](#)]
46. Polnaszek, N.; Kwabi-Addo, B.; Peterson, L.E.; Ozen, M.; Greenberg, N.M.; Ortega, S.; Basilico, C.; Ittmann, M. Fibroblast growth factor 2 promotes tumor progression in an autochthonous mouse model of prostate cancer. *Cancer Res.* **2003**, *63*, 5754–5760.
47. Ronca, R.; Giacomini, A.; Di Salle, E.; Coltrini, D.; Pagano, K.; Ragona, L.; Matarazzo, S.; Rezzola, S.; Maiolo, D.; Torella, R.; et al. Long-Pentraxin 3 Derivative as a Small-Molecule FGF Trap for Cancer Therapy. *Cancer Cell* **2015**, *28*, 225–239. [[CrossRef](#)]
48. Ronca, R.; Tamma, R.; Coltrini, D.; Ruggieri, S.; Presta, M.; Ribatti, D. Fibroblast growth factor modulates mast cell recruitment in a murine model of prostate cancer. *Oncotarget* **2017**, *8*, 82583–82592. [[CrossRef](#)]
49. Matarazzo, S.; Melocchi, L.; Rezzola, S.; Grillo, E.; Maccarinelli, F.; Giacomini, A.; Turati, M.; Taranto, S.; Zammataro, L.; Cerasuolo, M.; et al. Long Pentraxin-3 Follows and Modulates Bladder Cancer Progression. *Cancers* **2019**, *11*, 1277. [[CrossRef](#)]
50. Miyazaki, H.; Watabe, T.; Kitamura, T.; Miyazono, K. BMP signals inhibit proliferation and in vivo tumor growth of androgen-insensitive prostate carcinoma cells. *Oncogene* **2004**, *23*, 9326–9335. [[CrossRef](#)]
51. Jackson, H.; Defamie, V.; Waterhouse, P.; Khokha, R. TIMPs: Versatile extracellular regulators in cancer. *Nat. Rev. Cancer* **2017**, *17*, 38–53. [[CrossRef](#)] [[PubMed](#)]
52. Cavallaro, U.; Christofori, G. Cell adhesion and signalling by cadherins and Ig-CAMs in cancer. *Nat. Rev. Cancer* **2004**, *4*, 118–132. [[CrossRef](#)]
53. Karhadkar, S.S.; Bova, G.S.; Abdallah, N.; Dhara, S.; Gardner, D.R.; Maitra, A.; Isaacs, J.T.; Berman, D.M.; Beachy, P.A. Hedgehog signalling in prostate regeneration, neoplasia and metastasis. *Nat. Cell Biol.* **2004**, *431*, 707–712. [[CrossRef](#)] [[PubMed](#)]
54. Lu, Y.; Dong, B.; Xu, F.; Xu, Y.; Pan, J.; Song, J.; Zhang, J.; Huang, Y.; Xue, W. CXCL1-LCN2 paracrine axis promotes progression of prostate cancer via the Src activation and epithelial-mesenchymal transition. *Cell Commun. Signal.* **2019**, *17*, 1–15. [[CrossRef](#)]
55. Katoh, M. FGFR inhibitors: Effects on cancer cells, tumor microenvironment and whole-body homeostasis (Review). *Int. J. Mol. Med.* **2016**, *38*, 3–15. [[CrossRef](#)] [[PubMed](#)]