



Article

# Gut Microbiome of a Multiethnic Community Possessed No Predominant Microbiota

Wei Wei Thwe Khine <sup>1,2</sup>, Anna Hui Ting Teo <sup>1</sup>, Lucas Wee Wei Loong <sup>3</sup>, Jarett Jun Hao Tan <sup>3</sup>, Clarabelle Geok Hui Ang <sup>3</sup> , Winnie Ng <sup>3</sup>, Chuen Neng Lee <sup>4</sup>, Congju Zhu <sup>3</sup>, Quek Choon Lau <sup>3</sup> and Yuan-Kun Lee <sup>1,4,\*</sup>

- <sup>1</sup> Department of Microbiology & Immunology, Yong Loo Lin School of Medicine, National University of Singapore, 5 Science Drive 2, Singapore 117545, Singapore; micwwtk@nus.edu.sg (W.W.T.K.); anna\_tht@hotmail.com (A.H.T.T.)
- <sup>2</sup> Functional Food Forum, Faculty of Medicine, University of Turku, 20014 Turku, Finland
- <sup>3</sup> School of Life Sciences & Chemical Technology, Ngee Ann Polytechnic, 535, Clementi Road, Singapore 599489, Singapore; lucas\_wwl@hotmail.com (L.W.W.L.); jarett35@gmail.com (J.J.H.T.); clarabelleagh@outlook.com (C.G.H.A.); winnieng2201@gmail.com (W.N.); john\_zhu@np.edu.sg (C.Z.); lau\_quek\_choon@np.edu.sg (Q.C.L.)
- <sup>4</sup> Department of Surgery, National University of Hospital, Tower Block, 1E Kent Ridge Road, Singapore 119228, Singapore; surlcn@nus.edu.sg
- \* Correspondence: micleeyk@nus.edu.sg

**Abstract:** With increasing globalisation, various diets from around the world are readily available in global cities. This study aimed to verify if multiethnic dietary habits destabilised the gut microbiome in response to frequent changes, leading to readily colonisation of exogenous microbes. This may have health implications. We profiled Singapore young adults of different ethnicities for dietary habits, faecal type, gut microbiome and cytokine levels. Subjects were challenged with *Lactobacillus casei*, and corresponding changes in microbiome and cytokines were evaluated. Here, we found that the majority of young adults had normal stool types (73% Bristol Scale Types 3 and 4) and faecal microbiome categorised into three clusters, irrespective of race and gender. Cluster 1 was dominated by *Bacteroides*, Cluster 2 by *Prevotella*, while Cluster 3 showed a marginal increase in *Blautia*, *Ruminococaceae* and *Ruminococcus*, without a predominant microbiota. These youngsters in the three faecal microbiome clusters preferred Western high sugary beverages, Southeast Asian plant-rich diet and Asian/Western diets in rotation, respectively. Multiethnic dietary habits (Cluster 3) led to a gut microbiome without predominant microbiota yet demonstrated colonisation resistance to *Lactobacillus*. Although *Bacteroides* and *Prevotella* are reported to be health-promoting but also risk factors for some illnesses, Singapore-style dietary rotation habits may alleviate *Bacteroides* and *Prevotella* associated ill effects. Different immunological outcome was observed during consumption of the lactobacilli among the three microbiome clusters.

**Keywords:** cytokines; faecal microbiome; dietary habits; probiotics; immune response; multicultural dietary habit



**Citation:** Khine, W.W.T.; Teo, A.H.T.; Loong, L.W.W.; Tan, J.J.H.; Ang, C.G.H.; Ng, W.; Lee, C.N.; Zhu, C.; Lau, Q.C.; Lee, Y.-K. Gut Microbiome of a Multiethnic Community Possessed No Predominant Microbiota. *Microorganisms* **2021**, *9*, 702. <https://doi.org/10.3390/microorganisms9040702>

Academic Editor: Francesco Di Pierro

Received: 1 March 2021

Accepted: 24 March 2021

Published: 29 March 2021

**Publisher's Note:** MDPI stays neutral with regard to jurisdictional claims in published maps and institutional affiliations.



**Copyright:** © 2021 by the authors. Licensee MDPI, Basel, Switzerland. This article is an open access article distributed under the terms and conditions of the Creative Commons Attribution (CC BY) license (<https://creativecommons.org/licenses/by/4.0/>).

## 1. Introduction

Interactions between gut microbes and the human host are expected because of their lifelong association and proximity. Indeed, gut microbiome has been reported to play vital roles in the physiological functions and wellbeing of people [1,2]. *Bifidobacterium* and *Bacteroides* have been aligned with the maturation of host immunity in earlier life [3,4] correction of GI disorders associated with colitis [5], as well as behavioural and physiological abnormalities associated with neurodevelopment disorders [6]. *Prevotella* was reported as positively interfering in energy homeostasis and glucose control [7,8]. The first wave of gut microbes arrives mostly through vertical transmission from mother to child [9]. Upon introduction of solid foods, dietary habit has been demonstrated as the major determining factor in gut microbiome composition, in studies comparing the microbiome of people

across geographical regions and of different ethnicities [10–13]. Overall, high meat protein and fat, high sugar, non-resistant starch Western and Eastern Asian diets are associated with a *Bacteroides–Bifidobacterium* dominated gut microbiome [10–13], whereas the plant-, fiber- and carbohydrate- (high in resistant starch) rich diet of Southeast Asian and African type favours *Prevotella* in the gut microbiome [10–13]. These associations may be due to the provision of metabolisable nutrients and the resulting microenvironment. Establishment of the respective stable microbiome compositions facilitates colonisation resistance, in protecting the gut from being colonised by undesirable enteric pathogens arriving with foods [14].

Today, foods around the world are readily available in global cities, such as Singapore, where people consume foods of different origins in random rotation. It was the aim of this study to verify if Singapore's multiethnic dietary habit would destabilised gut microbiome in response to frequent changes, which may allow readily colonisation of exogenous microbes introduced orally. This may have health implications. In this study, the faecal microbiome and dietary habits of young Singaporeans were profiled and their associations were evaluated. The responses of each diet-determined microbiome cluster to an invading microbe (oral consumption of *Lactobacillus*) were assessed as an intervention model to study the gut microbiota structural stability and gut immune response to the invading microbe. Lactobacilli are bacteria with generally regarded as safe (GRAS) status and have been demonstrated to modulate the gut microbiome profile and immune functions as probiotics.

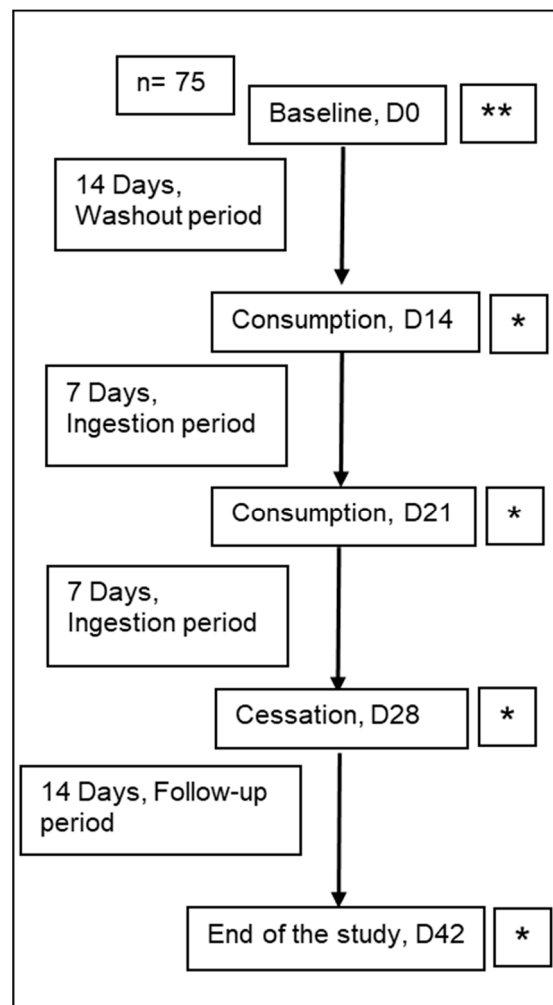
## 2. Materials and Methods

### 2.1. Study Design

A longitudinal randomised study was performed on 75 healthy young adults with an average age of  $19.2 \pm 1.9$  years (18–30 years) of both genders (male:  $n = 30$ , female:  $n = 45$ ), and ethnicities (Chinese:  $n = 61$ , Malay:  $n = 8$ , Indian:  $n = 2$ , Caucasian:  $n = 1$ , Filipino:  $n = 1$ , Korean:  $n = 1$ , Vietnamese:  $n = 1$ ). Their BMI were  $21.4 \pm 2.9$  at the baseline of the study. The subjects were recruited from a tertiary institution to minimise age, body weight and other confounding factors. They were instructed to maintain their dietary habit and lifestyle during the study. The total 42-days study included 14 days washout period (baseline; timepoint 1), 14 days ingestion period (two time points of 7 days apart each) and 14 days follow-up period (timepoint 4). At baseline and follow-up periods, the subjects abstained from the consumption of probiotic products. During the ingestion period, 100 mL of fermented milk containing the *Lactobacillus casei* ( $1 \times 10^{10}$  CFU/mL) was provided every morning for 14 days. The dosage and period of consumption were chosen with reference to the Probiotics Fact Sheet for Health Professionals of the National Institutes of Health Office of Dietary Supplements 2020. The *Lactobacillus casei* was isolated from a local fermented food, identified by API 50 CHL kit (Biomérieux API), and thus is generally regarded as safe (Joint FAO/WHO Expert Committee on Food Additives). A *Lactobacillus* was chosen in this study for lactobacilli have been widely reported to modulate gut microbiome and host physiology (immunity). Milk was chosen as the culture and delivery medium, for dairy products were widely consumed among the subjects (consumed 2–12 times a week). Faecal samples were collected a total of four times at the end of each period. Foods frequency survey was collected at the baseline. Stool characteristics, frequency of defecation, water consumption and medications were recorded daily during the study. The protocol of the study is summarised in the following flow chart (Figure 1).

Inclusion criteria were 18–30 years old healthy adults who had normal BMI, no history of gastrointestinal disorder, not on long-term medication, no planning for overseas trip, able to drink the fermented milk with *Lactobacillus casei* everyday during the study period, able to abstain from any other fermented food products during the study period, and able to sign the informed written consent form. Exclusion criteria in the study were if the participants have allergy or intolerance to a special diet, using antibiotics, antimycotics, antidiarrheal or laxative medication in the 30 days prior to the study, lack of compliance

with the study protocol, or participating in any other studies within two weeks prior to the study.



**Figure 1.** Flow chart of study design. Total 42 days of study, 14 days washout period, 14 days ingestion period and 14 days follow-up period. \*\* Food Frequency Questionnaire. \* Faecal samples collection. D = Day,  $n = 75$ .

## 2.2. Food Frequency Questionnaire

All the subjects completed an in-house food frequency questionnaire (FFQ) (Supplementary Text S1) at baseline. Only 35 FFQ answers were able to be analyzed in this study due to the qualities of responses and missing data. The food items focused on are carbohydrate-rich foods (rice, noodles, cereals, bread, burger, French fries), protein-rich foods (meats, soy protein products), vegetables, fruits, nuts (peanuts, almonds, cashew, walnuts, macadamia, chestnuts), and beverages (coffee, tea, soft drinks, juices). The frequencies of food items that belonged to the same food category were summed up and the total frequency of food items was calculated per week.

## 2.3. Faecal Sample Collection and DNA Extraction

Approximately 1 g of faeces was collected and preserved in a collection tube containing 2 mL of RNeasy Lysis Buffer (Ambion Inc., Austin, TX, USA). A total of 75 faecal samples were collected. After weighing the samples, the faecal homogenate was diluted 10 times with RNeasy Lysis Buffer and 0.2 mL was washed with phosphate-buffered saline (PBS) (Axil Scientific Pte Ltd., Singapore, Singapore) which was later treated with Tris-SDS and TE-saturated phenol (Sigma-Aldrich, Cor. St. Louis, MO, USA) solution. After vigorously shaking, the

supernatant was mixed with phenol/chloroform/isoamyl alcohol (25:24:1) (Sigma-Aldrich, Cor., St. Louis, MO, USA) followed by homogenisation. Sodium acetate and isopropanol precipitated DNA was washed with 70% ethanol. Once dried, the pellet was eluted in TE buffer.

#### 2.4. 16s rRNA DNA Sequencing

After DNA was quantified and calculated for polymerase chain reaction (PCR), the normalized 12.5 ng DNA was amplified with KAPA HiFi™ HotStart ReadyMix kit (Roche life science, Inc., Wilmington, MA, USA) at v3 and v4 regions of the 16s rRNA gene. Amplified PCR products were purified with Agencourt® AMPure XP beads (Beckman Coulter, Inc., Fullerton, CA, USA). The amplicons were added Nextera XT indices and adapter sequences. After two rounds of PCR, the DNA was purified again with the beads and eluted in Tris buffer. The library was quantified with Quanti-iT™ PicoGreen® dsDNA kit (Invitrogen, Inc., Carlsbad, CA, USA) and qualified with Agilent high sensitivity DNA kit (Agilent Technologies, Inc., Santa Clara, CA, USA) in Agilent 2100 bioanalyzer (Agilent Technologies, Inc., Santa Clara, CA, USA). All the libraries were pooled and quantified with KAPA library quantification kit (Roche life science, Inc., Wilmington, MA, USA) in the ABI 7500 real-time PCR system (Thermo Fisher Scientific, Inc., Waltham, MA, USA). The pooled library was denatured and diluted with NaOH and hybridisation buffer (HT1) (Illumina, Inc., San Diego, CA, USA) until the required titrated concentration. The denatured amplicon library was spiked with the PhiX control library (Illumina, Inc., San Diego, CA, USA) and run in Miseq sequencer (Illumina, Inc., San Diego, CA, USA).

#### 2.5. Bioinformatics Analysis and Clustering

Quantitative insights into microbial ecology (QIIME) tool version 1.9.1 [15] was used for 16 s rRNA DNA sequence data. The selected paired reads were filtered and resulted in chimeric sequences by USEARCH v6.1 [16]. OTUs were picked by the open reference method and matched with 97% similarity sequences at Greengenes v13\_8 database. Summarised taxa of relative abundance of OTUs revealed the bacterial genera in each sample. Alpha diversity indices were calculated using the OTU table referenced by the same database tree. Chao 1 and Shannon indices for alpha diversity were presented in this study. Unweighted and weighted UniFrac distance matrices for beta diversity were analysed using R package [17].

According to Entero-typing methods [18,19], the Jensen-Shannon distance (JSD) matrix was calculated using the relative abundance of bacterial genera data of Timepoint 2 in R v4. Clustering was performed by the partitioning around medoids (PAM) algorithm. The optimal number of clusters was estimated by Calinski-Harabasz (CH) index and validated by the individual and average silhouette coefficient (Si). Three classified clusters were named Cluster 1 ( $n = 31$ ), Cluster 2 ( $n = 14$ ) and Cluster 3 ( $n = 30$ ). The assigned cluster to individual samples of Timepoint 2 was applied for further visualisation and categorisation of remaining samples.

A constrained Redundancy Analysis (RDA) based on the square root of Bray-Curtis distances (db-RDA) was performed using the relative abundance of genera data by the Canoco5 software package (Microcomputer Power Co, Ithaca, NY, USA). The principal coordinate analysis (PCoA) plots using unweighted and weighted UniFrac distances were visualised for beta diversity analysis by R v4.

#### 2.6. Faecal Water Cytokines Analysis

One volume of faecal homogenate was treated with two volumes of 0.01 M Phenyl-methyl-sulfonyl fluoride (PMSF) (Sigma-Aldrich, St. Louis, MO, USA), 1% Bovine Serum Albumin (BSA) and PBS solution. 10 µL of supernatant was diluted 1:3 ratio in assay diluent 1 of the LUNARIS™ Human 11-Plex cytokine kit (AYOXXA Biosystems, Cologne, Germany) and loaded onto a LUNARIS™ BioChip with its standards and blanks. The remaining procedures were followed as per the manufacturer's guide. Fluorescence from each well of

BioChip was read by a fluorescence microscope (Zeiss Axio Imager M2, Carl Zeiss Microscopy, Oberkochen, Germany) and quantified using the LUNARIS™ analysis. 11 cytokines, namely, interleukins (IL) 1- $\beta$ , -2, -4, -5, -6, -8, -10, -12, granulocyte-macrophage colony-stimulating factor (GM-CSF), interferon gamma (IFN $\gamma$ ) and tumour necrosis factor alpha (TNF $\alpha$ ) were identified for 72 faecal water samples (Cluster 1:  $n = 30$ ; Cluster 2:  $n = 14$ ; Cluster 3:  $n = 28$ ) for four time points. One sample was unable to analyse at Timepoint 2 of Cluster 3 due to the insufficient amount. The concentration of each sample in pg/mL was calculated and converted to pg in g of wet weight of faeces in the collection tube by multiplied the dilution factor. The lower limit of quantification (LLOQ) was used as a cut-off.

### 2.7. Statistical Analysis

To compare the differences of the bacterial community in three clusters, ethnicities, genders and Bristol stool scales shown in the db-RDA plot, a permutational multivariate analysis of variance (PERMANOVA) was performed using the pairwiseAdonis R package [20]. Adjusted  $p$  values were derived from the post hoc Bonferroni multiple pairwise test and permutation test at 4999. All the data were checked for normality and subsequently analysed by the appropriate statistical methods. Individual major bacterial genera abundances (>1% of total OTU) and frequency of food items were analysed using a non-parametric Mann Whitney U test to compare the different clusters. To identify the correlations between abundances of the major bacteria and total frequency of food items, the non-parametric Spearman correlation test was performed using 35 same samples of bacteria and FFQ data (Cluster 1:  $n = 9$ ; Cluster 2:  $n = 10$ ; Cluster 3:  $n = 16$ ). One-way analysis of variance (ANOVA) and Bonferroni multiple comparisons tests were applied for alpha diversity analysis to compare the clusters and time points. The comparison of bacteria abundances for four time points in each cluster was done by non-parametric matched test of Friedman and Nemenyi post hoc multiple pairwise comparison tests. The mixed-effects model or two-way repeated measures ANOVA followed by Bonferroni multiple comparisons tests were performed for the comparison of cytokines in different time points. All the statistical analyses were performed using GraphPad Prism 8 (GraphPad Software Inc., San Diego, CA, USA).

## 3. Results

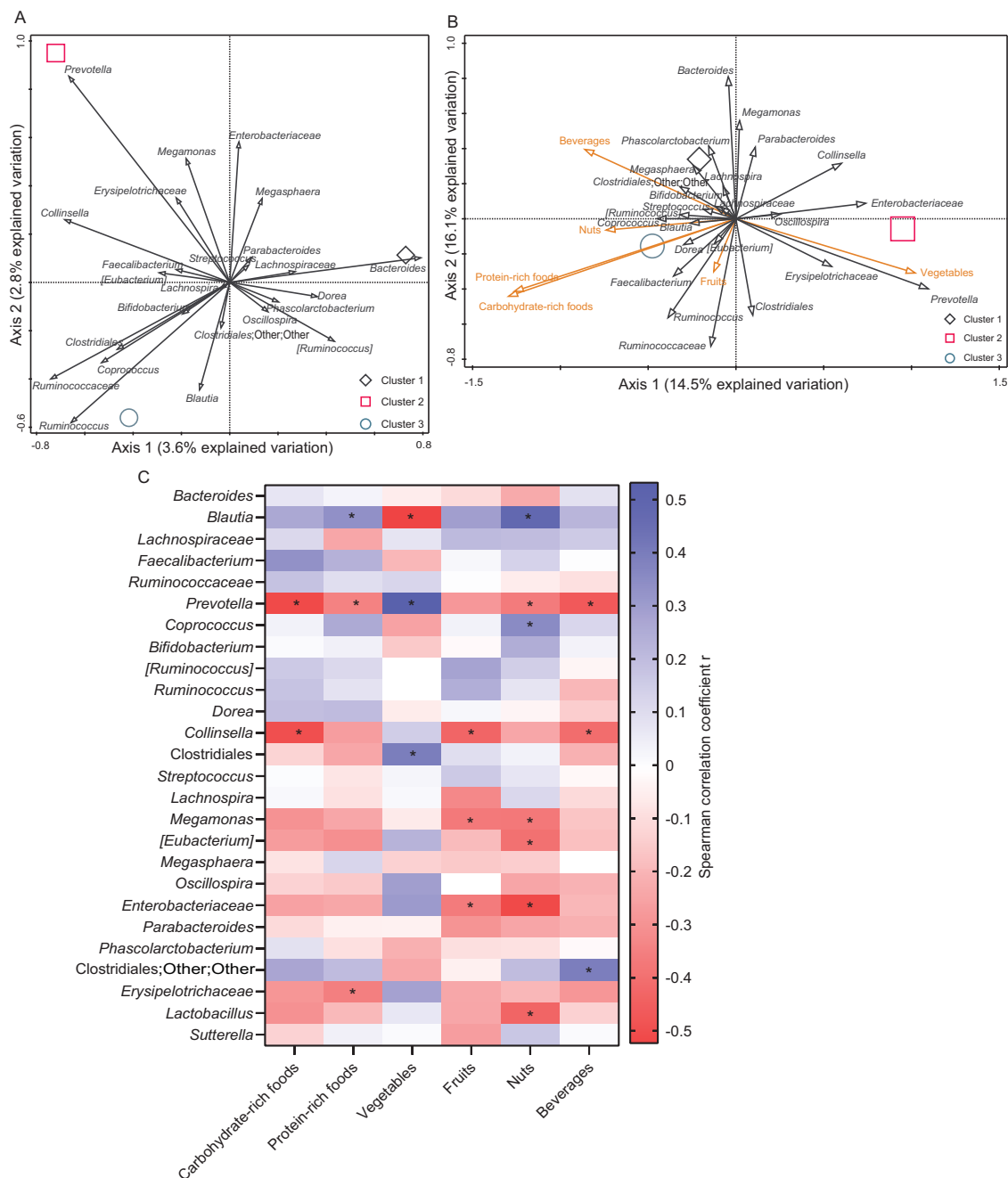
### 3.1. Clustering of Basal GI Microbiome

The faecal microbiome of Singapore young adults was segregated into three clusters (Figure 2A, Supplementary Table S1). Cluster 1 was dominated by *Bacteroides*, which constitute 30% of the total operational taxonomical units (OTU), whereas *Bacteroides* in Cluster 2 and 3 constituted 8% and 12%, respectively, significantly lower than Cluster 1 (Supplementary Tables S2 and S3). The abundance of *Bacteroides* in Cluster 1 was traded off by a reduced fraction of *Ruminococaceae* and *Prevotella*, as compared to Clusters 2 and 3. Cluster 2 was dominated by *Prevotella* (21% of total OTUs). Whereas *Prevotella* in Cluster 1 and 3 constituted only <1% and 1% of total OTUs, *Bacteroides* and *Ruminococcus* were the lowest in Cluster 2 among the three clusters. Cluster 3 does not have a predominant microbiota, but with statistically higher proportion of *Blautia* (16% vs. Cluster 1, 12%, and Cluster 2, 12%), *Ruminococaceae* (8% vs. Cluster 1, 3%, and Cluster 2, 6%) and *Ruminococcus* (4% vs. Cluster 1, 1%, and Cluster 2, 1%). This showed a comparatively even distribution of major microbiota in Cluster 3.

### 3.2. Dietary Composition and Habit

In general, subjects in the three clusters consumed significantly different food types (Figure 2B), mainly sugary beverages, carbohydrate-rich and protein-rich foods, fruits, nuts, and vegetables (Figure 2B, Supplementary Tables S4 and S5). Cluster 1 consumed more sugary beverages ( $16.11 \pm 6.82$  per week), carbohydrate-rich ( $30.72 \pm 12.19$  per week) and protein-rich ( $35.94 \pm 13.68$  per week) foods mostly in the form of Western fast foods,

with a lower frequency of vegetables ( $5.22 \pm 3.03$  per week) as compared to Cluster 2 (carbohydrate  $18.38 \pm 7.60$ , protein  $23.96 \pm 14.53$ , vegetables  $11.00 \pm 4.57$  per week).



**Figure 2.** (A) Composition of major faecal microbiota and (B) distribution of dietary consumption and major faecal microbiota in three clusters at baseline. Species biplots of distance-based redundancy analysis (db-RDA) based on the square root Bray-Curtis distance matrix showed the distribution of faecal bacterial genera and the frequency of food items consumption per week in three clusters. The relative abundance of major (>1%) faecal bacterial genera (black arrows) and dietary consumption (orange arrows) shown here are concentrated with the respective arrow. The percentages of axes explain the compositional variation of the respective axis. The distances between each pair of clusters were tested for significance by permutational multivariate analysis of variance (PERMANOVA) and Bonferroni’s multiple comparison pairwise test at 4999 permutations. Different symbols represent the types of clusters. (C) Correlation between the frequency of dietary consumption per week (X-axis) and major (>1% of total OTUs) faecal bacteria (Y-axis) at baseline. Spearman correlation coefficient *r* values in gradient scales were plotted and presented as a heatmap. The significantly different correlations (two-tailed  $p < 0.05$ ) were marked with asterisks \*.

The diet of Cluster 2 was typically of the plant-rich Southeast Asian type (vegetables), and Cluster 3 adopted the typical dietary habit of Singaporeans in interchanging Western and Asian foods. Overall, cluster 2 ate the lowest frequency of most food types (1 out of 6) among all clusters. However, it consumed more vegetables ( $11.00 \pm 4.57$  per week) as compared to Cluster 1 (vegetables  $5.22 \pm 3.03$  per week) and Cluster 3 (vegetables  $5.53 \pm 2.57$  per week). As indicated in Supplementary Table S5, Cluster 3 consumed the highest frequency of most food types (4 out of 6). Carbohydrate-rich and protein-rich foods, fruits and nuts were the most consumed foods in cluster 3 among all clusters, but the intermediate frequency of sugary beverages and vegetables compared to the other two clusters (Supplementary Tables S4 and S5). Thus, Cluster 3 is located in a different plane and between Clusters 1 and 2 in the square root of Bray Curtis distance-based Redundancy Analysis (db-RDA) (Figure 2B), although the adjusted *p*-value was not significantly different from Cluster 1 (Supplementary Table S6).

### 3.3. Correlation between Diet and Microbiota

In the heatmap correlation between major faecal bacteria and weekly frequency of food type consumption (Figure 2C), *Bacteroides* was found to correlate positively although not statistically significantly with carbohydrate-rich and protein-rich foods and sugary beverages. *Prevotella* was found to be positively and significantly correlated with vegetables, and negatively correlated with carbohydrate-rich, protein-rich foods, fruit, nuts, and sugary beverages, whereas *Blautia* positively correlated with carbohydrate-rich, protein-rich foods, fruits, nuts and sugary beverages; *Ruminococaceae* positively correlated with carbohydrate-rich, protein-rich foods and vegetables; and *Ruminococcus* positively correlated with carbohydrate-rich, protein-rich foods, fruits and nuts. Other microbiota was positively or negatively correlated with the various food types.

### 3.4. Effects of Ethnicities, Genders and Types of Bristol Stool Scale in Association with GI Microbiome

As shown in Supplementary Figure S1 and Table S7, the major ethnic group in this study was Chinese ( $n = 61$ ), whose faecal microbiome at baseline could be differentiated into three clusters. Malays ( $n = 8$ ) Indians ( $n = 2$ ) were randomly distributed among the three clusters. This might suggest that ethnicity was not a determining factor in the clustering of faecal microbiome among these Singapore youngsters. The rest of the ethnicities, namely Caucasian, Filipino, Korean and Vietnamese, comprised one subject each, and thus could not be accounted for in evaluating the effect of ethnicity.

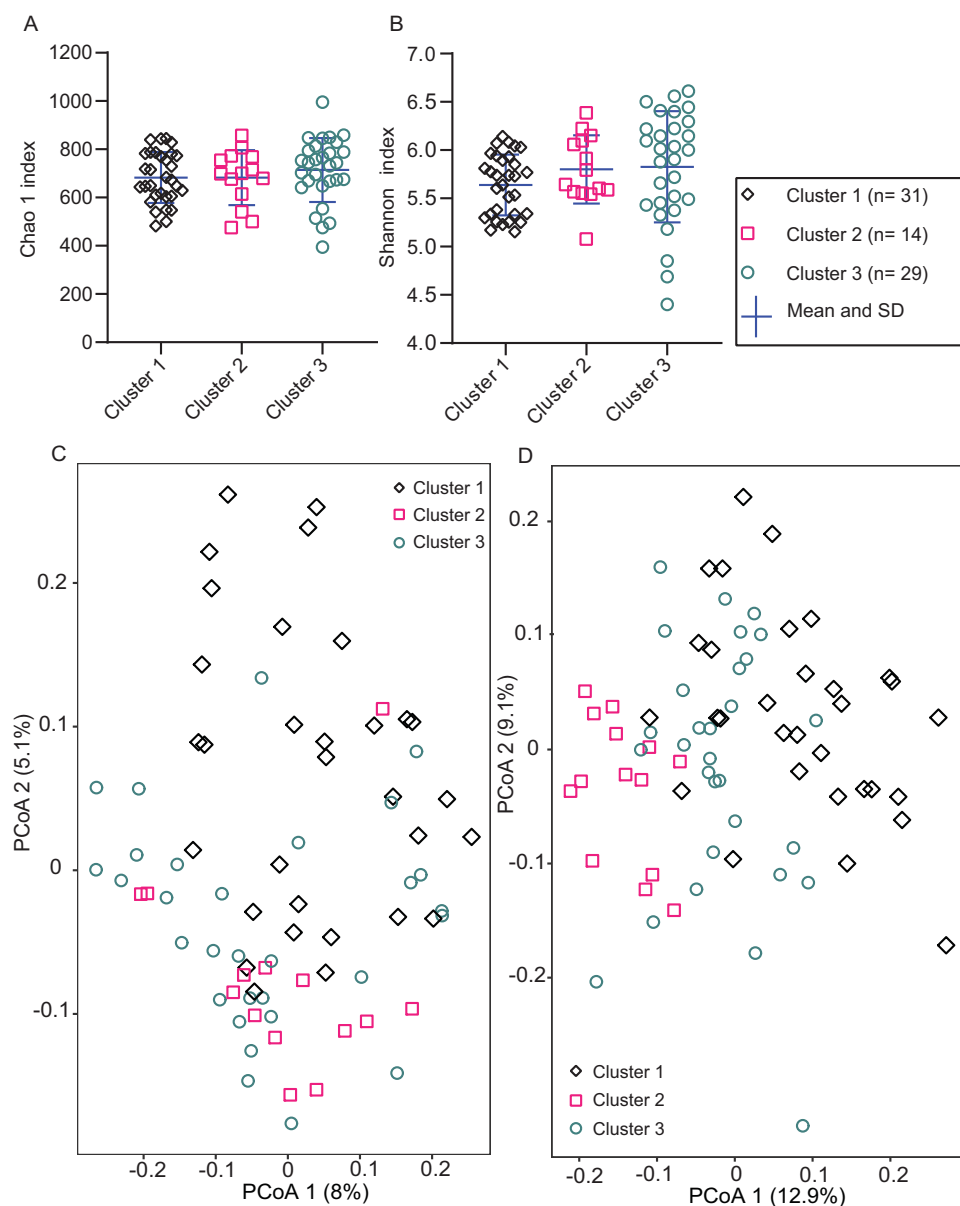
The effect of gender on faecal microbiome is shown in Supplementary Figure S2 and Table S8 where the same gender was found to be significantly differentiated between different clusters at baseline and at all time points. However, both genders intermingled within the same cluster and thus clustering of faecal microbiota at baseline was not influenced by gender.

Among the seven Bristol stool scale types [21], type 3 and 4 stools are normal in stool shape and consistency, but type 1 is constipated and type 6 diarrhoeic stool. Generally, the microbiome in healthy stool (type 4) could be differentiated into clusters according to dietary habits (Supplementary Figure S3). In subjects with type 4 stool, microbiome from Cluster 1 was significantly different from that of Clusters 2 and 3 at baseline (Timepoint 1) and at Timepoint 3 during *Lactobacillus* consumption, and also significantly different from Cluster 3 at Timepoint 4 after the cessation of consumption (Supplementary Tables S9, S11 and S12). In stool type other than 4 (types 1, 2, 3, 5 and 6), the differences in microbiome distribution were not statistically obvious (Supplementary Tables S9–S12), as the subject numbers were few.

### 3.5. Biodiversity of GI Microbiome

Chao 1's and Shannon's indices estimated that the species richness and evenness between the clusters at baseline (Figure 3A,B) and between the time points in each cluster (Supplementary Figure S4A,B) were comparable statistically (Supplementary Tables S13

and S14), apart from, Timepoint 3 in Cluster 1, where there were more species than Timepoint 2 in the same cluster (adjusted  $p=0.014$ ) (Supplementary Table S14).



**Figure 3.** (A) Chao 1's and (B) Shannon's indices of alpha diversity comparing three clusters at baseline. (C) Unweighted, (D) weighted UniFrac principal coordinates analysis (PCoA) for beta diversity comparing three clusters at baseline. Different symbols and colours represent different clusters. Means and SD of indices are presented. One-way analysis of variance (ANOVA) followed by Bonferroni multiple comparisons tests were applied and the indices were not significantly different between the clusters at baseline of each cluster. The distances between each cluster were tested for significant difference by permutational multivariate analysis of variance (PERMANOVA) and Bonferroni's multiple comparison pairwise test at 4999 permutations. Timepoint 1 = baseline; 14 days after washout, SD = standard deviation. Numbers of samples in parenthesis.

Both unweighted (Figure 3C) and weighted (Figure 3D) UniFrac distances were significantly different between the clusters at baseline (Supplementary Table S15) showing that the types and quantities of species were different between clusters at baseline. In Cluster 1, there was significant difference among all time points but no difference between Timepoint 3 and 4 in both unweighted and weighted UniFrac distances (Supplementary



Figure S5 and Table S15). In Cluster 2, each time point varied from the others in both unweighted and weighted UniFrac distances (Supplementary Figure S5 and Table S15). Unweighted and weighted UniFrac distances at all time points were different from each other in Cluster 3, but not between Timepoint 1 and 2 (Supplementary Figure S5 and Table S15).

### 3.6. Introduction of Exogenous *Lactobacillus*: Cluster 1

Most of the faecal major microbiome profile of Cluster 1 did not appear to alter significantly during the *Lactobacillus* administration (Figure 4A). On examination of the respective microbiota which constitutes >1% of total OTUs, only *Lactobacillus* showed a consistent trend ( $p < 0.05$ ) of increase in abundance during the time of *Lactobacillus* consumption (Timepoints 2 and 3) (Supplementary Table S16). Its abundance returned to the baseline (Timepoint 1) on cessation of consumption (Timepoint 4) (Figure 4A).

As shown in Figure 4B and Supplementary Table S19, faecal water cytokines IL-1 $\beta$ , -2, -8, -12 and TNF $\alpha$  were detectable, while IL-4, -5, -6, -10, IFN $\gamma$ , and GM-CSF were near to detection level across all time points in Cluster 1. Both cytokine IL-1 $\beta$  and -2 increased but IL-8, -12 and TNF $\alpha$  decreased at Timepoint 2. At Timepoint 3, IL-1 $\beta$  dropped nearly back to the level of Timepoint 1 but IL-2, -8, -12 and TNF $\alpha$  increased. Apart from IL-8, IL-1 $\beta$ , -2, -12 and TNF $\alpha$  increased among detectable cytokines at Timepoint 4. There was no significant difference in cytokine levels between genders at the same time points (Supplementary Figure S6A and Table S20).

### 3.7. Introduction of Exogenous *Lactobacillus*: Cluster 2

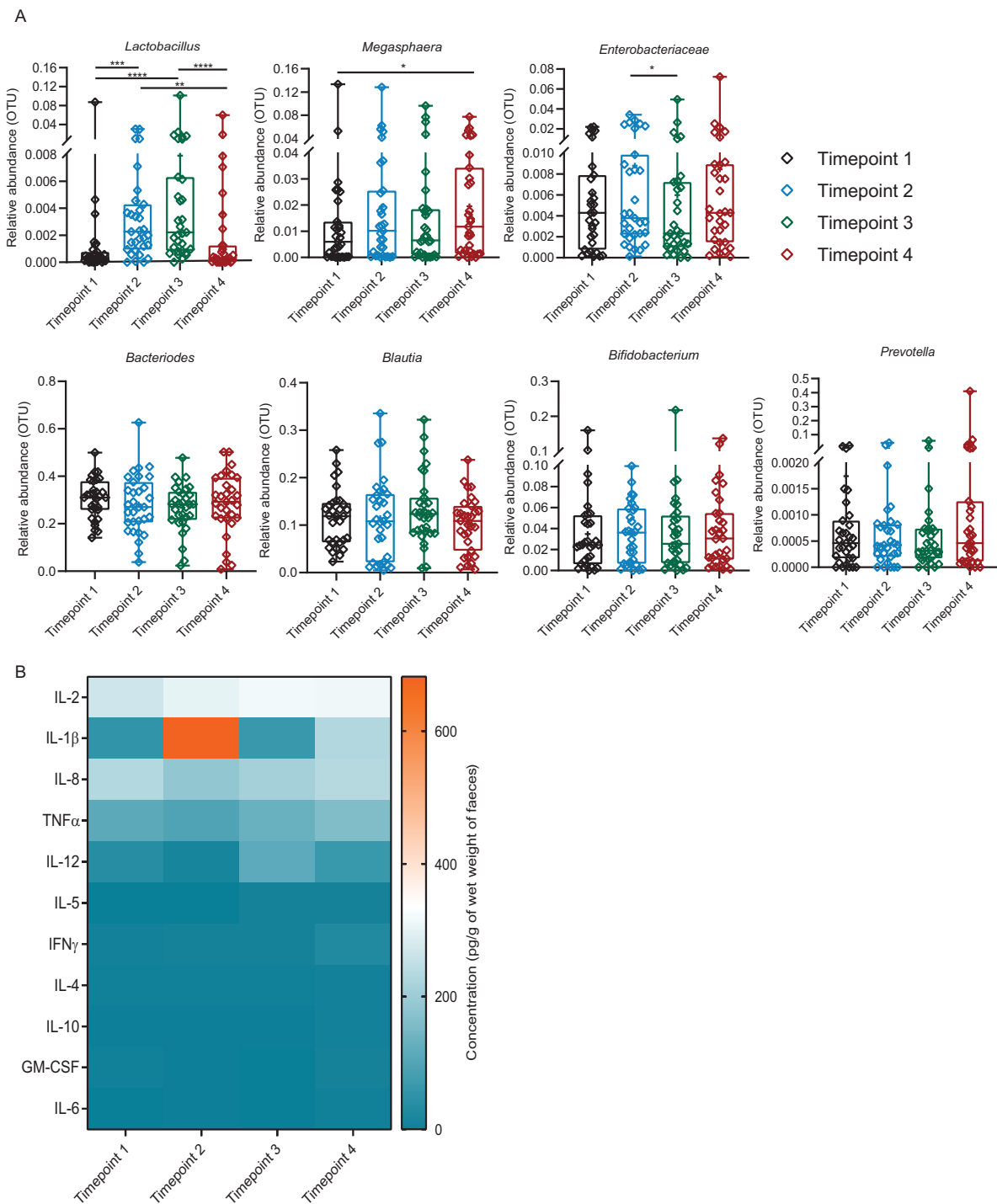
The faecal microbiome in Cluster 2 showed a significant reduction in the abundance of *Prevotella* at Timepoint 4 but not during *Lactobacillus* administration (Figure 5A and Supplementary Table S17). All other major faecal microbiota and *Lactobacillus* did not show significant variation at Timepoints 2, 3 and 4, as compared to their basal levels (Timepoint 1).

The basal (Timepoint 1) levels of faecal water cytokine IL-2, -12 and TNF $\alpha$  in Cluster 2 (Figure 5B) were 3–6 times higher than the basal levels in Cluster 1 (Supplementary Table S19). This implies higher lymphocytic and pro-inflammatory activities. Upon consumption of the lactic acid bacterium, the level of the pro-inflammatory IL-1 $\beta$  and -8 (Timepoint 3) and TNF $\alpha$  (Timepoint 2) increased, but the level of regulatory cytokine IL-2, -12 and TNF $\alpha$  (Timepoint 3) decreased. After cessation of *Lactobacillus* consumption, IL-8 decreased by 3.8 times but, IL-1 $\beta$  increased by 7.2 times. These showed that the *Lactobacillus* had a stronger immune-modulating effect on subjects in Cluster 2 than Cluster 1. No gender differences were found in cytokine levels at the same time point (Supplementary Figure S6B and Table S21).

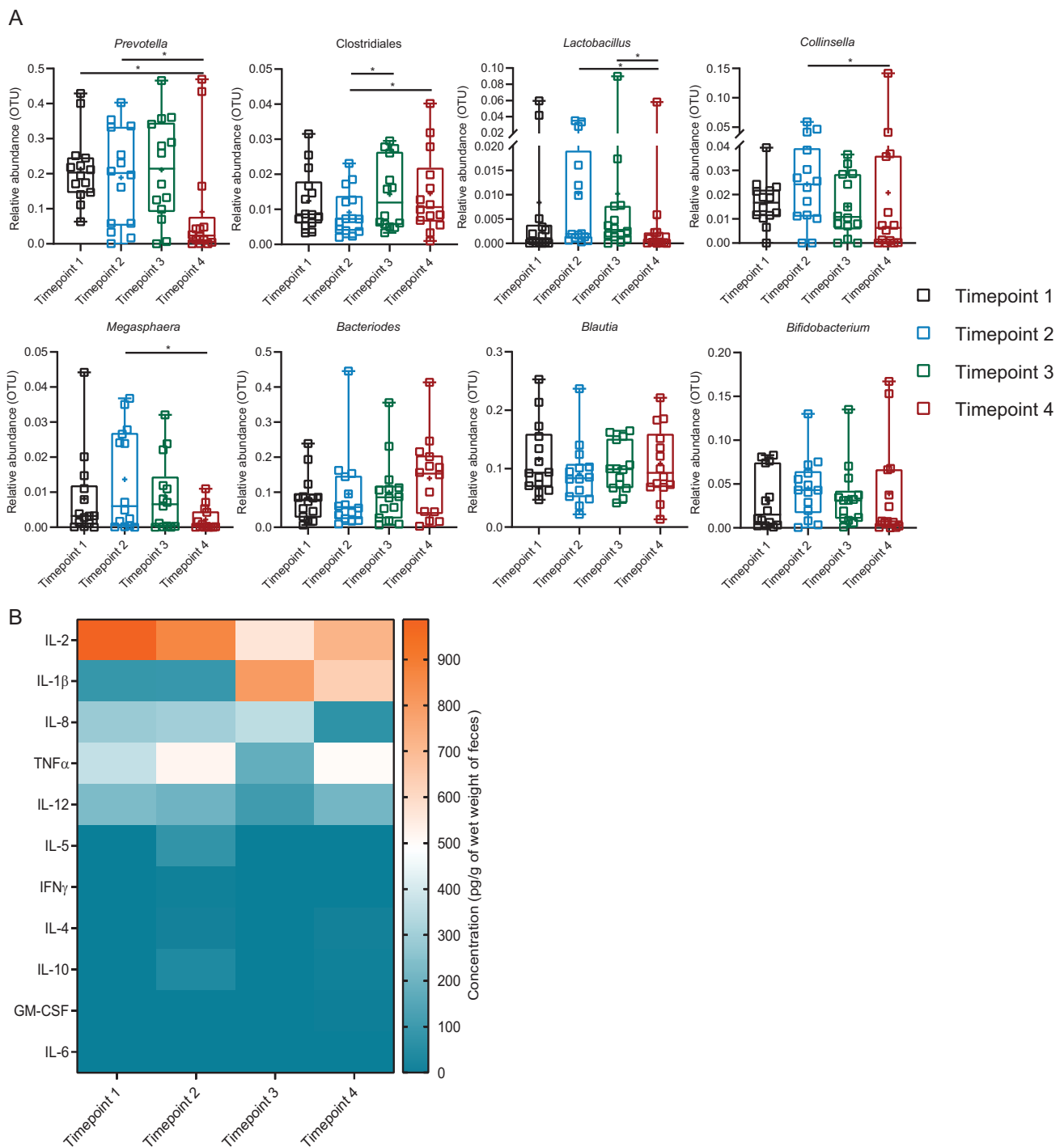
### 3.8. Introduction of Exogenous *Lactobacillus*: Cluster 3

In Cluster 3, upon consumption of the *Lactobacillus*, some of the faecal microbiota profile was attenuated at Timepoint 4, in comparison with Timepoints 1, 2 and 3 (Figure 6A). The differentiation was due to a significant reduction in the abundance of *Bifidobacterium*, *Collinsella* and *Phascolarctobacterium* at Timepoint 4 (Supplementary Table S18). There was no difference in the abundances of other major microbiota, namely *Blautia*, *Prevotella* and *Bacteroides* over all time points. *Lactobacillus* abundance increased during consumption of the *Lactobacillus* (Timepoints 2 and 3) and returned to the basal level at Timepoint 4.

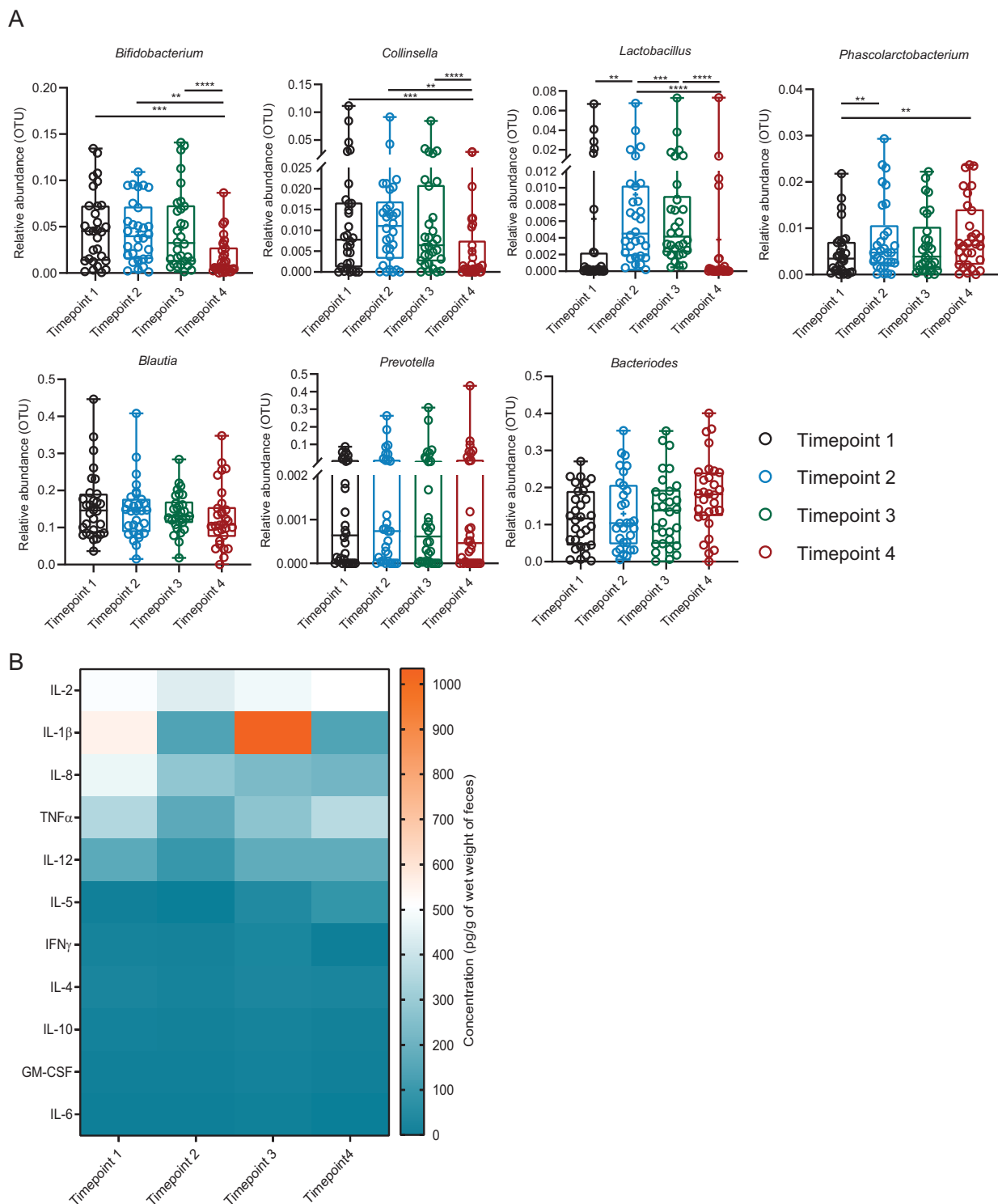
As shown in Figure 6B and Supplementary Table S19, the cytokine IL-8 decreased progressively from Timepoint 1 through Timepoint 4, whereas the level of IL-2, -12 and TNF $\alpha$  decreased at Timepoint 2, but returned to the basal level at Timepoint 4. The level of IL-1 $\beta$  measured was variable across the time points, decreased at Timepoint 2 as compared to Timepoint 1, increased at Timepoint 3 and decreased again at Timepoint 4. The levels of cytokines were comparable between genders at the same time points (Supplementary Figure S6C and Table S22).



**Figure 4.** Profiles of faecal bacterial genera and cytokines of Cluster 1. **(A)** Comparison of relative abundance (OTUs) of seven major faecal bacterial genera of Cluster 1 across the time points. Different colours represent different time points. The bacteria which were significantly different between each time point (tested by Friedman rank-sum and post hoc Nemenyi multiple pairwise comparison tests) are presented as \*\*\*\*  $p < 0.0001$ , \*\*\*  $p \geq 0.0001$ – $p < 0.001$ , \*\*  $p \geq 0.001$ – $p < 0.01$ , \*  $p \geq 0.01$ – $0.05$ . **(B)** Comparison of concentration of faecal water cytokines (pg/g of wet weight of faeces) of Cluster 1 across the time points. Means of concentration are presented. No significant difference in the cytokine levels between the time points were found by two-way analysis of variance (ANOVA) followed by Bonferroni multiple comparisons tests. IL = Interleukin, TNF = Tumour necrosis factor, IFN = Interferon, GM-CSF = Granulocyte-macrophage-stimulating factor. Timepoint 1 = baseline; 14 days after washout, Timepoint 2 = first 7 days after ingestion, Timepoint 3 = second 7 days after ingestion, Timepoint 4 = follow-up; 14 days after non-ingestion.  $n = 31$  for each time point.



**Figure 5.** Profiles of faecal bacterial genera and cytokines of Cluster 2. **(A)** Comparison of relative abundance (OTUs) of eight major faecal bacterial genera of Cluster 2 across the time points. Different colours represent different time points. The bacteria which were significantly different between each time point (tested by Friedman rank-sum and post hoc Nemenyi multiple pairwise comparison tests) are presented as \*  $p \geq 0.01$ – $0.05$ . **(B)** Comparison of concentration of faecal water cytokines (pg/g of wet weight of faeces) of Cluster 2 across the time points. Means of concentration are presented. No significant difference in the cytokine levels between the time points were found by the two-way analysis of variance (ANOVA) followed by Bonferroni multiple comparisons tests. IL = Interleukin, TNF = Tumour necrosis factor, IFN = Interferon, GM-CSF = Granulocyte-macrophage-stimulating factor. Timepoint 1 = baseline; 14 days after washout, Timepoint 2 = first 7 days after ingestion, Timepoint 3 = second 7 days after ingestion, Timepoint 4 = follow-up; 14 days after non-ingestion.  $n = 14$  for each time point.



**Figure 6.** Profiles of faecal bacterial genera and cytokines of Cluster 3. **(A)** Comparison of relative abundance (OTUs) of seven major faecal bacterial genera of Cluster 3 across the time points. Different colours represent different time points. The bacteria which were significantly different between each time point (tested by Friedman rank-sum and post hoc Nemenyi multiple pairwise comparison tests) are presented as \*\*\*\*  $p < 0.0001$ , \*\*\*  $p \geq 0.0001$ – $p < 0.001$ , \*\*  $p \geq 0.001$ – $p < 0.01$ . **(B)** Comparison of concentration of faecal water cytokines (pg/g of wet weight of faeces) of Cluster 3 across the time points. Means of concentration are presented. No significant difference in the cytokine levels between the time points were found by the two-way analysis of variance (ANOVA) followed by Bonferroni multiple comparisons tests. IL = Interleukin, TNF = Tumour necrosis factor, IFN = Interferon, GM-CSF = Granulocyte-macrophage-stimulating factor. Timepoint 1 = baseline; 14 days after washout, Timepoint 2 = first 7 days after ingestion, Timepoint 3 = second 7 days after ingestion, Timepoint 4 = follow-up; 14 days after non-ingestion.  $n = 30$  for each time point.

#### 4. Discussion

The subjects recruited in the study were young adults mostly of the same race (Chinese: 61/75 = 81%), falling within a narrow range of age and basal metabolic rate (BMI). Moreover, subjects of different ethnicities (Malay and Indian) were found within the same microbiome clusters as those of the Chinese. Therefore, possible confounding factors, such as ethnicity, age and obesity, could be eliminated from the interpretation of the biodata and their association. It should be highlighted that *Prevotella* dominated Cluster 2 subjects were not heavier than *Bacteroides* Cluster 1, although BMI has been reported as negatively associated with *Bacteroides* [22]. The body weight of subjects was therefore not followed during the intervention study. Incidentally, most of the subjects provided stools of the healthy normal type (types 3 and 4, 55/75 = 73%), and abnormal stool types were randomly distributed among the three clusters, thus stool type was not a major factor for consideration in the clustering of microbiomes in this study.

Singapore is a multiethnic global city. It is not surprising that despite the Asian ethnicity, 41% of the young adults opted for a Western dietary habit, consuming more sugary beverages, meat, and carbohydrates, often in the form of Western fast foods, such as hamburgers, fried chicken, and potato. Their faecal microbiome is denoted as Cluster 1, dominated by *Bacteroides* (30% of total OTUs), having a microbiota profile like meat-eating Europeans and East Asians [11,12,23,24]. However, 19% of the young adults indulged in traditional Southeast Asian dietary habits, consuming more plant-rich foods, such as vegetables and fermented foods. Their faecal microbiome is denoted as Cluster 2, which was dominated by *Prevotella* (21% of total OTUs), typical of Southeast Asians [10,11]. The remaining belonged to Cluster 3 (40% of total subjects studied), who consumed an intermediary frequency of sugary beverages and vegetables in comparison with Clusters 1 and 2. The high consumption frequency of carbohydrate-rich and protein-rich foods is a reflection of regular consumption of both rice and bread (bun) or potato, and meat as burger and slices cooked with vegetables. Cluster 3 subjects did not possess a predominant bacterium but harboured a comparatively higher proportion of *Blautia* (16% vs. Cluster 1 and Cluster 2, 12% each), *Ruminococaceae* (8% vs. Cluster 1, 3% and Cluster 2, 6%) and *Ruminococcus* (4% vs. Cluster 1 and Cluster 2, 1% each) and thus demonstrated a more evenly distributed microbiome profile. In earlier studies, subjects with a microbiome rich in mucin degrading *Ruminococcus* [12,18] were grouped under an enterotype purported to consume more alcohol and polyunsaturated fats.

Between the two predominant gut microbiota, *Prevotella* may have been diet determined, as it showed a strong correlation with most of the food types (carbohydrate, protein, vegetable, nuts and sugary beverages). The *Bacteroides* may be the secondary respondent, in response to the level of *Prevotella*.

The *Lactobacillus* consumed appeared to either reproduce or enhance the reproduction of endogenous *Lactobacillus* strains in the gastrointestinal tract of subjects in Cluster 1 and 3, as there was an increased abundance of *Lactobacillus* in the faecal samples during the consumption period in the *Lactobacillus* intervention study. The study was not able to verify the origin of this increase in *Lactobacillus* as strain-specific primers were not available. The abundance of *Lactobacillus*, however, could not be sustained and returned to that of the basal level within 14 days of stopping oral supplementation. This suggests that the *Lactobacillus* consumed could not colonise the gastrointestinal tract, a sign of colonisation resistance in the clusters.

The *Lactobacillus* was unable to propagate and colonise the gastrointestinal tract of Cluster 2 individuals, as the abundance of *Lactobacillus* in the faecal samples did not alter significantly throughout the *Lactobacillus* administration. This demonstrates that persistence and colonisation of the exogenous *Lactobacillus* in the gastrointestinal tract of Singapore young adults are basal microbiome and diet dependent. This agrees with our earlier studies [25,26].

The introduction of *Lactobacillus* was not able to alter the profile of major microbiota (>1% of total OTUs) in Cluster 1, demonstrating a stable microbiota structure. Consumption

of the *Lactobacillus* led to a minimal alteration in the level of cytokines. In short, the *Lactobacillus* showed minimal effects on Cluster 1 subjects in terms of microbiota composition and modulation in immune activities.

The introduction of the *Lactobacillus* to subjects in Cluster 2, however, reduced the abundance of *Prevotella* at Timepoint 4 and rendered the microbiota profile to resemble that of Cluster 3. *Lactobacillus* has been reported inhibitory to *Prevotella* [27,28]. The basal faecal water cytokine IL-2, -12 and TNF $\alpha$  levels in Cluster 2 were 3–6 times higher than the basal levels in Cluster 1. This may imply higher lymphocytic and pro-inflammatory activities in this cluster. This agrees with the proposal that gut *Bacteroides* exclude and protect the host from gastrointestinal pathogens [9], thus it may not be surprising that subjects in Cluster 2 depended on immunity for protection. The immunological activities were modulated upon consumption of the *Lactobacillus*, and the pro-inflammatory activities in the gastrointestinal tract seem to migrate from IL-8 neutrophil-mediated (down-regulated 3.8 times at Timepoint 4) to an IL-1 $\beta$  leukocytic mediated (up-regulated 7.2 times) pathway. The clinical relevance is, however, unclear.

Subjects in Cluster 3 consumed Western and Asian foods in rotation randomly, which is typical among Singaporeans [29]. Thus, a wide variation in the food component profile was observed among the subjects. A Singaporean may consume local Southeast Asian breakfast, English morning tea, American fast food lunch, a Japanese snack for afternoon tea, Chinese style dinner, Indian supper, and the sequence may alter the following day. This alternating dietary habit was not able to support a predominant microbiota, as in Clusters 1 and 2. The vacated ecological niches in the gastrointestinal tract were occupied by small but significant increases in the relative abundance of some major microbiota (>1% total OTUs), namely *Blautia*, *Ruminococaceae* and *Ruminococcus*.

Gut microbiota diversity has been proposed as beneficial in maintaining the physiological functions and health of the human host [30,31]. Gut microbiota composition is largely determined by diet [10–13], however, it is difficult to achieve a sufficiently broad range of food types in one single meal to support microbiota diversity. Thus, it is expected that the human gut microbiome is mostly dominated by one microbiota, such as *Bacteroides* or *Prevotella*. The Singapore dietary habit of rotating food types represents an achievable and enjoyable approach in diversifying dietary components and even gut microbiota composition.

The Cluster 3 microbiome structure was not as stable as Cluster 1. Nevertheless, the introduction of the foreign bacterium led only to gradual reduction in the abundance of *Bifidobacterium* and *Collinsella*, but no change among the other major microbiota (>1% total OTUs), and it exhibited colonisation resistance to *Lactobacillus*, as the level of the exogenous *Lactobacillus* was reduced to that of the baseline after cessation of *Lactobacillus* consumption. It should be highlighted that both the alpha and beta diversities (weighted and unweighted) in Cluster 3 across the three time points (during consumption and after cessation of consumption of a large dosage of *Lactobacillus*) remained unchanged, which suggested that the microbiome in Cluster 3 was structurally as stable as that of Clusters 1 and 2. For immunity, except IL-1 $\beta$  at Timepoint 3, consumption of the *Lactobacillus* led to a general reduction of overall lymphocytic and pro-inflammatory activities.

From the perspective of lactic acid bacterium administration, the effect of the *Lactobacillus* on the gut microbiome was basal microbiome dependent. This agrees with our earlier study on the provision of a *Lactobacillus* to people across a wide distance of geographical area, from Mongolia to Singapore [25]. Moreover, the present study showed that immune modulation elicited by the *Lactobacillus* administration was also basal microbiome or immune status dependent. *Lactobacillus* appeared to have a larger immunoregulatory effect on people who belong to Clusters 2 and 3.

The dominating microbiota *Bacteroides* in Cluster 1 has been aligned with health benefits described in the Introduction; however, it is also listed as an independent high-risk factor for many common diseases in developed countries. These include arterial diseases [32,33], type-2 diabetes [34,35], colorectal cancer [36–38], cardiomyopathy [39],

rheumatoid arthritis [40], inflammatory bowel disease [41], Parkinson's disease [42], celiac disease [43] and Alzheimer disease [44]. On the other hand, Cluster 2 microbiome is dominated by *Prevotella*. Despite the fact that it positively interferes in energy homeostasis and glucose control [7,8], *Prevotella* is also implicated directly or indirectly in the causation of many chronic inflammatory diseases. These include periodontitis, bacterial vaginosis, rheumatoid arthritis, metabolic disorders [45], tonsillitis [46], advanced fibrosis non-alcoholic fatty liver disease (NAFLD) [47], cardiometabolic risk [48] and asthma [49]. This study thus brings about a critical question. Since the predominating bacterium, *Bacteroides* and *Prevotella* in Clusters 1 and 2 respectively, is associated with some forms of health benefit but also illness, and Cluster 3 microbiome demonstrated a more even distribution of major microbiota types and colonisation resistance, could Cluster 3 be a healthier microbiome structure? This warrants further study, as a means for the maintenance of healthy status. The relatively high economic standing and excellent medical care may explain Singaporeans being among the world's longest life expectancies at birth [50] (83.5 years according to the 2019 latest data). It could not be ruled out that a diverse microbiome without predominant disease-inducing microbiota contributes to Singaporeans having the status of the longest Healthy Life Expectancy (HALE) at birth [51] (76.2 years according to the 2016 latest data).

As demonstrated in this study, understanding the correlation between the gut microbiome, diet and health in multiethnic communities represents an excellent model system, due to the wider variety of food choices in a population of defined ethnicity, lifestyle and living environment. In summary, alternating dietary types over meals, as in Singaporean dietary habits, represents a practical approach in achieving a broad base dietary composition. This appeared to balance the gut microbiota profile, leading to a non-predominant microbiota type (enterotype).

**Supplementary Materials:** The following are available online at <https://www.mdpi.com/article/10.3390/microorganisms9040702/s1>.

**Author Contributions:** Followings are the list of author contributions: subjects' recruitment, screening and sample collection—L.W.W.L., J.J.H.T., C.G.H.A., W.N., Laboratory experiments—W.W.T.K., A.H.T.T., L.W.W.L., J.J.H.T., C.G.H.A., W.N. Data analysis, visualisation and statistical analysis—W.W.T.K. Study design and methodology—Y.-K.L. and W.W.T.K. Research collaboration and coordination—Y.-K.L., C.Z., Q.C.L. and W.W.T.K. Project administration and supervision—Y.-K.L. and W.W.T.K. Funding acquisition—Y.-K.L. Manuscript writing—Y.-K.L. and W.W.T.K. Manuscript review and editing—C.N.L., C.Z., Q.C.L., Y.-K.L. and W.W.T.K. All authors reviewed the final version of the manuscript. All authors have read and agreed to the published version of the manuscript.

**Funding:** This study has been reviewed and approved by Institutional Review Boards of National University of Singapore and Ngee Ann Polytechnic and informed consent was obtained from all participants.

**Institutional Review Board Statement:** This study was conducted according to the guidelines of the declaration of Helsinki and approved by Institutional Review Board of National University of Singapore (NUS-IRB Ref. No. B-16-054; approved on 8 November 2015).

**Informed Consent Statement:** Informed consent was obtained from all participants involved in the study.

**Data Availability Statement:** All data relevant to this study were submitted as supplementary tables and the sequencing data were deposited at EBI repository (accession no: PRJEB39242).

**Acknowledgments:** The funding was supported by National University of Singapore Principal Investigator's research grant (R-571-000-011-597). The funder had no role in the study design, sample collection, data analysis, and decision on paper publication. We would like to thank all participants in this study. Xiao Jun Ang, Yi Shan Chan, Wei Quan Lee, Sze Yang Quek, Si Hui Tan and Bryan Jun Kai Teo helped in the recruitment of participants and collection of samples.

**Conflicts of Interest:** The authors declared no conflict of interest.

## Abbreviations

GRAS	Generally regarded as safe
IL	Interleukin
TNF $\alpha$	Tumour Necrosis Factor alpha
GM-CSF	Granulocyte-macrophage Colony-Stimulating Factor
IFN $\gamma$	Interferon gamma
BMI	Body Mass Index
OTU	Operational Taxonomic Unit
NAFLD	Non-Alcoholic Fatty Liver Disease
HALE	Healthy Life Expectancy
CFU	Colony Forming Unit
API	Analytical Profile Index
FFQ	Food Frequency Questionnaire
PBS	Phosphate-Buffered Saline
TE	Tris Ethylenediaminetetraacetic acid
HT1	Hybridisation Buffer
NaOH	Sodium hydroxide
PCR	Polymerase Chain Reaction
QIIME	Quantitative Insights Into Microbial Ecology
JSD	Jensen-Shannon distance
PAM	Partitioning Around medoids
CH	Calinski-Harabasz
Si	Silhouette coefficient
db-RDA	distance based Redundancy Analysis
PCoA	principal coordinate analysis
PMSF	Phenyl-methyl-sulfonyl fluoride
BSA	Bovine Serum Albumin
LLOQ	lower limit of quantification
PERMANOVA	Permutational Multivariate Analysis of Variance
ANOVA	Analysis of Variance

## References

- Mulligan, C.M.; Friedman, J.E. Maternal modifiers of the infant gut microbiota: Metabolic consequences. *J. Endocrinol.* **2017**, *235*, R1–R12. [[CrossRef](#)]
- Requena, T.; Martínez-Cuesta, M.C.; Peláez, C. Diet and microbiota linked in health and disease. *Food Funct.* **2018**, *9*, 688–704. [[CrossRef](#)] [[PubMed](#)]
- Pettersen, V.K.; Arrieta, M.-C. Host–microbiome intestinal interactions during early life: Considerations for atopy and asthma development. *Curr. Opin. Allergy Clin. Immunol.* **2020**, *20*, 138–148. [[CrossRef](#)]
- Ruhtula, T.; De Goffau, M.C.; Nieminen, J.K.; Honkanen, J.; Siljander, H.; Hämäläinen, A.-M.; Peet, A.; Tillmann, V.; Ilonen, J.; Niemelä, O.; et al. Maturation of Gut Microbiota and Circulating Regulatory T Cells and Development of IgE Sensitization in Early Life. *Front. Immunol.* **2019**, *10*, 2494. [[CrossRef](#)]
- Mazmanian, S.K.; Round, J.L.; Kasper, D.L. A microbial symbiosis factor prevents intestinal inflammatory disease. *Nat. Cell Biol.* **2008**, *453*, 620–625. [[CrossRef](#)] [[PubMed](#)]
- Hsiao, E.Y.; McBride, S.W.; Hsien, S.; Sharon, G.; Hyde, E.R.; McCue, T.; Codelli, J.A.; Chow, J.; Reisman, S.E.; Petrosino, J.F.; et al. Microbiota Modulate Behavioral and Physiological Abnormalities Associated with Neurodevelopmental Disorders. *Cell* **2013**, *155*, 1451–1463. [[CrossRef](#)]
- De Vadder, F.; Kovatcheva-Datchary, P.; Zitoun, C.; Duchampt, A.; Bäckhed, F.; Mithieux, G. Microbiota-Produced Succinate Improves Glucose Homeostasis via Intestinal Gluconeogenesis. *Cell Metab.* **2016**, *24*, 151–157. [[CrossRef](#)] [[PubMed](#)]
- Soty, M.; Gautier-Stein, A.; Rajas, F.; Mithieux, G. Gut-Brain Glucose Signaling in Energy Homeostasis. *Cell Metab.* **2017**, *25*, 1231–1242. [[CrossRef](#)]
- Khine, W.W.T.; Rahayu, E.S.; See, T.Y.; Kuah, S.; Salminen, S.; Nakayama, J.; Lee, Y.-K. Indonesian children fecal microbiome from birth until weaning was different from microbiomes of their mothers. *Gut Microbes* **2020**, *12*, 1–19. [[CrossRef](#)]
- Khine, W.W.T.; Zhang, Y.; GoJe, G.J.Y.; Wong, M.S.; Liang, M.; Lee, Y.Y.; Cao, H.; Lee, Y.-K. Gut microbiome of pre-adolescent children of two ethnicities residing in three distant cities. *Sci. Rep.* **2019**, *9*, 7831. [[CrossRef](#)]
- Nakayama, J.; Watanabe, K.; Jiang, J.; Matsuda, K.; Chao, S.-H.; Haryono, P.; La-Ongkham, O.; Sarwoko, M.-A.; Sujaya, I.N.; Zhao, L.; et al. Diversity in gut bacterial community of school-age children in Asia. *Sci. Rep.* **2015**, *5*, 8397. [[CrossRef](#)]
- Wu, G.D.; Chen, J.; Hoffmann, C.; Bittinger, K.; Chen, Y.Y.; Keilbaugh, S.A.; Bewtra, M.; Knights, D.; Walters, W.A.; Knight, R.; et al. Linking Long-Term Dietary Patterns with Gut Microbial Enterotypes. *Science* **2011**, *334*, 105–108. [[CrossRef](#)]



13. Yang, Q.; Liang, Q.; Balakrishnan, B.; Belobrajdic, D.P.; Feng, Q.-J.; Zhang, W. Role of Dietary Nutrients in the Modulation of Gut Microbiota: A Narrative Review. *Nutrients* **2020**, *12*, 381. [[CrossRef](#)]
14. Ducarmon, Q.R.; Zwitterink, R.D.; Hornung, B.V.H.; Van Schaik, W.; Young, V.B.; Kuijper, E.J. Gut Microbiota and Colonization Resistance against Bacterial Enteric Infection. *Microbiol. Mol. Biol. Rev.* **2019**, *83*. [[CrossRef](#)]
15. Caporaso, J.G.; Kuczynski, J.; Stombaugh, J.; Bittinger, K.; Bushman, F.D.; Costello, E.K.; Fierer, N.; Peña, A.G.; Goodrich, J.K.; Gordon, J.I.; et al. QIIME Allows Analysis of High-Throughput Community Sequencing data. *Nat. Methods* **2010**, *7*, 335–336. [[CrossRef](#)] [[PubMed](#)]
16. Edgar, R.C. Search and clustering orders of magnitude faster than BLAST. *Bioinformatics* **2010**, *26*, 2460–2461. [[CrossRef](#)] [[PubMed](#)]
17. McMurdie, P.J.; Holmes, S. phyloseq: An R Package for Reproducible Interactive Analysis and Graphics of Microbiome Census Data. *PLoS ONE* **2013**, *8*, e61217. [[CrossRef](#)]
18. Arumugam, M.; Raes, J.; Pelletier, E.; Le Paslier, D.; Yamada, T.; Mende, D.R.; Fernandes, G.R.; Tap, J.; Bruls, T.; Batto, J.M.; et al. Enterotypes of the human gut microbiome. *Nature* **2011**, *473*, 174–180. [[CrossRef](#)]
19. Costea, P.I.; Hildebrand, F.; Arumugam, M.; Bäckhed, F.; Blaser, M.J.; Bushman, F.D.; De Vos, W.M.; Ehrlich, S.D.; Fraser, C.M.; Hattori, M.; et al. Enterotypes in the landscape of gut microbial community composition. *Nat. Microbiol.* **2018**, *3*, 8–16. [[CrossRef](#)] [[PubMed](#)]
20. Martinez, A.P. PairwiseAdonis: Pairwise Multilevel Comparison Using ADONIS. R Package Version 0.3. 2019. Available online: <https://github.com/pmartinezarbizu/pairwiseAdonis> (accessed on 20 December 2020).
21. Lewis, S.J.; Heaton, K.W. Stool Form Scale as a Useful Guide to Intestinal Transit Time. *Scand. J. Gastroenterol.* **1997**, *32*, 920–924. [[CrossRef](#)]
22. Yang, J.-Y.; Lee, Y.-S.; Kim, Y.; Lee, S.-H.; Ryu, S.; Fukuda, S.; Hase, K.; Yang, C.-S.; Lim, H.S.; Kim, M.-S.; et al. Gut commensal *Bacteroides acidifaciens* prevents obesity and improves insulin sensitivity in mice. *Mucosal Immunol.* **2017**, *10*, 104–116. [[CrossRef](#)]
23. De Filippo, C.; Cavalieri, D.; Di Paola, M.; Ramazzotti, M.; Poulet, J.B.; Massart, S.; Collini, S.; Pieraccini, G.; Lionetti, P. Impact of diet in shaping gut microbiota revealed by a comparative study in children from Europe and rural Africa. *Proc. Natl. Acad. Sci. USA* **2010**, *107*, 14691–14696. [[CrossRef](#)]
24. Yatsunencko, T.; Rey, F.E.; Manary, M.J.; Trehan, I.; Dominguez-Bello, M.G.; Contreras, M.; Magris, M.; Hidalgo, G.; Baldassano, R.N.; Anokhin, A.P.; et al. Human gut microbiome viewed across age and geography. *Nature* **2012**, *486*, 222–227. [[CrossRef](#)] [[PubMed](#)]
25. Hou, Q.; Zhao, F.; Liu, W.; Lv, R.; Khine, W.W.T.; Han, J.; Sun, Z.; Lee, Y.-K.; Zhang, H. Probiotic-directed modulation of gut microbiota is basal microbiome dependent. *Gut Microbes* **2020**, *12*, 1–20. [[CrossRef](#)]
26. Khine, W.; Ang, X.; Chan, Y.; Lee, W.; Quek, S.; Tan, S.; Teo, H.; Teo, J.; Lau, Q.; Lee, Y.-K. Recovery of *Lactobacillus casei* strain Shirota (LcS) from faeces of healthy Singapore adults after intake of fermented milk. *Benef. Microbes* **2019**, *10*, 721–728. [[CrossRef](#)]
27. Atassi, F.; Brassart, D.; Grob, P.; Graf, F.; Servin, A.L. *Lactobacillus* strains isolated from the vaginal microbiota of healthy women inhibit *Prevotella bivia* and *Gardnerella vaginalis* in coculture and cell culture. *FEMS Immunol. Med. Microbiol.* **2006**, *48*, 424–432. [[CrossRef](#)]
28. Vuotto, C.; Barbanti, F.; Mastrantonio, P.; Donelli, G. *Lactobacillus brevis* CD2 inhibits *Prevotella melaninogenica* biofilm. *Oral Dis.* **2014**, *20*, 668–674. [[CrossRef](#)]
29. Naidoo, N.; Van Dam, R.M.; Ng, S.; Tan, C.S.; Chen, S.; Lim, J.Y.; Chan, M.F.; Chew, L.; Rebello, S.A. Determinants of eating at local and western fast-food venues in an urban Asian population: A mixed methods approach. *Int. J. Behav. Nutr. Phys. Act.* **2017**, *14*, 1–12. [[CrossRef](#)] [[PubMed](#)]
30. Karkman, A.; Lehtimäki, J.; Ruokolainen, L. The ecology of human microbiota: Dynamics and diversity in health and disease. *Ann. N. Y. Acad. Sci.* **2017**, *1399*, 78–92. [[CrossRef](#)] [[PubMed](#)]
31. Lloyd-Price, J.; Abu-Ali, G.; Huttenhower, C. The healthy human microbiome. *Genome Med.* **2016**, *8*, 1–11. [[CrossRef](#)] [[PubMed](#)]
32. Kim, S.; Rigatto, K.; Gazzana, M.B.; Knorst, M.M.; Richards, E.M.; Pepine, C.J.; Raizada, M.K. Altered Gut Microbiome Profile in Patients With Pulmonary Arterial Hypertension. *Hypertension* **2020**, *75*, 1063–1071. [[CrossRef](#)]
33. Yoshida, N.; Yamashita, T.; Hirata, K.-I. Gut Microbiome and Cardiovascular Diseases. *Diseases* **2018**, *6*, 56. [[CrossRef](#)] [[PubMed](#)]
34. Gurung, M.; Li, Z.; You, H.; Rodrigues, R.; Jump, D.B.; Morgun, A.; Shulzhenko, N. Role of gut microbiota in type 2 diabetes pathophysiology. *EBioMedicine* **2020**, *51*, 102590. [[CrossRef](#)]
35. Wang, J.; Li, W.; Wang, C.; Wang, L.; He, T.; Hu, H.; Song, J.; Cui, C.; Qiao, J.; Qing, L.; et al. Enterotype *Bacteroides* Is Associated with a High Risk in Patients with Diabetes: A Pilot Study. *J. Diabetes Res.* **2020**, *2020*, 1–11. [[CrossRef](#)]
36. Alhinai, E.A.; Walton, G.E.; Commane, D.M. The Role of the Gut Microbiota in Colorectal Cancer Causation. *Int. J. Mol. Sci.* **2019**, *20*, 5295. [[CrossRef](#)]
37. Bao, Y.; Tang, J.; Qian, Y.; Sun, T.; Chen, H.; Chen, Z.; Sun, D.; Zhong, M.; Chen, H.; Hong, J.; et al. Long noncoding RNA BFAL1 mediates enterotoxigenic *Bacteroides fragilis*-related carcinogenesis in colorectal cancer via the RHEB/mTOR pathway. *Cell Death Dis.* **2019**, *10*, 1–14. [[CrossRef](#)]
38. Hwang, S.; Lee, C.G.; Jo, M.; Park, C.O.; Gwon, S.-Y.; Hwang, S.; Yi, H.C.; Lee, S.-Y.; Eom, Y.-B.; Karim, B.; et al. Enterotoxigenic *Bacteroides fragilis* infection exacerbates tumorigenesis in AOM/DSS mouse model. *Int. J. Med. Sci.* **2020**, *17*, 145–152. [[CrossRef](#)]
39. Gil-Cruz, C.; Perez-Shibayama, C.; De Martin, A.; Ronchi, F.; Van Der Borght, K.; Niederer, R.; Onder, L.; Lütge, M.; Novkovic, M.; Nindl, V.; et al. Microbiota-derived peptide mimics drive lethal inflammatory cardiomyopathy. *Science* **2019**, *366*, 881–886. [[CrossRef](#)]

40. Sun, Y.; Chen, Q.; Lin, P.; Xu, R.; He, D.; Ji, W.; Bian, Y.; Shen, Y.; Li, Q.; Liu, C.; et al. Characteristics of Gut Microbiota in Patients With Rheumatoid Arthritis in Shanghai, China. *Front. Cell. Infect. Microbiol.* **2019**, *9*, 369. [[CrossRef](#)]
41. Fernández-Tomé, S.; Marin, A.C.; Moreno, L.O.; Baldan-Martin, M.; Mora-Gutiérrez, I.; Lanas-Gimeno, A.; Moreno-Monteagudo, J.A.; Santander, C.; Sánchez, B.; Chaparro, M.; et al. Immunomodulatory Effect of Gut Microbiota-Derived Bioactive Peptides on Human Immune System from Healthy Controls and Patients with Inflammatory Bowel Disease. *Nutrients* **2019**, *11*, 2605. [[CrossRef](#)]
42. Lin, C.-H.; Chen, C.-C.; Chiang, H.-L.; Liou, J.-M.; Chang, C.-M.; Lu, T.-P.; Chuang, E.Y.; Tai, Y.-C.; Cheng, C.; Lin, H.-Y.; et al. Altered gut microbiota and inflammatory cytokine responses in patients with Parkinson's disease. *J. Neuroinflamm.* **2019**, *16*, 1–9. [[CrossRef](#)] [[PubMed](#)]
43. Viitasalo, L.; Kurppa, K.; Ashorn, M.; Saavalainen, P.; Huhtala, H.; Ashorn, S.; Mäki, M.; Ilus, T.; Kaukinen, K.; Iltanen, S. Microbial Biomarkers in Patients with Nonresponsive Celiac Disease. *Dig. Dis. Sci.* **2018**, *63*, 3434–3441. [[CrossRef](#)] [[PubMed](#)]
44. Zhao, Y.; Lukiw, W.J. Microbiome-Mediated Upregulation of MicroRNA-146a in Sporadic Alzheimer's Disease. *Front. Neurol.* **2018**, *9*, 145. [[CrossRef](#)]
45. Larsen, J.M. The immune response to Prevotellabacteria in chronic inflammatory disease. *Immunology* **2017**, *151*, 363–374. [[CrossRef](#)] [[PubMed](#)]
46. Yeoh, Y.K.; Chan, M.H.; Chen, Z.; Lam, E.W.H.; Wong, P.Y.; Ngai, C.M.; Chan, P.K.S.; Hui, M. The human oral cavity microbiota composition during acute tonsillitis: A cross-sectional survey. *BMC Oral Health* **2019**, *19*, 1–9. [[CrossRef](#)]
47. Dong, T.S.; Katzka, W.; Lagishetty, V.; Luu, K.; Hauer, M.; Pisegna, J.; Jacobs, J.P. A Microbial Signature Identifies Advanced Fibrosis in Patients with Chronic Liver Disease Mainly Due to NAFLD. *Sci. Rep.* **2020**, *10*, 1–10. [[CrossRef](#)]
48. Fu, B.C.; Hullar, M.A.J.; Randolph, T.W.; Franke, A.A.; Monroe, K.R.; Cheng, I.; Wilkens, L.R.; Shepherd, J.A.; Madeleine, M.M.; Le Marchand, L.; et al. Associations of plasma trimethylamine N-oxide, choline, carnitine, and betaine with inflammatory and cardiometabolic risk biomarkers and the fecal microbiome in the Multiethnic Cohort Adiposity Phenotype Study. *Am. J. Clin. Nutr.* **2020**, *111*, 1226–1234. [[CrossRef](#)] [[PubMed](#)]
49. Lopes, M.P.; Cruz, Á.A.; Xavier, M.T.; Stöcker, A.; Carvalho-Filho, P.; Miranda, P.M.; Meyer, R.J.; Soledade, K.R.; Gomes-Filho, I.S.; Trindade, S.C. Prevotella intermedia and periodontitis are associated with severe asthma. *J. Periodontol.* **2020**, *91*, 46–54. [[CrossRef](#)]
50. Human Development Report 2019, Yearly Human Development Reports UNDP. Available online: <http://hdr.undp.org/en/content/2019-human-development-index-ranking> (accessed on 1 July 2020).
51. Healthy Life Expectancy (HALE) Data by WHO Region. Available online: <https://apps.who.int/gho/data/view.main.HALEXREGv?lang=en> (accessed on 1 July 2020).